

# **PUBLIC HEALTH & SAFETY BOND**

**Presented to the Fire Commission**

**May 11, 2016**





# Public Health & Safety Bond Overview

*The bond will fund capital improvements to City facilities to meet critical health and safety needs in San Francisco.*

**\$350 million to fund 5 projects, including:**

## **Project List**

- Seismic Improvement to San Francisco General Hospital, \$222 million
- Southeast Health Center Expansion, \$30 million
- **Fire Department San Francisco Fire Department Ambulance Deployment Facility and Neighborhood Fire Stations \$58 million**
- Community Health Centers, \$20 million
- Homeless Services sites, \$20 million





# Public Health & Safety Bond SFFD Funding



Ambulance Deployment Center

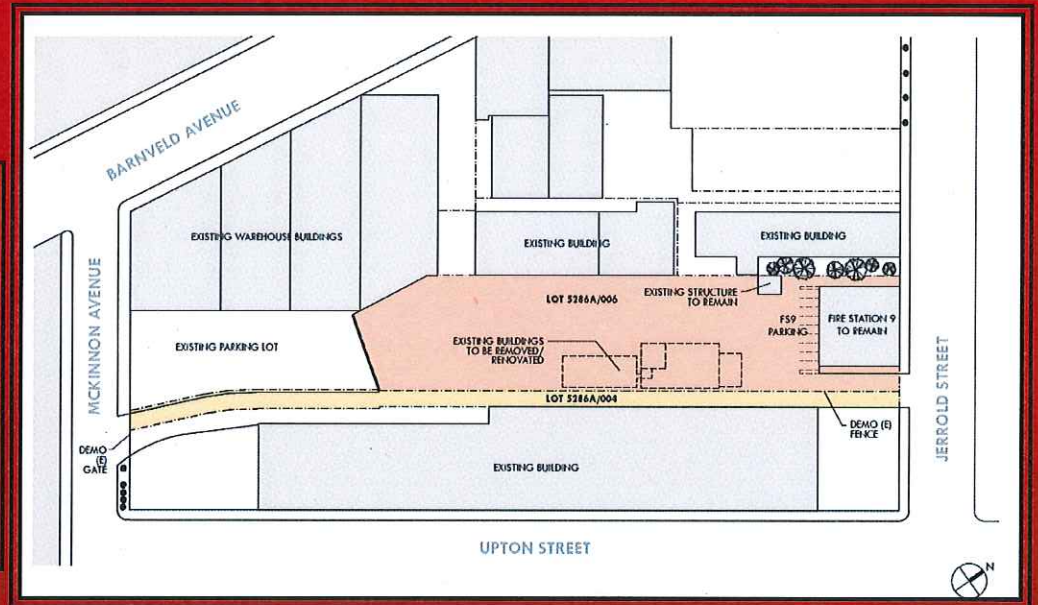
\$44M

Neighborhood Fire Stations

\$14M

**Total Fire Department Bond Funds**

**\$58M**







# Public Health & Safety Bond Current Ambulance Deployment Center

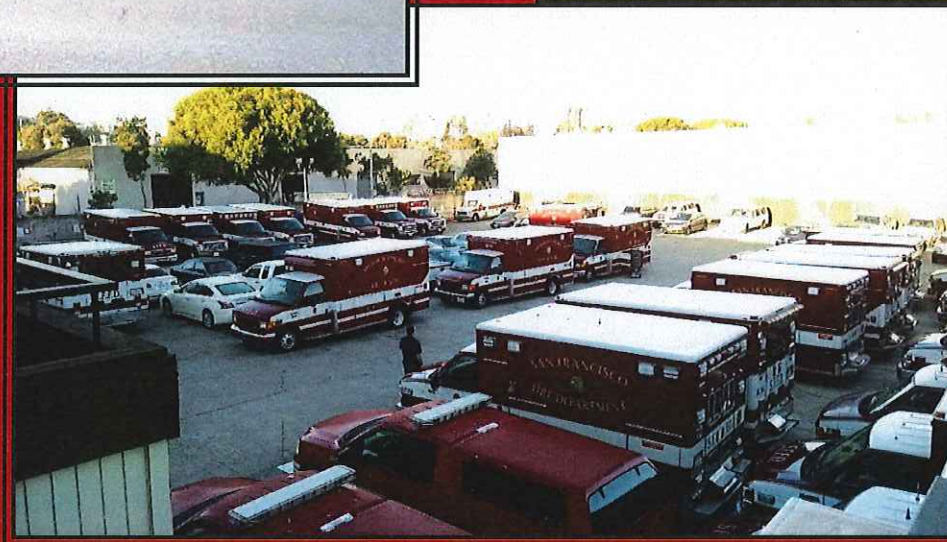


## 2015 stats:

- ~100,000 medical calls per year
- ~50,000 transports a year
- Dynamically deployed

## Current EMS Facilities:

- No indoor restocking bays
- Not an seismically safe essential facility
- Limited employee facilities
- Limited storage space
- Limited training space







# Public Health & Safety Bond Current Ambulance Deployment Center



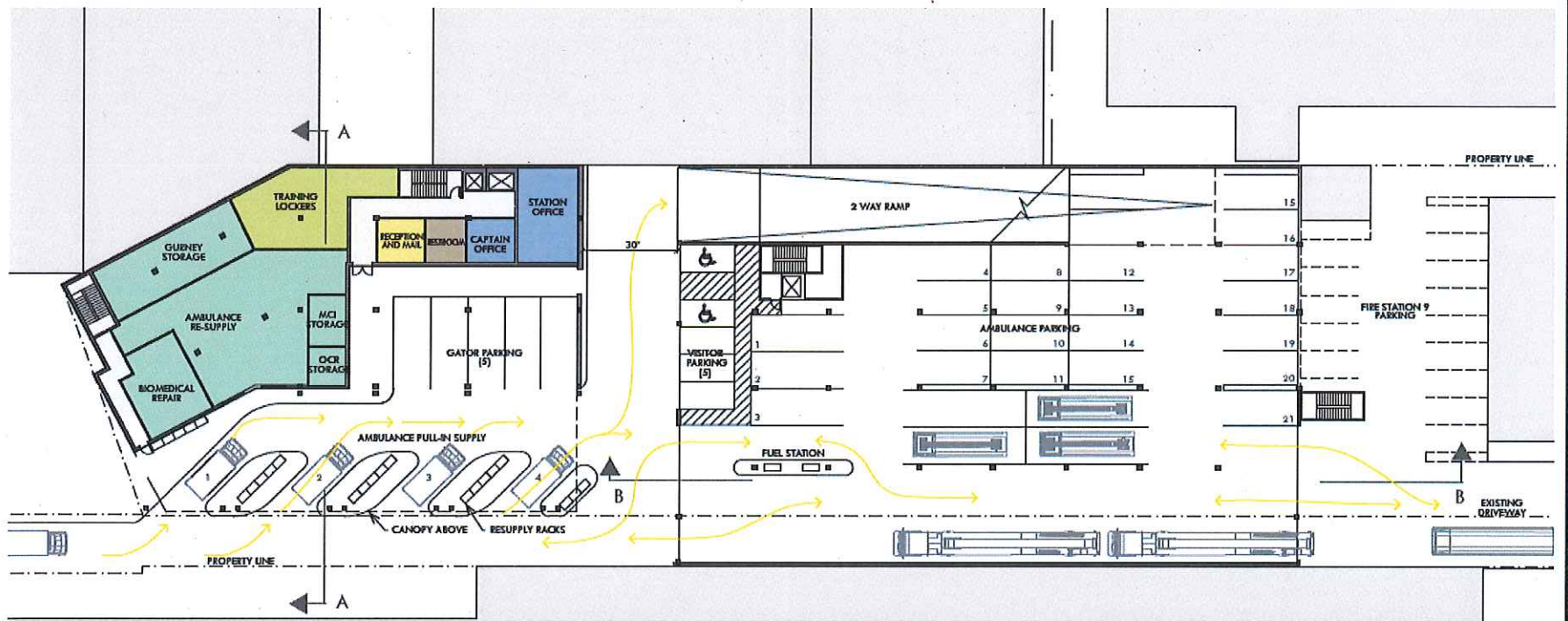
1st Floor	8,250
2nd Floor	11,250
3rd Floor	10,830
<b>Gross Sq Ft Building Total</b>	<b>30,330</b>





# Public Health & Safety Bond Proposed 1<sup>st</sup> Floor Plan

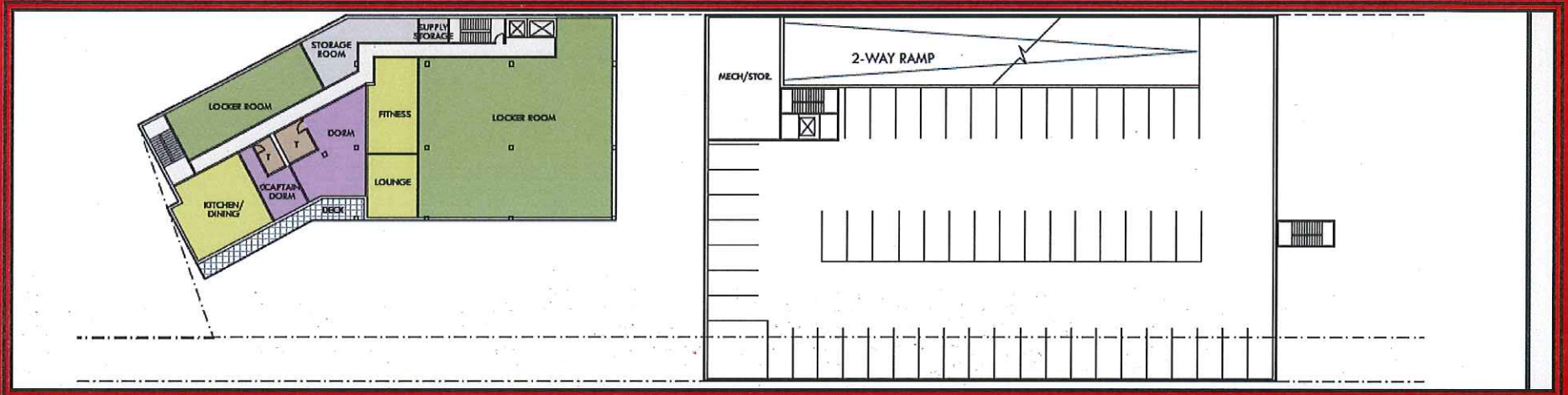
1ST FLOOR PLAN







# Public Health & Safety Bond Proposed 2nd Floor Plan







# Public Health & Safety Bond Proposed 3rd Floor Plan

