



***SAN FRANCISCO  
FIRE DEPARTMENT  
AIRPORT DIVISION***



*Chief of Department  
Joanne Hayes-White*

*Airport Director  
Ivar Satero*



San Francisco  
International  
Airport



# *San Francisco International Airport Then...*



*... And now*



*San Francisco International Airport is  
a Index “E” Facility*

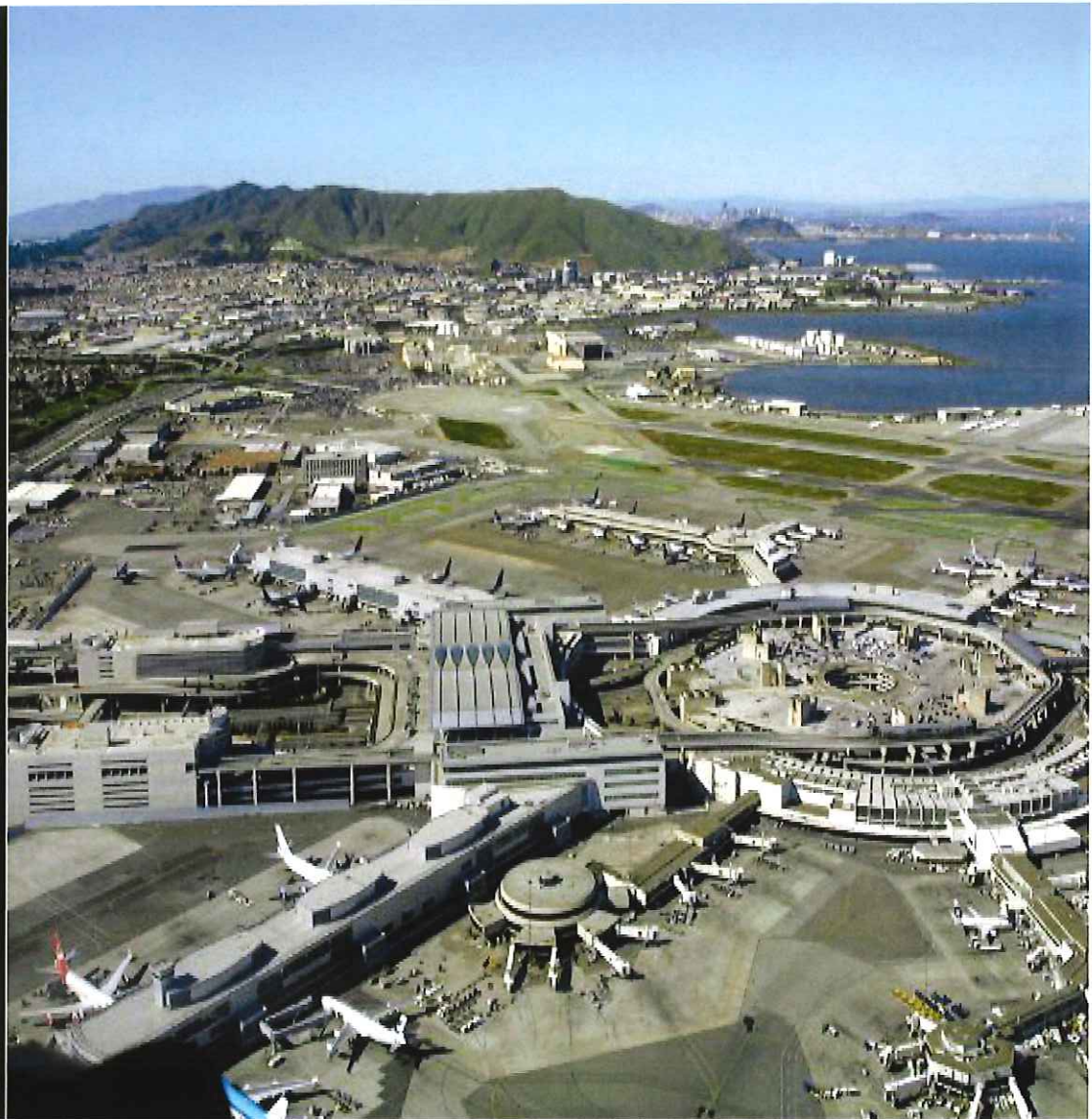


## *Airports are classified by an index, the index is determined by the following:*

- *The FAA Calculates the ARFF index by considering the length of the aircraft and the average daily departures of aircraft.*
- *There are 5 possible index classifications, A-E index. SFO is an Index E facility.*
- *The number of firefighting equipment required is determined by the index classification.*
- *Index E is given to airports that service aircraft 200' or longer and have 5 or more daily departures of that aircraft.*
- *Index E airports require 3 firefighting vehicles that together can discharge 6000 gallons of water , AFFF capabilities (Aqueous Film Forming Foam) a turret discharge rate of at least 600 gallons per minute. Dry Chemical , halon 1211 clean agent.*
- *SFFD airport division is equipped with 4 Osh Kosh Striker 4500 firefighting apparatus, 2 type 3 structure engines 1000 gallon tank capacity , 1 100' aerial platform truck, 2 medical apparatus, 2 MCU apparatus.*

# *San Francisco International Airport 2014 Statistics*

- *Second busiest airport in California*
- *Seventh busiest in the United States*
- *21 busiest in the world*
- *Over <sup>45</sup>22 million passengers*
- *Three domestic terminals*
- *One international terminal*
- *Over 20,000 employees*
- *Over 300 structures*



# *Statistics Continued*

- *Four runways*
- *28R/10L            11,870'*
- *28L/10R            10,600'*
- *01R/19L            8,409'*
- *01L/19R            7,001'*
- *All runways 200' wide*





# *Airport Staffing*

- *1 Assistant Deputy Chief (Days)*
- *1 Battalion Chief – Training (Days)*
- *1 Battalion Chief*
- *1 Captain*
- *3 Lieutenants*
- *16 Firefighters*
- *3 Medics*
- *24 Total working 24 hour shift*

# *Osh Kosh Striker 4500*

- *All Wheel Drive*
- *4500 Gallons Water*
- *630 Gallons AFFF Foam*
- *500 lbs. Dry Chemical*
- *460 lbs. Halon (Clean Agent)*
- *HRET – High Reach Extendable Turret*



# *Additional Firefighting Apparatus*

*Rescue 33 1000 Gal Type 3  
Engine*



*Rescue 47 100'  
Platform Aerial Truck*



***\*NEW APPARATUS\****  
***MOBILE COMMAND VEHICLE***  
**M-211**



***2 Mass Causality Units (MCU)  
"Rescue 81 & 83"***

***Stores medical equipment to provide for 500 patients***



# *767 training aircraft*



# *Mobil Medic Bike Program*

- *5 trained mobile bike medics*
- *Equipped with AED and all ALS medical equipment*
- *In service for high volume passenger travel days*
- *Has impacted response times dramatically*



*New underground hydrant system will expedite the refilling of apparatus without returning to the station to refill*

- *System will be underground and will not impede runway operations.*
- *Under ground hydrants will be located strategically at Taxiways Charlie, Foxtrot and Lima.*





# *Training Airport Rescue Firefighters \*ARFF\**

- *All current ARFF have gone through a new 40 hour curriculum*
- *All new ARFF training has increased from an 8 hour curriculum to the new 40 hour curriculum*
- *SFFD Assistant Chiefs and Battalion Chiefs as well as SMCC will go through a special ARFF command course*
- *ARFF members must recertify every year*



*City Units respond to “Boxes”  
ARFF units respond to “Alerts” (Warnings)*

- **Alert 1** - *Pilot reports minor mechanical problem, stations open apparatus doors, apparatus position on the apron, stand by.*
- **Alert 2** - *Pilot reports indicator lights show smoke, hydraulics, possible stuck landing gear. Units stage at pre-designated locations on AOA.*
- **Alert 3** - *Pilot indicates engines have failed, navigational failure, smoke/fire on board. Heavy landing is imminent. Units stage at pre-designated locations 101 (SFFD) & 303 (San Mateo County) response is struck.*

2015 TOTAL EVENTS TOTAL EVENTS

**CAD EVENTS BY AGENCY**

AGENCY	JAN	FEB	MAR	APR	MAY	JUN	JUL	AUG	SEP	OCT	NOV	DEC	2015
AVSEC	6,264	5,841	6,239	6,604	6,329	6,994	6,604	7,666	7,378	8,512	7,386	6,967	82,784
COMM	85	77	109	139	152	158	139	241	183	153	174	161	1,771
SFFD	334	331	362	356	396	442	356	444	349	367	345	410	4,492
SFOADM	1,101	1,205	1,256	1,277	1,347	1,579	1,277	1,691	1,399	1,479	1,412	1,530	16,553
SFOMAINT	2,678	2,461	2,695	2,626	2,496	2,839	2,623	3,972	2,786	2,871	2,782	2,850	33,679
SFOOPS	3,738	3,486	3,771	4,173	3,881	4,186	4,173	5,146	4,679	4,892	5,189	4,666	51,980
SFPD	12,706	10,969	13,978	16,438	15,546	14,978	16,435	16,984	15,698	16,342	15,793	14,667	180,534
TOTALS	26,906	24,370	28,410	31,613	30,147	31,176	31,607	36,144	32,472	34,616	33,081	31,251	371,793

**LENEL/MDI ALARMS BY TYPE**

TYPE	JAN	FEB	MAR	APR	MAY	JUN	JUL	AUG	SEP	OCT	NOV	DEC	2015
BURGLARY	92	81	148	156	139	203	165	133	151	562	87	103	2,020
DOOR PROP	1,166	1,190	1,233	1,294	1,170	1,106	1,318	1,507	1,297	1,464	1,265	1272	15,282
INTRUSION	1,258	1,191	1,551	1,663	1,209	1,357	1,669	1,941	1,955	2,307	2,960	2,069	21,130
PROTECTION	788	637	585	826	883	1,248	1,491	1,230	954	1,001	902	1035	11,580
TOTALS	3,304	3,099	3,517	3,939	3,401	3,914	4,643	4,811	4,357	5,334	5,214	4,479	50,012

**REQUESTED EVENTS BY TYPE**

EVENT	JAN	FEB	MAR	APR	MAY	JUN	JUL	AUG	SEP	OCT	NOV	DEC	2015
ALERT1	2	-	1	-	1	-	-	2	1	-	1	-	8
ALERT2	5	5	6	5	2	8	7	6	6	6	5	4	65
ALERT3	-	-	-	-	-	1	-	-	-	-	-	-	1
CODE 10	3	1	3	-	5	5	8	6	3	1	11	5	51
CODE 9	104	121	117	126	122	154	160	162	118	157	163	302	1,806
FIRE /FIRE ALARM	23	11	22	30	27	29	44	41	45	35	28	37	372
HAZMAT	-	-	-	-	-	-	-	-	-	-	-	-	-
MEDICAL	245	233	255	261	304	335	294	326	229	267	252	317	3,318
TOTALS	382	371	404	422	461	532	513	543	402	466	460	665	5,621

**EVENTS AT AIRTRAIN FACILITIES**

EVENT	JAN	FEB	MAR	APR	MAY	JUN	JUL	AUG	SEP	OCT	NOV	DEC	2015
DRILL	-	-	-	-	1	-	-	-	-	-	-	-	1
ELEV RESCUE	-	-	-	2	-	-	1	-	-	-	2	-	5
FIRE	-	-	-	-	-	1	-	-	-	-	1	1	3
FIRE ALARMS	1	-	-	2	-	-	-	-	1	-	-	-	4
GAS INV	-	-	-	-	-	-	-	-	-	-	-	-	-
MEDICAL	2	-	2	-	-	1	2	1	1	1	1	-	11
ODORINV	1	-	-	-	-	-	-	-	-	-	-	-	1
RESCUE	-	-	-	-	-	-	-	-	-	1	-	-	1
SERVICE CALL	-	-	-	-	-	-	-	-	-	-	-	-	-
SMOKE INV	-	-	-	-	-	-	-	-	-	-	-	-	-
SUSP SUBSTANCE	-	-	-	-	-	-	-	-	-	-	-	-	-
TOTALS	4	-	2	4	1	2	3	1	2	2	4	1	26

# *Incident Command Structure*

EOC Emergency Operations Center	Incident Commander AC Deputy IC (BC)	Medical Group Supervisor MGS
Assistant Deputy Chief	Operations BC	Triage Treatment Transportation
Battalion Chief	Fire Attack	Landing Zone Manager LZ
	Rescue Group	
	Evacuation Group	
	Safety Officer BC	
	Staging Officer BC	

*The vast majority of the flight departures and arrivals will operate over bay waters. ARFF responders must be prepared for a marine disaster response*



Copyright ©Herb Lingl/aerialarchives.com

***\*MERF\****

***Marine Emergency Response Facility***



# *Airport Division Marine Apparatus*

**Boston Whaler  
Rescue 99**



**Moose Boat  
Rescue 55**



*SFO marine resources*  
*PWC, Air boat , Zodiac fast boat*





***FUTURE HOME OF THE NEW STATION 3  
Move in January 2017***





PROPOSED PHASE 2 ELEVATION - LOUVER (CHAMPAGNE PEARL), MULTI-ANGLE ORIENTATION (9°, 35° & 65°)