



CONSTRUCTION UPDATES

SUPPORT SERVICES

MARCH 2021—ADC DAWN DEWITT



# STATION 49 – AMBULANCE DEPLOYMENT FACILITY PROGRESS REPORT



- 2016 Health & Safety Bond
- Currently doing “punch-list” walk-throughs (home stretch)
- Final Completion 4/26/2021
- Anticipated move-in early June 2021
- Delays
  - Covid-19: supply chain interruptions; availability of subcontractor labor
  - PG&E/PUC: Covid-19, labor, etc.
- Even with delays, project **still on Budget!**





STATION 49

Construction Progress—View from Jerrold Street



Erection of Steel Canopy – September 20, 2019







# STATION 49

## Construction Progress—Jerrold Yard



Ambulance Parking with Cord Reels





# STATION 49

## Construction Progress—Parking Structure







# STATION 49

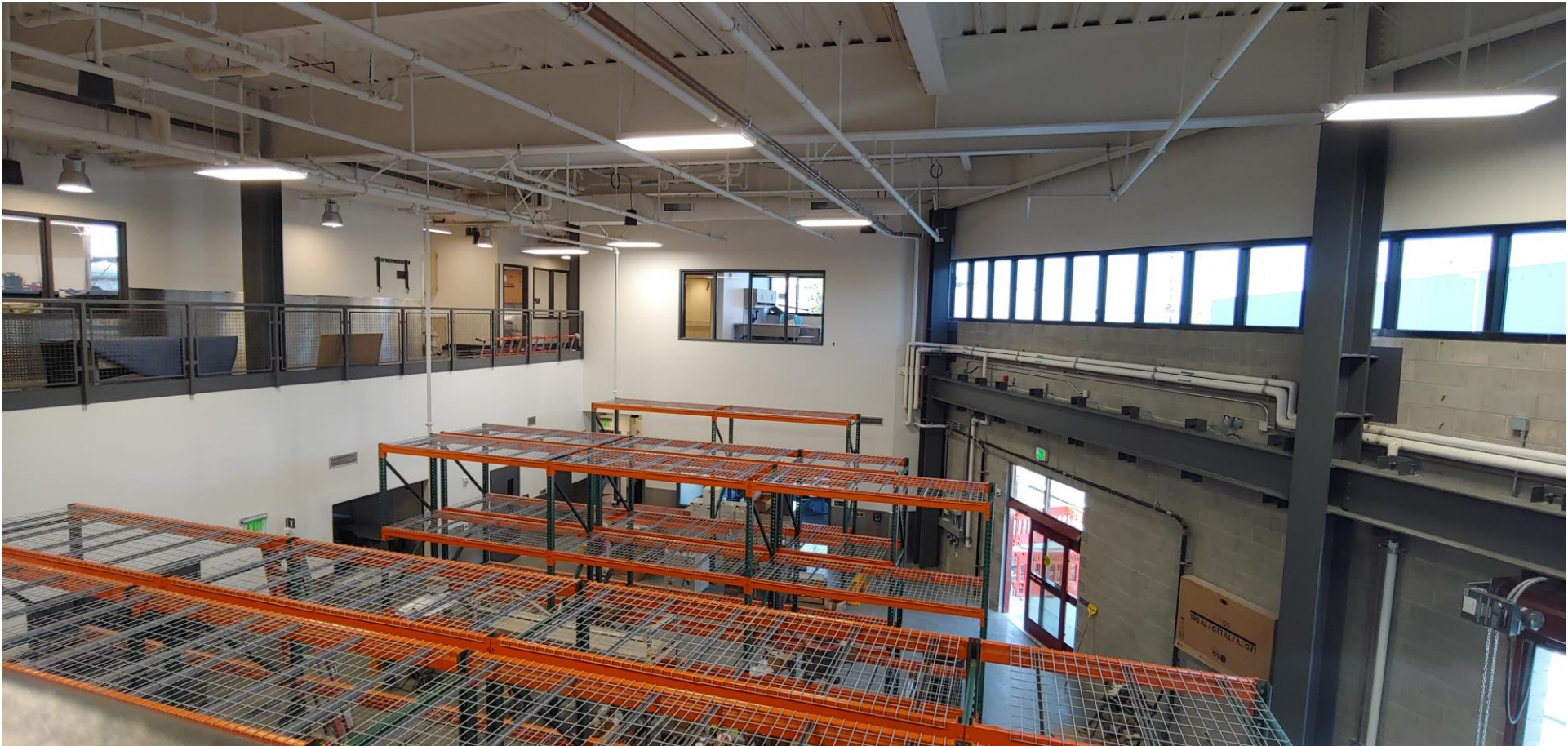
## Construction Progress—Parking Garage





# STATION 49

## Construction Progress—1st Floor



Warehouse with view of 2nd floor catwalk





# STATION 49

## Construction Progress—1st Floor



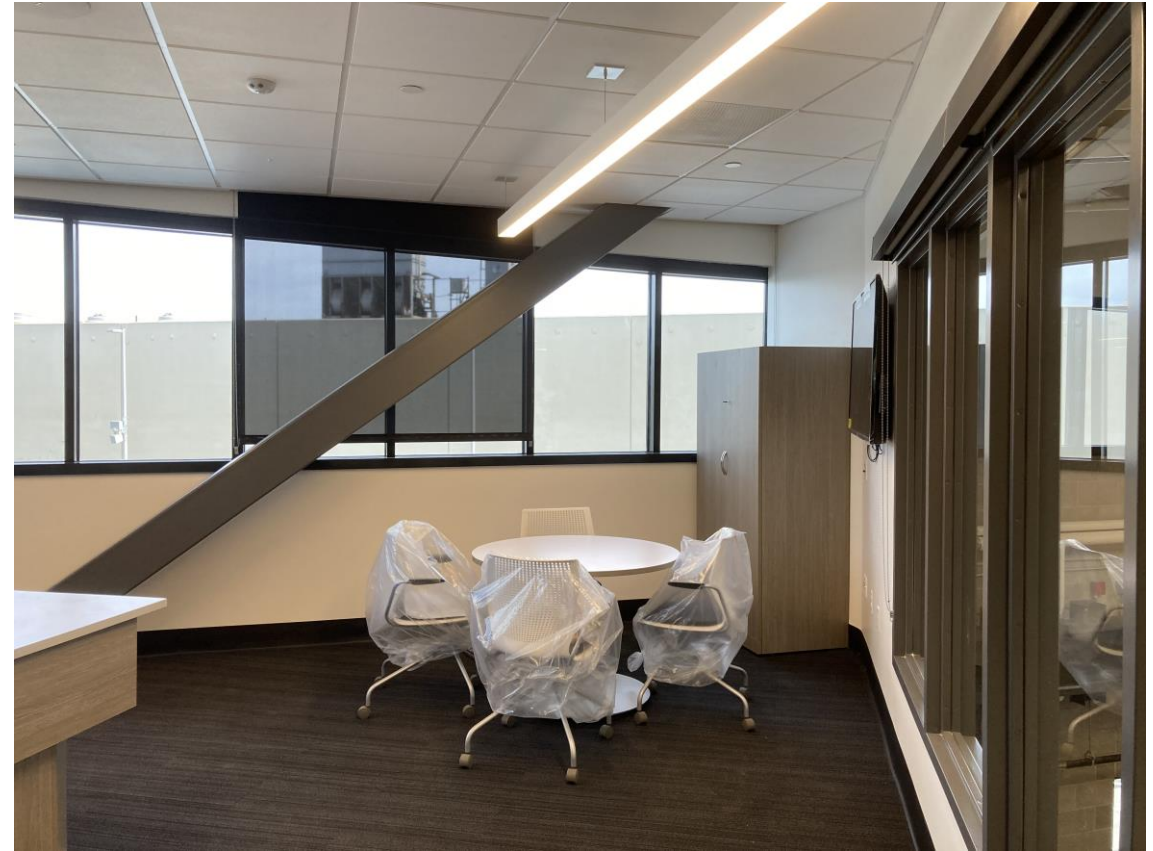
Rescue Captains' Office





# STATION 49

## Construction Progress—2nd Floor



EMS I's Office



# STATION 49

## Construction Progress—2nd Floor



EMS 2's Office



BioMedical Room





# STATION 49

## Construction Progress—3rd Floor



Break Room and Kitchen Area



# STATION 49

## Construction Progress—3rd Floor



Locker Room





# STATION 49

## Construction Progress—3rd Floor



Exercise Room



# STATION 49

## Construction Progress—4th Floor



4<sup>th</sup> Floor Open Space  
and Office





# STATION 49

## Construction Progress—4th Floor



Open Office



# STATION 49

## Construction Progress—4th Floor



Conference Room





# STATION 49

## Construction Progress—4th Floor



Training Room



# STATION 49

## Construction Progress—Roof

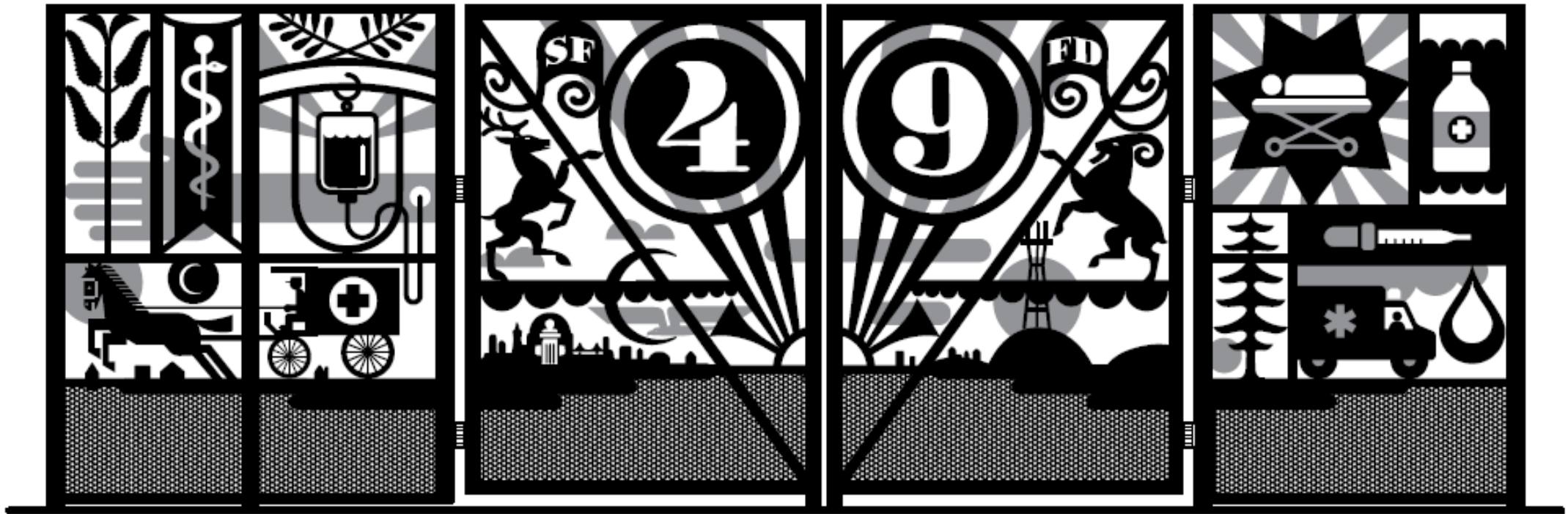


Solar Panels on Roof





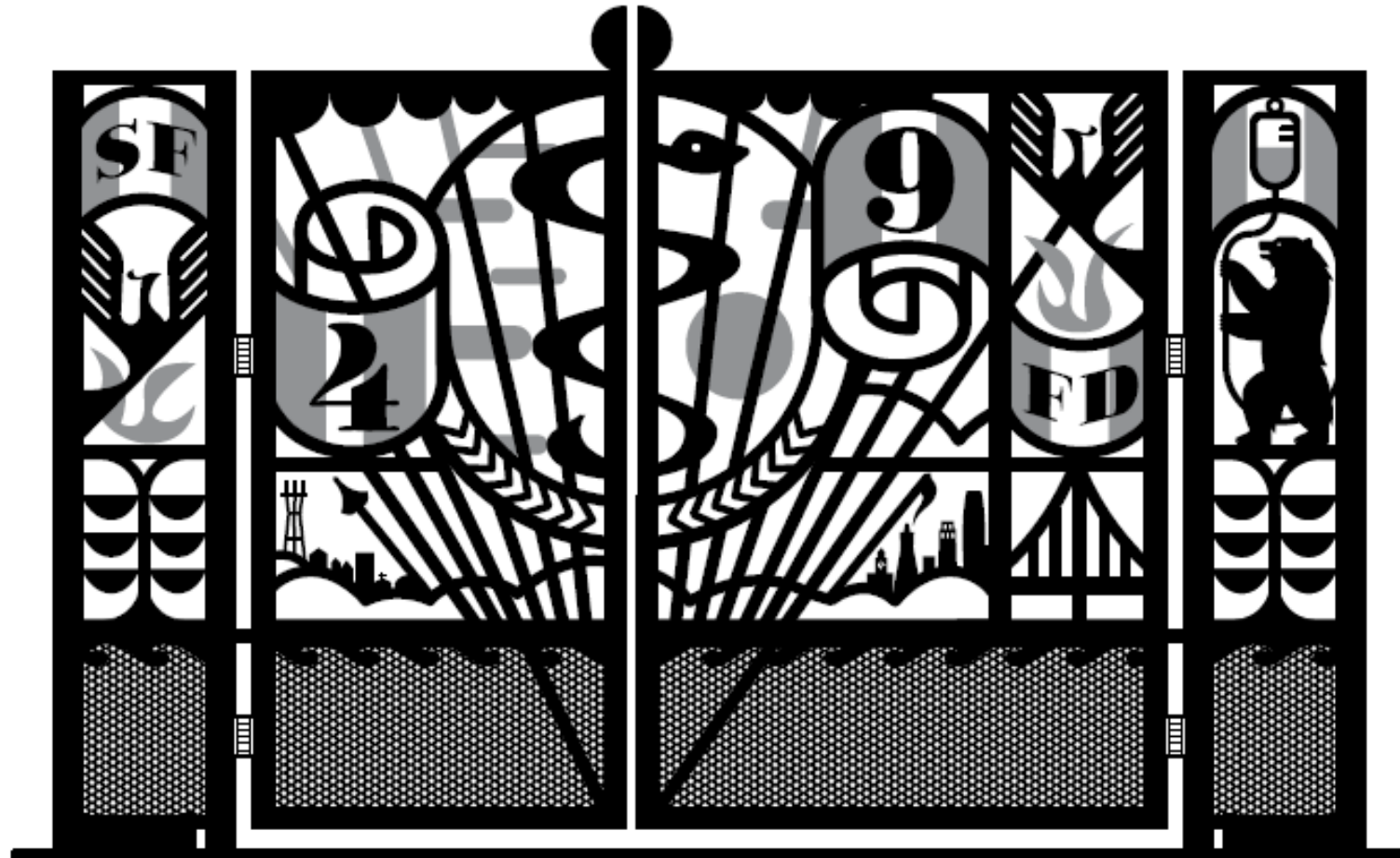
STATION 49  
Entrance Gate from Jerrold



Artist: Michael Bartalos



STATION 49  
Exit Gate to McKinnon





# STATION 35



- ESER 2014 Bond
- Final Completion Summer 2021
  - Awaiting electrical and water hook-ups (close coordination with PG&E/PUC)
- Project Delays / Challenges
  - Unique project—built on water; oversight & approvals from Bay Conservation & Development Commission
  - PG&E/PUC = Electrical point of connection changed to expedite & save money
- Budget Revisions: Trump Administration steel tariffs, steel cost escalation; BCDC-imposed mitigation measures

# STATION 35

## Construction Progress—View from Embarcadero





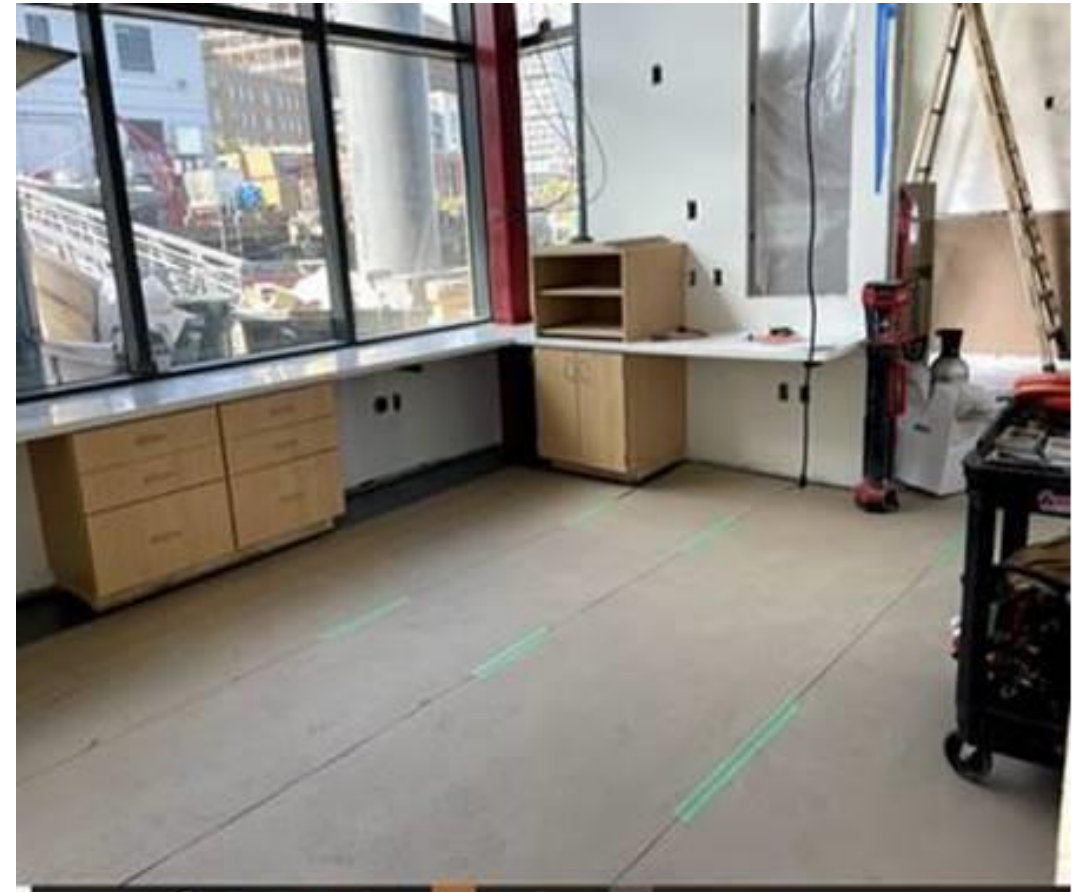
# STATION 35

## Construction Progress—Approach to Station



# STATION 35

## Construction Progress—1st Floor



Day/Night Watch Room



# STATION 35

## Construction Progress—1<sup>st</sup> Floor



Boson's Bay

# STATION 35

## Construction Progress—1st Floor



Work Room



# STATION 35

## Construction Progress—2nd Floor



Kitchen and Day Room

# STATION 35

## Construction Progress—2<sup>nd</sup> Floor



Officer's Quarters



# STATION 35

## Construction Progress—2nd Floor



Men's Lockers / Restroom

# STATION 35

## Construction Progress—2<sup>nd</sup> Floor



Dorm



THANK YOU

