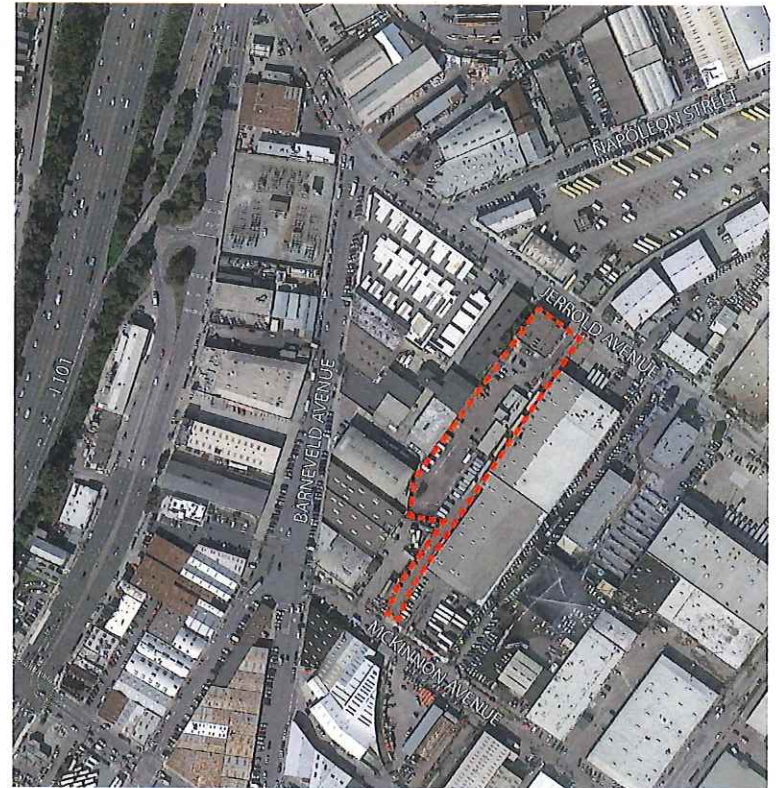


Ambulance Deployment Facility



Project Site: 2245 Jerrold Ave



Building Design & Construction

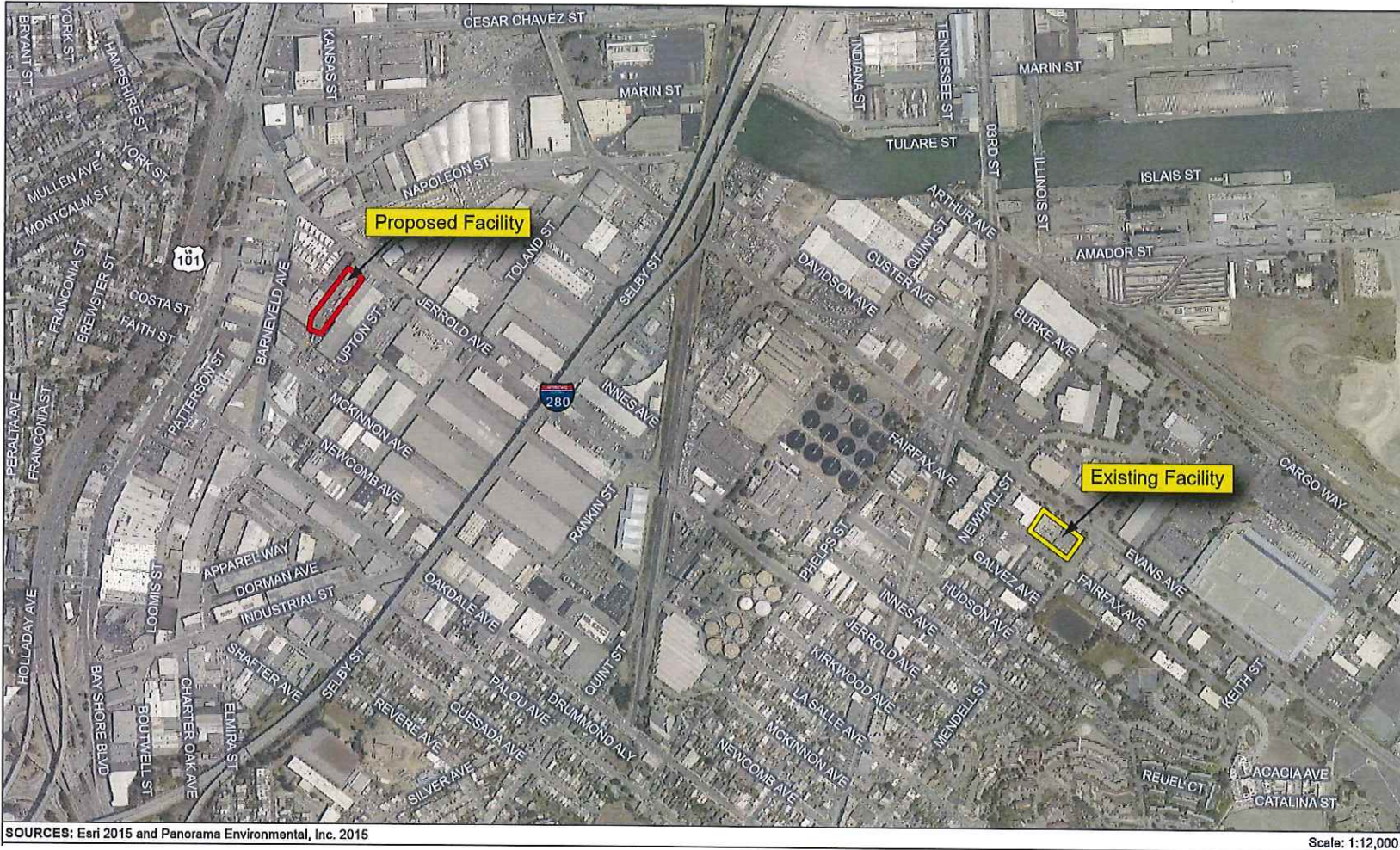


Fire Department

Ambulance Deployment Facility

Fire Commission Presentation | Schematic Design | Sept 15, 2016

Proposed & Existing Facility Locations



Building Design & Construction

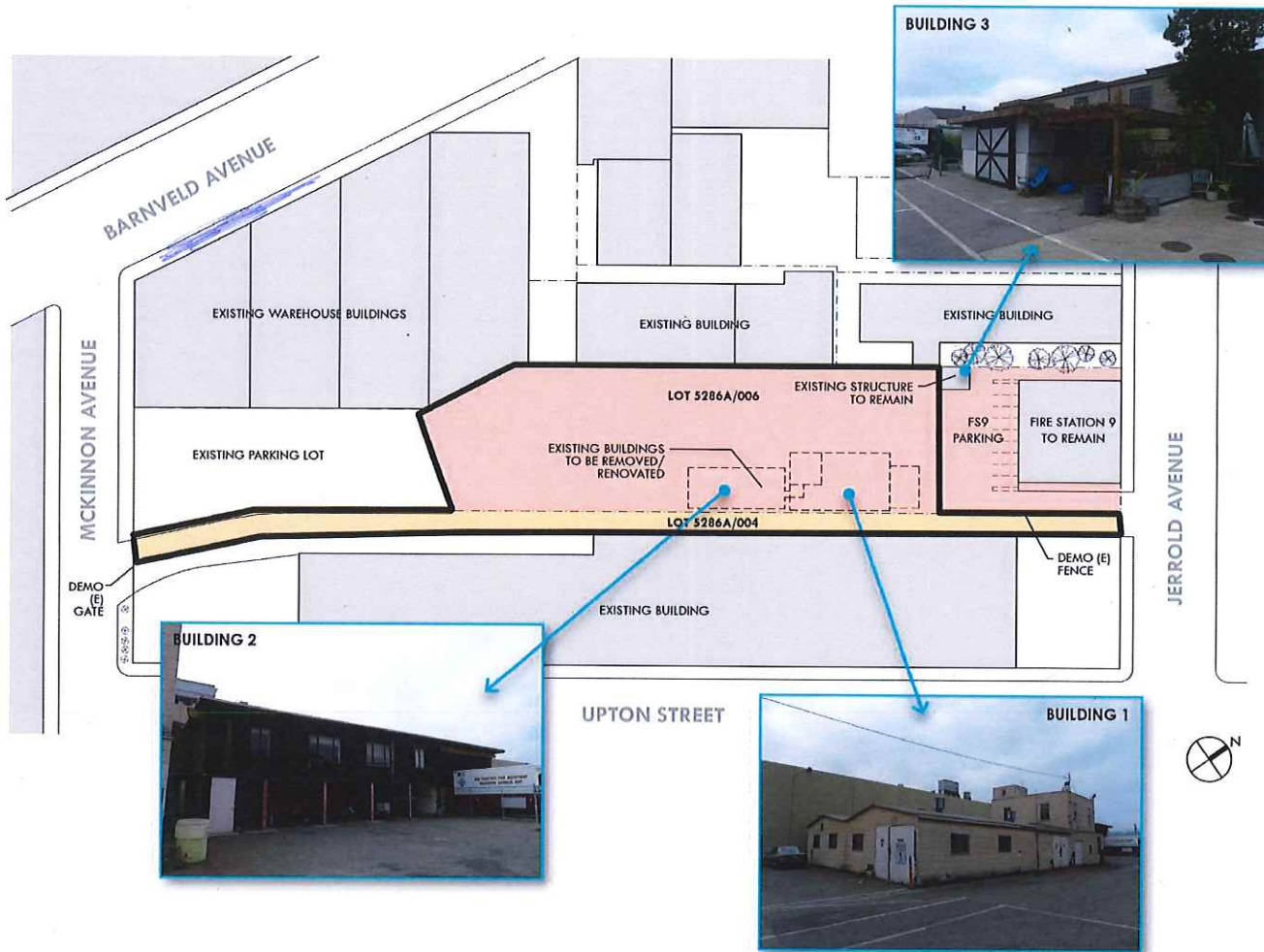


Fire Department

Ambulance Deployment Facility

Fire Commission Presentation | Schematic Design | Sept 15, 2016

Existing Site Plan and Photos



Building Component Program

SUBTOTAL EMS WAREHOUSE					5,080	
5.0 EMS OFFICE						
5.01	Command Staff Office (ADC EMS)	200	1	200		Includes (1) Murphy bed, (4) 30"W x 24"D dressing lockers. (1) desk, (2) chair w/ (1) small table.
5.02	Section Chief Office (Operations)	200	1	200		Full-height shelves; cabinets; (1) Murphy bed
5.03	Command Staff Bathroom	80	1	80		Bathroom located immediately adjacent to office; (1) shower
5.04	Continuous Quality Improvements (CQI)	450	1	450		(1) 150 SF Office, (3) 8x8 workstation. Open to Circulation is acceptable
5.05	Medical Director	150	1	150		Office (Existing office is 11.5' x 16')
5.06	Medical Records	200	1	200		(2) 8x8 workstation / Storage
5.07	Conference Room	750	1	750		(12)-chair conference table; video and data capability
5.08	Work Room / Copy / Fax / Office Supplies	150	1	150		Work counter; full-height shelves
SUBTOTAL EMS OFFICE				2,180		
6.0 EMS LOCKER ROOM						
6.01	Male Restroom (serves Conference, Office and Reception)	130	1	130		Multi-accommodation; (1) lavatory; (1) urinal; (1) toilet
6.02	Female Restroom (serves Conference, Office and Reception)	130	1	130		Multi-accommodation; (1) lavatory; (2) toilets
6.03	Male / Female Locker Room	4,000	1	4,000		18"W x 24"D dressing lockers. (300) for total number of lockers (240 male & 60 female) sliding door for future adjustments in male/female ratio
6.04	Male / Female Bathroom	1,360	1	1,360		Shared with EMS Training. Adjacent to Locker Rooms. Male: (3) showers, (2) toilets, (1) urinal, (6) sinks. Female: (3) showers, (3) toilets, (6) sinks.
6.05	Janitor Closet	60	3	180		On each floor. Shared with EMS Training. Service sink; mop hook; shelves.



Building Component Program

SFFD EMS - VEHICLES

A	B			C	D	E		F
	Vehicles	Current	Current Approved	Number	Stall Size per Vehicle	2030 Forecast Total Stall Area (SF)	With Min Drive Aisle (50% UON)	Comments
14.0	EMS VEHICLES							
14.01	Ambulance (Total)	41	50	63				
14.02	Ambulance (Min. Deployed)	15	15	15				
14.03	Ambulance (On site)	26	35	52	290	15,080	18,850	min drive aisle is 25% assuming tandem arrangement; stall size 11.5x25
14.04	Ambulance Resupply Spaces (On Site)			4	700	2,800	4,200	50% min drive aisle assuming double loaded; stall size 11.5x25
14.05	Gator	6	6	10	0	0	0	located on Gator trailers
14.06	RC Vehicle	1	1	1	180	180	270	stall size 9x20
14.07	Special Units (oversized)	1	2	3	360	1,080	1,350	stall size 12x30
14.08	Sedans	2	3	5	162	810	1,215	stall size 9x18
14.09	Visitor	5	5	5	162	810	1,215	stall size 9x18
14.10	Employee Personal Veh.	65	0	0	162	0	0	Not provided for in program; stall size 9x18
14.11	Gator Trailer (Each can carry 2 Gators)	0	5	5	360	1,800	2,250	25% drive aisle for tandem condition; stall size 12x30
14.12	Bus Ambulance	0	2	2	576	1,152	1,728	stall size 12x48
	SUBTOTAL AMBULANCES	41	50	63				
	SUBTOTAL OTHER EMS VEHICLES	80	24	31				
	SUBTOTAL EMS VEHICLES	121	74	94		23,712	31,078	

SFFD TRAINING - VEHICLES

A	B			C	D	E		F
2030 Forecast								



Summary Program

A	B	C	D	E	F
STAFFING		CURRENT	APPROVED	2030 FORECAST	COMMENTS
1.0	EMS STAFF	235	237	316	
2.0	TRAINING STAFF	100	100	115	
SUBTOTAL STAFF		335	337	431	

A	B	C	D	E	F
BUILDING COMPONENTS				2030 FORECAST	
			NSF	USF W/ 10% DEPT MARKUP	GSF (W/ 25% GROSSING FACTOR)
4.0	EMS WAREHOUSE		5,080	5,588	6,985
5.0	EMS OFFICE		2,180	2,398	2,998
6.0	EMS LOCKER ROOM		5,800	6,380	7,975
7.0	EMS STAFF SUPPORT		2,455	2,701	3,376
8.0	TRAINING ADMINISTRATION		1,750	1,925	2,406
9.0	CLASSROOMS		6,600	7,260	9,075
10.0	TRAINING STAFF SUPPORT		0	0	0
11.0	TRAINING LOCKER ROOM		1,100	1,210	1,513
12.0	BUILDING SUPPORT		1,390	1,529	1,911
SUBTOTAL BUILDING			26,355	28,991	36,238

A	B	C	D	E	F
VEHICLES		NUMBER OF VEHICLES (2030 FORECAST)	2030 FORECAST		
			Vehicle Stall w/ Minimum Drive Aisle		GSF (W/ 25% GROSSING FACTOR)
13.0	EMS VEHICLES	94	31,078		38,848
14.0	TRAINING VEHICLES	43	17,130		21,413
SUBTOTAL VEHICLES		137			
SUBTOTAL PARKING AREA					60,260



Summary Program

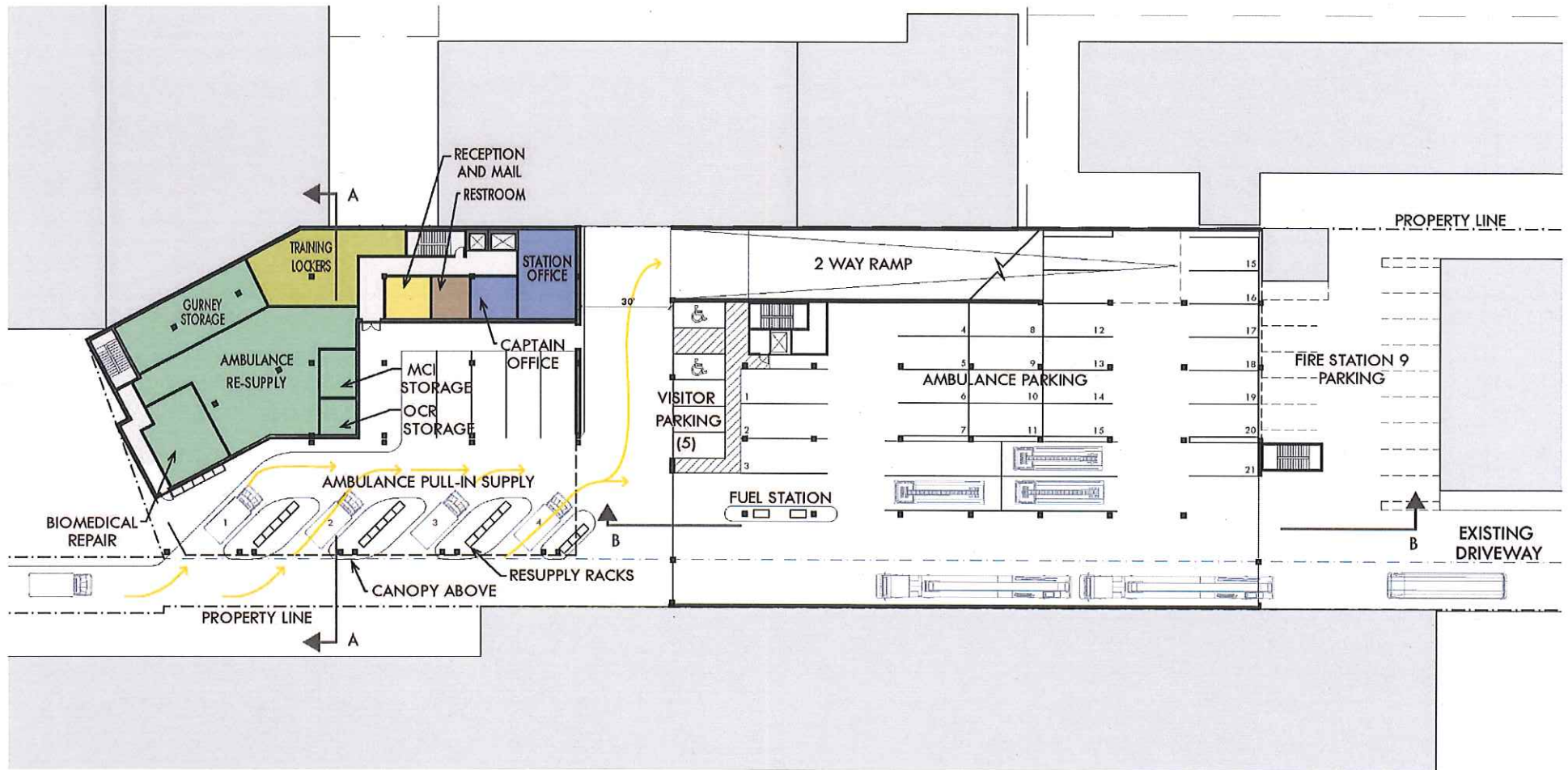
A	B	F
	PROGRAM AREA SUMMARY (2030 FORECAST)	
	SUBTOTAL BUILDING	36,238
	SUBTOTAL PARKING AREA	60,260
	TOTAL PROGRAM AREA	96,498

NOTES

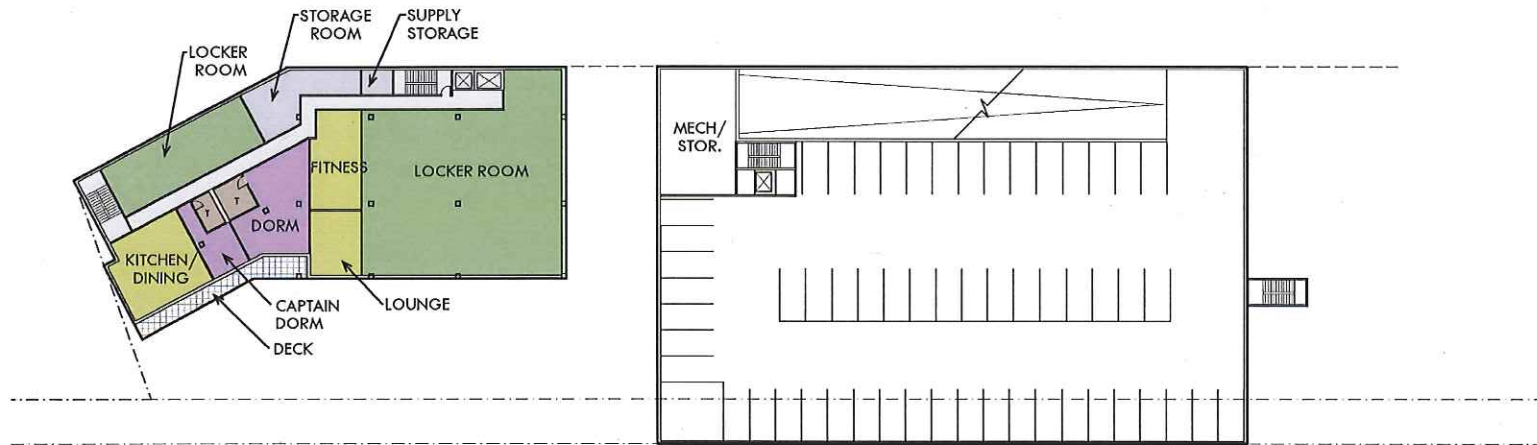
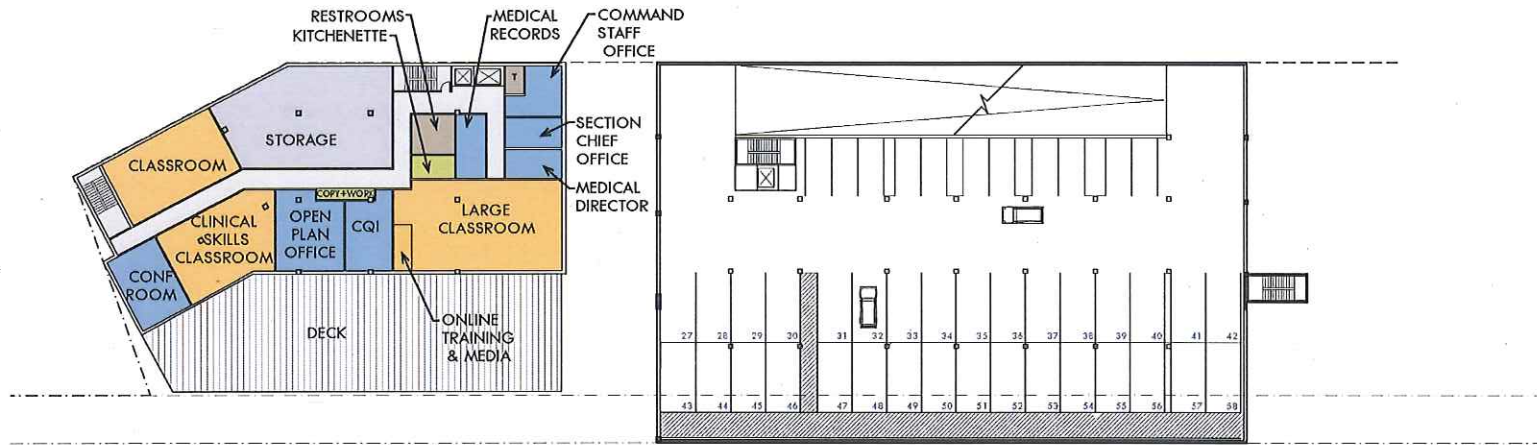
- a Net SF is the occupiable space within a room or space
- b Usable SF includes departmental circulation
- c GSF includes wall thicknesses, structure, mechanical, and horizontal and vertical circulation
- d Grossing factors to be verified after preparing test-fits
- e Gross-up factor for parking reduced from 25% to 20% since most parking does need to be covered. This GSF percentage should be verified for each test fit.



Proposed Layout: First Floor



Proposed Layout: Second and Third Floors



Project Schedule

PHASE	DURATION	2016					2017					2018					2019					2020																		
		A	S	O	N	D	J	F	M	A	M	J	J	A	S	O	N	D	J	F	M	A	M	J	J	A	S	O	N	D	J	F	M	A	M	J	J	A	S	O
Schematic Design	12 wks	■	■																																					
Design Development	14 wks					■	■																																	
Construction Documents	26 wks									■	■	■	■																											
Bid Trade Packages	12 wks																																							
Construction	26 months																	■	■	■	■	■	■	■	■	■	■	■	■	■	■	■	■	■						
Move in	3 months																																							



Building Design & Construction



Fire Department

Ambulance Deployment Facility

Fire Commission Presentation | Schematic Design | Sept 15, 2016