

The background of the slide is the official seal of the United States Coast Guard. It features a central shield with a landscape of mountains and a ship. Above the shield is an eagle with wings spread, perched on a shield. To the left of the shield is a sailor in a hat, and to the right is a sailor in a uniform. The entire seal is surrounded by a laurel wreath.

OPERATIONS UPDATE
APRIL 2022
DEPUTY CHIEF
ROBERT POSTEL



OPERATIONS REPORT

April 1 – April 30, 2022

GREATER ALARMS:

There were three Greater Alarm fires during this reporting period.

2nd Alarm – (4/4/22) 2204 hours, 400 Upper Terrace, cross street Monument Way. There was one injury. This fire is under investigation. (Assistant Chief William Storti)

A Full box was struck for 400 Upper Terrace at 2035 hours with a report of lots of smoke in the building and fire coming from the third floor. Engine 12 was on-scene at 2041 hours and declared a working fire in a four-story, type 5 building. Upper Terrace is a narrow, dead-end street which caused some delay in subsequent units. There were several phone calls and no delay in reporting.

Engine 12 led a large line wye to the fourth floor and put water on the fire and was backed up by Engine 21. Engine 12 also reported a person trapped on a balcony in the rear of the side of the roof with its aerial ladder and proceeded to the roof. Battalion 2 was first the BC on-scene, followed by Battalion 5, who assumed command and sent Battalion 2 inside as fire attack. Truck 6 laddered the Bravo side of the roof with aerial (roof line was not level; Bravo was a story higher than alpha side) and went inside with the fire attack. Rescue 2, with assistance from Engine 24, rescued the two civilians from the rear. Rescue 2 proceeded to perform a primary and secondary search while Engine 24 led a large line over Truck 6's aerial to the roof. Division 2 took over command from Battalion 5 and assigned them to the roof.

Fire attack was not able to make progress because of heavy wind conditions forcing the fire back into the building. The fire extended into the attic and into the bravo apartment. Roof division vented the roof, discovered fire into the attic and into the bravo apartment. Roof division vented the roof, discovered the fire in the attic, and evacuated the roof. A second alarm was struck. Fire attack backed off while Engine 24 cooled the fire from the roof through the skylights. Fire attack then restarted their attack and controlled the fire. Engine 36 and Truck 10 were assigned to the bravo apartment and led a large line wye and pulled ceilings and extinguished the fire in the attic, preventing it from extending any farther. Battalion 6 was assigned to the 5^h floor to look for extensions but found none. Engine 5 was assigned salvage on the second and third floors. Engine 20 was assigned to fire attack and brought another large line to the 4th floor.

Companies performed very well under difficult circumstances. The wind and the remote location of the fire made things difficult. Truck 6 had preplanned that area and was able to get up and find a good spot for an advantageous aerial shot.







3rd Alarm – (4/8/22) 0542 hours, 147 Noe Street, cross street Monument Way. There were no injuries. This fire is under investigation. (Assistant Chief Michael Thompson)

A full box was struck for 147A Noe Street at 0542 hours for a house on fire. Previously, at 0540 hours, an incorrect address was dispatched to a fire in the building at 1478 Noe St. The address was corrected, and units dispatched again. Due to redispach, the first unit on-scene was Truck 6 who declared a working fire (fire between the buildings) at 05:44 hours in a three-story type 5. Even with the improper address being dispatched, units arrived very quickly. Division 2 arrived on scene and assumed Noe Street Command at 05:47 hours.

Engine 6 led a 150-foot ready line into 141 Noe which was showing the most fire at the time. 147 Noe did not appear impacted at this early stage. Engine 6 proceeded to the second floor where they extinguished fire, then on to the third floor where they encountered intense heat and heavy fire. They further reported heavy fire in the attic. Battalion 2 arrived on-scene and was assigned Fire Attack, meeting with Engine 6. Engine 21 supplied Engine 6 and led a 200-foot read line into 147 Noe, now identified as Delta, under the supervision of newly-arrived Battalion 5. Truck 6 laddered the Delta side of the Delta building with a 35-foot extension ladder. Trees, setbacks, and overhead wires left aerial ladders unusable. Given the severe pitch and height of the roof of Delta, and that the fire was venting out of the fire building, Truck 6 sent its entire crew to the roof to gain access to both buildings for ventilation. Rescue 2 assisted Engine 21 and Delta Battalion 5 with search and checking for extension in the Delta building. Engine 24 led a large line wye into the fire building at 141-145 Noe which still showed the majority of fire.

Fire attack made significant progress in extinguishing heavy fire in the fire building on two floors and extending into the attic. At 0554 hours, fire appeared in the attic of the Delta building and a second alarm was struck. As the fire in Delta grew in intensity and fire behavior, a third alarm was struck at 0610 hours. Truck 6 evacuated the Delta roof. At this point, the majority of the fire was in Delta. All companies halted their attack from the front of the building as Engine 24 protected the exterior of the buildings with a deck gun and engine companies deployed a hand line operating off Truck 6's aerial. This was to protect the exterior while a change of tactic was readied: an interior hand line push from the rear of Delta. Once lines were ready, Delta companies commenced their attack from the rear and extinguished, contained, and controlled the fire. Change of watch meant that fresh crews arrived to assist with overhaul and ultimately a fire watch was established and in place until 1342 hours. Five adults were displaced, with two utilizing Red Cross services.

Companies performed very well under difficult circumstances. The height of the building and above ground obstacles proved challenging for Truck companies. The fire itself virtually raced into the Delta changing the interior environment from tenable to IDLH in a few short minutes. Traffic calming measures made it difficult to place apparatuses for their optimum use.





3rd Alarm – (4/18/22) 1130 hours, 301 West Portal Avenue, cross street 14th and 15th avenues. There were no injuries. This fire was determined to be accidental. (Assistant Chief Nicol Juratovac)

Engine 39 arrived and reported a working fire with black smoke showing from the roof. Engine 39 deployed a 150' 1 3/4" pre-connect to the roof ascending via the roofers' ladder. There, they extinguished visible fire. Engine 39 Officer requested a second hose line on the roof to which Engine 19 responded by deploying the 200' 1 3/4" pre-connect. Engine 39 reported that there was fire in the attic. Truck 19 deployed the aerial to the roof and sent all members to the roof to perform vertical ventilation. Battalion 8 arrived and assumed Command. Division 3 arrived and received a transfer of Command from Battalion 8.

Division 3 assumed West Portal Avenue Command. Command noticed heavy brown smoke pushing out from the eaves of the fire building on the Alpha side. Command assigned Battalion 8 as Fire Attack Group Supervisor and immediately re-assigned Engine 19 to descend from the roof and deploy a hose line into 301 West Portal (sushi restaurant). Command then assigned Engine 40 to deploy a hose line into 305 West Portal (cleaners).

Command then noticed that the ceiling in the cleaners at 305 West Portal collapsed. Command announced "Emergency Traffic" per SFFD SOPs and ordered crews to proceed with firefighting operations but to do so with caution. Command then re-assigned Engine 15 RIC to deploy a backup line to Engine 40 in the cleaners. Engine 32 was then assigned as the RIC.

Command struck a 2nd Alarm as fire was now threatening Delta Exposure. Command assigned Engine 18 to the nail salon at 309 West Portal. Command ordered Engine 20 to the realty office on Bravo Division, which was the 14th Avenue side of the fire building (2811 14th Avenue). Command ordered Engine 22 to the sushi restaurant at 301 West Portal upon receiving reports from Engine 19 that a Company was needed to pull ceilings. No additional Truck Company was on the scene at that time.

Command received a report from Truck 19, who was assigned Roof Division, that the roof was going to collapse into the nail salon and that everyone was evacuating the roof. The roof caved in approximately 10 feet from the roof line. According to Roof Division, it looked as though it was going to collapse onto interior crews operating inside. Upon a thorough re-assessment by Safety One (the Director of Training arrived on scene), it was determined that the ceiling had collapsed along with roofing materials and not the roof structural members itself.

OBSTACLES ENCOUNTERED

The Fire Building had four commercial occupancies with four different addresses. Delta Exposure Division had two occupancies with two different addresses. These layouts posed a complex dangerous battleground in addition to its highly combustible materials in each of the commercial units (cleaners and nail salon in the fire building, and upholstery and Post Office in Delta Exposure Division). There were various layers to the ceiling including wire mesh and lath and plaster in addition to sheetrock that was 17 feet in height.

The three occupancies in the fire building featured 17' ceilings that required 18' Baby Extension Ladders, 16' Straight Ladders, and 22' Extension Ladders to direct hose streams into the attic space. Ceilings were constructed of sheet rock over wire mesh and lath and plaster which also posed a challenge. These were also 100' deep buildings with a 2nd floor in the rear that had to be reached with hose lines and hooks.

STRATEGY

Because the fire was reported to be in the common attic upon the arrival of the IC, the strategy was to immediately prevent further fire spread. A hose line was already on the roof, so a hose line was immediately ordered inside the fire unit (sushi restaurant) where the origin of the fire was reported to be and the third hose line stretched to the adjoining downwind unit (cleaners). Another hose line was stretched to both the realty office in Bravo Division and Delta Exposure Division. The goal was to get ceilings opened and put out the fire with hose streams. Every effort was made to prevent fire from entering the common roof area directly above these units followed by preventing fire from spreading into other buildings.

In this incident, there were multiple exposures including Delta Exposure, Delta Exposure 2, Bravo Division, and Charlie Exposure. The tactical objective was to contain the fire to “the box” or area of origin (the common attic of the Fire Building above the sushi restaurant, cleaners, and nail salon) and tackle the exposure issue. All fire was located and extinguished

MUTUAL AID:

4th Alarm – (4/9/22) 1350 hours, City of Benicia, Benicia Port. There were no injuries.

On April 9, 2022, Fire Boat St. Francis (FB3) was dispatched on a mutual aid assignment to the City of Benicia to assist with a pier fire. After approximately 3 hours enroute, the St. Francis checked in with the Marine Group Supervisor and promptly went to work. The St. Francis was requested by Benicia specifically for the under-pier monitor nozzles which allow for large volumes of water to be sprayed under the old wood pier deck which had been subsequently covered with asphalt. Beginning at about 1700 hours, the crew of the St. Francis made countless passes alongside the pier face, applying water with special attention to protect the underside of a metal tower and prevent the spread of fire beyond a designated point established by the Incident Commander.

At 2400 hours, a Pilot and Engineer crew change took place, and the work continued until 0720 hours on the morning of April 10, when a brief break was made to change out some of the firefighters and officer. From 0730 to 0945 hours, FB3 continued with its task of spraying water under the pier. At 0945 hours, FB3 had to disengage from duties to address an overheating fire pump. The strainers had become clogged with debris from the fire. Fireboat Engineer Brint Stewart worked hard to correct the problem. Operations were restored at 1030 hours. FB3 continued one last pass to hydraulic the underside of the pier structure.

On April 10, FB3 was released from the incident and returned to base with a 2.5 hour return trip. E35 was back in Service ALS at 2400 hours until 0600 hours.

Total service time (response, on scene, return and clean up) = 26 hours

on scene time = approx. 18.25 hours

used approx. 600 + gallons of diesel fuel. (tank capacity is 10,000 gallons - normally around 7,000 gallons on hand)

Total personnel used: 12

| AMBULANCE LEVELS BY DAY | | | | | | | | | | |
|--|---------|----|----|-----|-------|--|------|------|-------|-------|
| April 2022 | | | | | | | | | | |
| RED >=3% at level 2 or below for the day | | | | | | RED/YELLOW >= 5% at level 2 or below for the day | | | | |
| | Minutes | | | | | Percentage | | | | |
| | 0 | 1 | 2 | <7 | >=7 | 0 | 1 | 2 | <7 | >=7 |
| 1 | NO DATA | | | | | NO DATA | | | | |
| 2 | NO DATA | | | | | NO DATA | | | | |
| 3 | NO DATA | | | | | NO DATA | | | | |
| 4 | NO DATA | | | | | NO DATA | | | | |
| 5 | NO DATA | | | | | NO DATA | | | | |
| 6 | NO DATA | | | | | NO DATA | | | | |
| 7 | NO DATA | | | | | NO DATA | | | | |
| 8 | NO DATA | | | | | NO DATA | | | | |
| 9 | NO DATA | | | | | NO DATA | | | | |
| 10 | NO DATA | | | | | NO DATA | | | | |
| 11 | NO DATA | | | | | NO DATA | | | | |
| 12 | NO DATA | | | | | NO DATA | | | | |
| 13 | NO DATA | | | | | NO DATA | | | | |
| 14 | | 6 | 14 | 135 | 1,285 | 0.0% | 0.4% | 1.0% | 9.4% | 89.2% |
| 15 | | 11 | 26 | 179 | 1,224 | 0.0% | 0.8% | 1.8% | 12.4% | 85.0% |
| 16 | 36 | 80 | 64 | 249 | 1,011 | 2.5% | 5.6% | 4.4% | 17.3% | 70.2% |
| 17 | | 3 | 3 | 319 | 1,115 | 0.0% | 0.2% | 0.2% | 22.2% | 77.4% |
| 18 | 52 | 25 | 55 | 213 | 1,095 | 3.6% | 1.7% | 3.8% | 14.8% | 76.0% |
| 19 | 13 | 24 | 23 | 242 | 1,138 | 0.9% | 1.7% | 1.6% | 16.8% | 79.0% |
| 20 | 7 | 20 | 36 | 178 | 1,199 | 0.5% | 1.4% | 2.5% | 12.4% | 83.3% |
| 21 | 8 | 17 | 24 | 185 | 1,206 | 0.6% | 1.2% | 1.7% | 12.9% | 83.8% |
| 22 | 7 | 17 | 35 | 301 | 1,080 | 0.5% | 1.2% | 2.4% | 20.9% | 75.0% |
| 23 | | | | 102 | 1,338 | 0.0% | 0.0% | 0.0% | 7.1% | 92.9% |
| 24 | 4 | 14 | 38 | 362 | 1,022 | 0.3% | 1.0% | 2.6% | 25.1% | 71.0% |
| 25 | | 13 | 13 | 149 | 1,265 | 0.0% | 0.9% | 0.9% | 10.4% | 87.9% |
| 26 | 21 | 37 | 51 | 296 | 1,035 | 1.5% | 2.6% | 3.5% | 20.6% | 71.9% |
| 27 | 49 | 52 | 67 | 261 | 1,011 | 3.4% | 3.6% | 4.7% | 18.1% | 70.2% |
| 28 | | | 7 | 101 | 1,332 | 0.0% | 0.0% | 0.5% | 7.0% | 92.5% |
| 29 | 57 | 75 | 67 | 429 | 812 | 4.0% | 5.2% | 4.7% | 29.8% | 56.4% |
| 30 | 197 | 53 | 40 | 414 | 736 | 13.7% | 3.7% | 2.8% | 28.8% | 51.1% |
| APRIL. Total: | | | | | | 1.8% | 1.8% | 2.3% | 16.8% | 77.2% |
| MARCH. Total: | | | | | | 0.8% | 0.9% | 1.4% | 12.1% | 84.8% |

Suppression Statistics April 2022

| | April | March |
|------------------------|-------|-------|
| Building Alarms | 984 | 1005 |
| Smoke In the Buildings | 65 | 92 |
| Fire In the Buildings | 53 | 55 |
| FULL boxes | 10 | 0 |
| TOTAL Boxes | 128 | 114 |
| Working Fires | 22 | 11 |
| Greater Alarms | 3 | 0 |
| Water Rescue Calls | 6 | 11 |
| Cliff Rescue Calls | 1 | 3 |

Working Fires April 2022

| Count | Date | Time | Address | Description | Box | Batt |
|-------|-----------|-------|--------------------|--------------|------|------|
| 1 | 4/2/2022 | 23:48 | 440 GEARY ST | WORKING FIRE | 1411 | B01 |
| 2 | 4/3/2022 | 13:09 | 333 SAN JOSE AV | WORKING FIRE | 5612 | B06 |
| 3 | 4/4/2022 | 20:35 | 400 UPPER TERRACE | WORKING FIRE | 5165 | B05 |
| 4 | 4/6/2022 | 14:42 | 1051 3RD ST | WORKING FIRE | 2162 | B03 |
| 5 | 4/6/2022 | 15:42 | 635 MOULTRIE ST | WORKING FIRE | 5741 | B06 |
| 6 | 4/8/2022 | 5:40 | 141 NOE ST | 3RD ALARM | 5212 | B05 |
| 7 | 4/8/2022 | 8:29 | 48 6TH ST | WORKING FIRE | 2248 | B02 |
| 8 | 4/8/2022 | 12:54 | 2001 BALBOA ST | WORKING FIRE | 7171 | B07 |
| 9 | 4/9/2022 | 13:06 | 160 8TH ST | WORKING FIRE | 2318 | B02 |
| 10 | 4/9/2022 | 13:15 | 998 GENEVA AV | WORKING FIRE | 6175 | B09 |
| 11 | 4/11/2022 | 17:08 | 190 DAKOTA ST | WORKING FIRE | 2614 | B10 |
| 12 | 4/12/2022 | 2:53 | 640 EDDY | WORKING FIRE | 1643 | B02 |
| 13 | 4/12/2022 | 22:53 | 1210 OAKDALE AV | WORKING FIRE | 6572 | B10 |
| 14 | 4/14/2022 | 12:17 | 498 NATOMA ST | WORKING FIRE | 2252 | B03 |
| 15 | 4/17/2022 | 14:29 | 370 TURK ST | WORKING FIRE | 1554 | B02 |
| 16 | 4/18/2022 | 11:29 | 301 WEST PORTAL AV | 3RD ALARM | 8561 | B08 |
| 17 | 4/18/2022 | 16:22 | 1701 TENNESSEE ST | WORKING FIRE | 2641 | B10 |
| 18 | 4/18/2022 | 23:57 | 124 DAKOTA ST | WORKING FIRE | 2614 | B10 |
| 19 | 4/19/2022 | 7:16 | 1200 OAKDALE AV | WORKING FIRE | 6572 | B10 |
| 20 | 4/23/2022 | 0:26 | 25 ESSEX ST | WORKING FIRE | 2136 | B03 |
| 21 | 4/26/2022 | 12:02 | 947 FOLSOM ST | WORKING FIRE | 2253 | B03 |
| 22 | 4/26/2022 | 14:11 | 208 LEXINGTON ST | WORKING FIRE | 5434 | B06 |

Deputy Chief of Operations
Robert Postel
Report to the Commission

EMS Division



San Francisco Fire Department
EMS Division
Acronyms/Abbreviations/Terms

| Term/ Acronym | Definition | Area of Focus |
|-------------------|---|--------------------|
| 5150 | Involuntary Mental Health Hold | CP/Clinical |
| ABC's | Airway, Breathing, Circulation | Clinical |
| ACLS | Advanced Cardiac Life Support | Clinical |
| ADU | Acute Diversion Unit | CP/EMS6 |
| AED | Automatic External Defibrillator | Clinical |
| ALS | Advanced Life Support | Training |
| AMA | Against Medical Advice | Clinical |
| Amb | Ambulance | Clinical |
| AMS | Altered Mental Status | Clinical |
| AOS | Arrived on Scene | Operations |
| AOT | Assisted Outpatient Treatment (Laura's Law) | CP/EMS6 |
| APOT | Ambulance Patient Offload Time | Operations |
| APS | Adult Protective Services | CP/EMS6 |
| ASA | Aspirin | Clinical |
| AUD | Alcohol Use Disorder | CP/EMS6 |
| BLS | Basic Life Support | Training |
| BP | Blood Pressure | Clinical |
| BVM | Bag Valve Mask | Clinical |
| CaCl | Calcium Chloride | Clinical |
| CAL-MAT | California Medical Assistance Team | Disaster |
| CCC | COVID-19 Command Center | |
| CCP | Casualty Collection Point | MCI/Active Shooter |
| CCP Leader | Casualty Collection Leader | MCI/Active Shooter |
| CDMIN | California Disaster Medical Network | Disaster |
| CDPH | California Department of Public Health | |
| CECC | Central Emergency Communication Center | Operations |
| CHF | Congestive Heart Failure | Clinical |
| CHN | Chinese Hospital | Hospital |
| CIWA | Clinical Institute Withdrawal Assessment | CP/EMS6 |
| CM | Case Manager | CP/EMS6 |
| COPD | Chronic Obstructive Pulmonary Disease | Clinical |
| CP | Community Paramedic | CP/EMS6 |
| CPB | CPMC – Mission Bernal | Hospital |
| CPMC | California Pacific Medical Center | Hospital |
| CPR | Cardio-Pulmonary Resuscitation | Training |
| CPV | CPMC – Van Ness Campus | Hospital |
| CQI | Continuous Quality Improvement | Operations |
| C-Spine | Cervical Spine | Clinical |
| D ₁₀ W | Dextrose 10% in water | Clinical |
| D ₂₅ W | Dextrose 25% in water | Clinical |
| D ₅₀ W | Dextrose 50% in water | Clinical |
| DEM | Department of Emergency Management | |

| Term/ Acronym | Definition | Area of Focus |
|------------------|---|------------------|
| DKA | Diabetic Ketoacidosis | Clinical |
| DMAT | Disaster Medical Assistance Team | Disaster |
| DMC | CPMC – Davies Medical Center | Hospital |
| DMORT | Disaster Mortuary Team | Disaster |
| DNR | Do Not Resuscitate | Clinical |
| DOA | Dead on Arrival | Operations |
| DOC | Department Operations Center | Disaster |
| DPH | Department of Public Health | |
| DUCC | Dore Urgent Care | CP/EMS6 |
| DX | Diagnosis | Clinical |
| ECG | Electro-Cardiogram | Clinical |
| ED | Emergency Department | |
| EDCM | Emergency Department Case Management | CP/EMS6 |
| EDIE | Emergency Department Information Exchange | CP/EMS6 |
| EMS | Emergency Medical Services | |
| EMS1 | Assistant Deputy Chief, EMS Division | Operations |
| EMS2 | Section Chief, EMS Operations | Operations |
| EMS6 | Community Paramedic Officer | Operations |
| EMS6A | Field Unit Call Sign (Alpha) | CP/EMS6 |
| EMS6B | Field Unit Call Sign (Bravo) | CP/EMS6 |
| EMS6C | Field Unit Call Sign (Charlie) | CP/EMS6 |
| EMS6D | Field Unit Call Sign (Delta) | CP/EMS6 |
| EMSA | Emergency Medical Services Agency | |
| EMT | Emergency Medical Technician | Operations |
| EOC | Emergency Operations Center | Disaster |
| EOP | Emergency Operations Plan | Disaster |
| Epi | Epinephrine | Clinical |
| ESF | Emergency Support Function | Disaster |
| ETT | Endotracheal Tube | Clinical |
| FEMA | Federal Emergency Management Agency | Disaster |
| FF/PM | Firefighter Paramedic | Operations |
| G | Gram | Clinical |
| GCS | Glasgow Coma Scale | Clinical |
| GYN | Gynecological | Clinical |
| HazMat | Hazardous Materials Incident | Training |
| HICT | High Intensity Care Team | CP/EMS6 |
| HIPAA | Health Insurance Portability and Accountability Act of 1996 (regulations protecting the privacy and security of certain health information) | CP/EMS6 |
| HOT | Homeless Outreach Team | CP/EMS6 |
| HSOC | Healthy Streets Operation Center (Mayor’s response task force for unhoused) | CP/EMS6 |
| HTN | Hypertension | Clinical |
| IandQ Site | Isolation and Quarantine Site (COVID-19) | CP/EMS6 |
| IC | Incident Commander | Disaster |
| ICM | Intensive Case Management | CP/EMS6 |
| ICS | Incident Command System | Disaster |

| Term/ Acronym | Definition | Area of Focus |
|------------------|--|------------------|
| ICU | Intensive Care Unit | Operations |
| IM | Intramuscular | Clinical |
| IN | Intranasal | Clinical |
| IO | Intraosseous | Clinical |
| IV | Intravenous | Clinical |
| IVDA | IV Drug Abuse | Clinical |
| IVP | IV Push | Clinical |
| J | Joule (electrical measurement) | Clinical |
| JEOC | Joint Emergency Operations Center | Disaster |
| JH | Joe Healy Medical Detox | CP/EMS6 |
| kg | Kilogram | Clinical |
| KSF | Kaiser – San Francisco | Hospital |
| KSS | Kaiser – South San Francisco | Hospital |
| LEMSA | Local Emergency Medical Services Agency | |
| LOC | Level of Consciousness | Training |
| lpm | Liter Per Minute | Training |
| Lt49 | Lieutenant, Station 49 | Operations |
| LUCAS | Lund University Cardiopulmonary Assist System (mechanical chest compression device) | Operations |
| MAD | Mucosal Atomizer Device | Clinical |
| MAP | Managed Alcohol Program | CP/EMS6 |
| max | Maximum | Training |
| mcg | Microgram | Clinical |
| MCI | Multi-Casualty Incident | Disaster |
| MCT | Mass Casualty Transport | Disaster |
| MCU | Mass Casualty Unit | Disaster |
| MDT | Mobile Data Terminal | Operations |
| ME | Medical Examiner | Operations |
| meds | Medications | Clinical |
| mEq | Milliequivalent | Clinical |
| mg | Milligram | Clinical |
| MGS | Medical Group Supervisor | Disaster |
| MHOAC | Medical/Health Operational Area Coordinator | Disaster |
| min. | Minute | Training |
| MI | Myocardial Infarction | Clinical |
| ml | Milliliter | Clinical |
| MMRT | Mobile Medical Response Team | CP/EMS6 |
| MOU | Memorandum of Understanding | Operations |
| MRN | Medical Record Number | Clinical |
| MVA | Motor Vehicle Accident | Operations |
| NDMS | National Disaster Medical System | Disaster |
| NIMS | National Incident Management System | Disaster |
| NPA | Nasopharyngeal Airway | Clinical |
| NPO | Nothing per Mouth | Clinical |
| NS | Normal Saline | Clinical |
| NTG | Nitroglycerin | Clinical |
| NTI | Nasal Tracheal Intubation | Clinical |

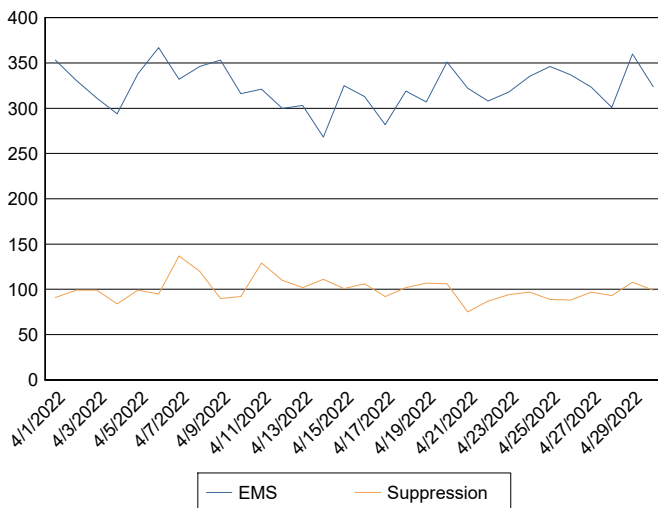
| Term/ Acronym | Definition | Area of Focus |
|------------------|--|------------------|
| OA | Operational Area | Disaster |
| OB | Obstetrical | Clinical |
| OES | Office of Emergency Services | Disaster |
| OPA | Oropharyngeal Airway | Clinical |
| OTC | Over the Counter | Clinical |
| OTI | Oral Tracheal Intubation | Clinical |
| PACC | Post-Acute Community Conservatorship | CP/EMS6 |
| PALS | Pediatric Advanced Life Support | Training |
| PCR | Patient Care Report | Documentation |
| PDC | Patient Distribution Center | Disaster |
| PDT | Patient Declines Transport | Operations |
| PEA | Pulseless Electrical Activity | Clinical |
| PERRLA | Pupils equal, round, and reactive to light and accommodation | Clinical |
| PGO | Public Guardian Office | CP/EMS6 |
| PHI | Protected Health Information | CP/EMS6 |
| PHTLS | Pre-Hospital Trauma Life Support | Training |
| PM | Paramedic | Operations |
| PO | By Mouth | Clinical |
| POV | Privately Owned Vehicle | Operations |
| prn | As Needed | Clinical |
| PSH | Permanent Supportive Housing | CP/EMS6 |
| PT | Patient | Operations |
| PTA | Prior to Arrival | Clinical |
| QRS | Parts of Cardiac Contraction Complex | Training |
| R/O | Rule Out | Clinical |
| RC | Rescue Captain | Operations |
| RC1 | Rescue Captain Field Unit 1 | Operations |
| RC2 | Rescue Captain Field Unit 2 | Operations |
| RC3 | Rescue Captain Field Unit 3 | Operations |
| RC4 | Rescue Captain Field Unit 4 | Operations |
| RC49 | Rescue Captain, Station 49 | Operations |
| RC5 | Rescue Captain Field Unit 5 | Operations |
| RC6 | Rescue Captain – CP at Sobering Center | CP/EMS6 |
| RC7 | Rescue Captain – Street Crisis Response Team (SCRT) | CP/EMS6 |
| RDMHC | Regional Disaster Medical/Health Coordinator | Disaster |
| RDMHS | Regional Disaster Medical/Health Specialist | Disaster |
| RGS | Rescue Group Supervisor | Active Shooter |
| RIS | Rapid Intoxication Scale | CP/EMS6 |
| RMM | Rescue Medical Manager | Active Shooter |
| ROI | Release of Information | CP/EMS6 |
| RTF | Rescue Task Force | Active Shooter |
| SBP | Systolic Blood Pressure | Clinical |
| SCRT | Street Crisis Response Team | CP/EMS6 |
| SEMS | Standardized Emergency Management System | Disaster |
| SET | Seton Medical Center | Hospital |
| SFFD | San Francisco Fire Department | |

| Term/ Acronym | Definition | Area of Focus |
|-----------------------|---|------------------|
| SFPD | San Francisco Police Department | |
| SFSC | San Francisco Sobering Center | Hospital |
| SGA | Supraglottic Airway (airway device) | Clinical |
| SIP Site | Shelter in Place Site (COVID-19) | CP/EMS6 |
| SL | Sublingual | Clinical |
| SP | Shared Priority | CP/EMS6 |
| SPA | Service Provider Agreement | Operations |
| SQ | Subcutaneous | Clinical |
| START | Simple Triage and Rapid Treatment | Operations |
| STF | St. Francis Memorial Hospital | Hospital |
| STM | St. Mary's Medical Center | Hospital |
| SUD | Substance Abuse Disorder | CP/EMS6 |
| SVT | Supraventricular Tachycardia | Training |
| SW | Social Worker | CP/EMS6 |
| TEMS | Tactical Emergency Services Team | Active Shooter |
| TKO | To Keep Open | Clinical |
| TW | Tom Waddell at 50 Ivy | CP/EMS6 |
| TWUCC | Tom Waddell Urgent Care Clinic Golden Gate Ave | CP/EMS6 |
| Tx | Treatment | Clinical |
| UCB | University of California – Mission Bay (Children's) | Hospital |
| UCM | University of California San Francisco (UCSF) – Parnassus | Hospital |
| UOA | Upon Our Arrival | Operations |
| UTL | Unable to Locate | Operations |
| VAH | Veterans Affairs Medical Center | Hospital |
| V-FIRE IN BUILDING | Automatic External FIRE IN BUILDING | Clinical |
| V-Tach | Ventricular Tachycardia | Clinical |
| WPIC | Whole Person Integrated Care | CP/EMS6 |
| ZSFG/SFG | Zuckerberg San Francisco General Hospital | Hospital |

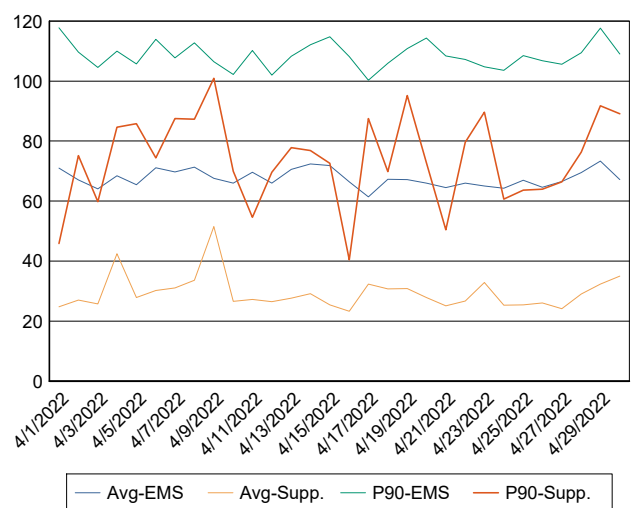
SFFD Activity Summary From 04/01/2022 To 04/30/2022

| Call Date | EMS Calls | Suppression Calls | Total Calls | EMS Call Avg. (Min) | Transport Avg. (Min) | Suppression Avg. (Min) | EMS Suppression P90 (Min) | Suppression P90 (Min) |
|------------|-----------|-------------------|-------------|---------------------|----------------------|------------------------|---------------------------|-----------------------|
| 04/01/2022 | 353 | 91 | 444 | 71.00 | 90.60 | 24.74 | 117.78 | 45.87 |
| 04/02/2022 | 331 | 99 | 430 | 67.08 | 87.81 | 26.97 | 109.68 | 75.17 |
| 04/03/2022 | 311 | 99 | 410 | 64.04 | 83.19 | 25.70 | 104.58 | 59.87 |
| 04/04/2022 | 294 | 84 | 378 | 68.49 | 85.73 | 42.44 | 110.02 | 84.68 |
| 04/05/2022 | 338 | 99 | 437 | 65.48 | 85.59 | 27.87 | 105.72 | 85.79 |
| 04/06/2022 | 367 | 95 | 462 | 71.13 | 87.90 | 30.26 | 113.93 | 74.43 |
| 04/07/2022 | 332 | 137 | 469 | 69.77 | 87.92 | 31.06 | 107.73 | 87.46 |
| 04/08/2022 | 346 | 120 | 466 | 71.27 | 92.75 | 33.61 | 112.70 | 87.26 |
| 04/09/2022 | 353 | 90 | 443 | 67.61 | 87.64 | 51.54 | 106.47 | 100.89 |
| 04/10/2022 | 316 | 92 | 408 | 66.03 | 85.83 | 26.59 | 102.18 | 69.95 |
| 04/11/2022 | 321 | 129 | 450 | 69.57 | 87.94 | 27.23 | 110.20 | 54.62 |
| 04/12/2022 | 300 | 110 | 410 | 65.96 | 83.98 | 26.45 | 102.03 | 69.57 |
| 04/13/2022 | 303 | 102 | 405 | 70.52 | 87.46 | 27.69 | 108.27 | 77.77 |
| 04/14/2022 | 268 | 111 | 379 | 72.34 | 91.45 | 29.14 | 112.10 | 76.88 |
| 04/15/2022 | 325 | 101 | 426 | 71.83 | 90.72 | 25.47 | 114.78 | 72.60 |
| 04/16/2022 | 313 | 106 | 419 | 66.46 | 87.82 | 23.32 | 108.16 | 40.41 |
| 04/17/2022 | 282 | 92 | 374 | 61.39 | 81.61 | 32.37 | 100.24 | 87.47 |
| 04/18/2022 | 319 | 102 | 421 | 67.27 | 86.48 | 30.71 | 105.87 | 69.81 |
| 04/19/2022 | 307 | 107 | 414 | 67.18 | 87.13 | 30.83 | 110.87 | 95.12 |
| 04/20/2022 | 351 | 106 | 457 | 65.99 | 91.73 | 27.86 | 114.34 | 72.78 |
| 04/21/2022 | 322 | 75 | 397 | 64.49 | 87.62 | 25.06 | 108.38 | 50.40 |
| 04/22/2022 | 308 | 87 | 395 | 65.97 | 87.76 | 26.69 | 107.16 | 79.58 |
| 04/23/2022 | 318 | 94 | 412 | 65.00 | 85.83 | 32.83 | 104.77 | 89.60 |
| 04/24/2022 | 335 | 97 | 432 | 64.31 | 84.35 | 25.33 | 103.56 | 60.62 |
| 04/25/2022 | 346 | 89 | 435 | 66.92 | 88.53 | 25.40 | 108.53 | 63.61 |
| 04/26/2022 | 337 | 88 | 425 | 64.64 | 86.90 | 26.12 | 106.78 | 64.00 |
| 04/27/2022 | 323 | 97 | 420 | 66.54 | 86.21 | 24.14 | 105.58 | 66.43 |
| 04/28/2022 | 301 | 93 | 394 | 69.50 | 87.91 | 29.02 | 109.47 | 76.30 |
| 04/29/2022 | 360 | 108 | 468 | 73.38 | 93.89 | 32.36 | 117.62 | 91.73 |
| 04/30/2022 | 324 | 99 | 423 | 67.18 | 86.42 | 34.97 | 108.96 | 89.09 |

Calls By Date



Call Length (Average and P90)



Emergency Medical Services
Fire Commission Report – April 1 to April 30, 2022
ADC Sandra Tong

General Activities

On April 15, 13 new members graduated from the H3L2 Paramedic Academy. It was the first academy since 2010. EMS is very happy to welcome these new members working at Station 49.

A new group began the Community Paramedic course on April 18. This is a six-week program consisting of 18 H3L2s and 6 H33s.

On April 16, ten 9910 interns started their EMT experience on the ambulance. These interns completed the City EMT program, passed their National EMT Registry exam, are licensed EMTs in California, and completed the 2-week orientation program. EMS is extremely excited to have these members on board, look forward to mentoring them, and providing them real life EMS experience.

**San Francisco Fire Department
Incident Distribution - Individuals Experiencing Homelessness (Last 6 Months)**

| | | No | | Yes | | Total |
|-------------------|---------|-----------|-----|------------|------|--------------|
| EMS6 | 2021/11 | 99 | 40% | 149 | 60% | 248 |
| | 2021/12 | 83 | 45% | 100 | 55% | 183 |
| | 2022/01 | 122 | 45% | 152 | 55% | 274 |
| | 2022/02 | 104 | 48% | 114 | 52% | 218 |
| | 2022/03 | 114 | 54% | 98 | 46% | 212 |
| | 2022/04 | 91 | 44% | 115 | 56% | 206 |
| | 2022/05 | | | 7 | 100% | 7 |
| Fire Incidents | 2021/11 | | | 63 | | 63 |
| | 2021/12 | | | 52 | | 52 |
| | 2022/01 | | | 69 | | 69 |
| | 2022/02 | | | 52 | | 52 |
| | 2022/03 | | | 89 | | 89 |
| | 2022/04 | | | 59 | | 59 |
| Medical Incidents | 2021/11 | 4,733 | 79% | 1,286 | 21% | 6,019 |
| | 2021/12 | 4,967 | 76% | 1,527 | 24% | 6,494 |
| | 2022/01 | 5,288 | 79% | 1,397 | 21% | 6,685 |
| | 2022/02 | 4,692 | 80% | 1,197 | 20% | 5,889 |
| | 2022/03 | 4,925 | 79% | 1,322 | 21% | 6,247 |
| | 2022/04 | 4,911 | 79% | 1,296 | 21% | 6,207 |
| | 2022/05 | 37 | 79% | 10 | 21% | 47 |

Incident Distribution By Station Area -Individuals Experiencing Homelessness (Last 3 Months)

| | 2022/02 | | | 2022/03 | | | 2022/04 | | |
|-------------------------|---------------|----------------------|-------|---------------|----------------------|-------|---------------|----------------------|-------|
| | Medical Calls | Homelessness Related | % | Medical Calls | Homelessness Related | % | Medical Calls | Homelessness Related | % |
| 01 - 935 Folsom St. | 843 | 138 | 16.37 | 920 | 141 | 15.33 | 889 | 128 | 14.40 |
| 02 - 1340 Powell St. | 198 | 14 | 7.07 | 205 | 20 | 9.76 | 185 | 15 | 8.11 |
| 03 - 1067 Post St. | 1,285 | 189 | 14.71 | 1,344 | 168 | 12.50 | 1,291 | 195 | 15.10 |
| 04 - 449 Mission Rock | 100 | 8 | 8.00 | 104 | 14 | 13.46 | 94 | 12 | 12.77 |
| 05 - 1301 Turk St. | 303 | 54 | 17.82 | 332 | 39 | 11.75 | 352 | 62 | 17.61 |
| 06 - 135 Sanchez St. | 374 | 63 | 16.84 | 444 | 68 | 15.32 | 390 | 46 | 11.79 |
| 07 - 2300 Folsom St. | 460 | 66 | 14.35 | 531 | 63 | 11.86 | 516 | 84 | 16.28 |
| 08 - 36 Bluxome | 224 | 43 | 19.20 | 203 | 37 | 18.23 | 244 | 42 | 17.21 |
| 09 - 2245 Jerrold Ave. | 99 | 27 | 27.27 | 119 | 30 | 25.21 | 115 | 28 | 24.35 |
| 10 - 655 Presidio | 189 | 31 | 16.40 | 219 | 37 | 16.89 | 207 | 28 | 13.53 |
| 11 - 3880 26th St. | 233 | 47 | 20.17 | 277 | 38 | 13.72 | 285 | 50 | 17.54 |
| 12 - 1145 Stanyan St. | 112 | 21 | 18.75 | 119 | 16 | 13.45 | 87 | 10 | 11.49 |
| 13 - 530 Sansome St. | 282 | 54 | 19.15 | 324 | 56 | 17.28 | 342 | 64 | 18.71 |
| 14 - 551 26th Ave. | 114 | 13 | 11.40 | 111 | 17 | 15.32 | 138 | 18 | 13.04 |
| 15 - 1000 Ocean Ave. | 166 | 20 | 12.05 | 229 | 22 | 9.61 | 192 | 33 | 17.19 |
| 16 - 2251 Greenwich St. | 176 | 28 | 15.91 | 213 | 34 | 15.96 | 199 | 30 | 15.08 |
| 17 - 1295 Shafter St. | 284 | 37 | 13.03 | 301 | 35 | 11.63 | 309 | 31 | 10.03 |
| 18 - 1933 32nd Ave. | 105 | 15 | 14.29 | 145 | 19 | 13.10 | 122 | 9 | 7.38 |
| 19 - 390 Buckingham Way | 155 | 15 | 9.68 | 166 | 19 | 11.45 | 178 | 25 | 14.04 |
| 20 - 285 Olympia St. | 48 | 2 | 4.17 | 43 | 0 | 0.00 | 47 | 1 | 2.13 |
| 21 - 1443 Grove St. | 204 | 24 | 11.76 | 220 | 30 | 13.64 | 194 | 35 | 18.04 |
| 22 - 1290 16th Ave. | 106 | 12 | 11.32 | 118 | 14 | 11.86 | 123 | 9 | 7.32 |
| 23 - 1348 45th Ave. | 116 | 11 | 9.48 | 108 | 14 | 12.96 | 112 | 19 | 16.96 |
| 24 - 100 Hoffman St. | 55 | 1 | 1.82 | 61 | 3 | 4.92 | 68 | 8 | 11.76 |
| 25 - 3305 3rd St. | 93 | 7 | 7.53 | 93 | 14 | 15.05 | 91 | 13 | 14.29 |
| 26 - 80 Digby | 47 | 5 | 10.64 | 37 | 4 | 10.81 | 44 | 5 | 11.36 |
| 28 - 1814 Stockton St. | 203 | 19 | 9.36 | 229 | 24 | 10.48 | 216 | 22 | 10.19 |
| 29 - 299 Vermont St. | 129 | 20 | 15.50 | 144 | 23 | 15.97 | 125 | 23 | 18.40 |

| | 2022/02 | | | 2022/03 | | | 2022/04 | | |
|---------------------------|---------------|----------------------|-------|---------------|----------------------|-------|---------------|----------------------|-------|
| | Medical Calls | Homelessnsns Related | % | Medical Calls | Homelessnsns Related | % | Medical Calls | Homelessnsns Related | % |
| 31 - 441 12th Ave. | 186 | 30 | 16.13 | 186 | 30 | 16.13 | 209 | 36 | 17.22 |
| 32 - 194 Park St. | 128 | 8 | 6.25 | 182 | 10 | 5.49 | 162 | 16 | 9.88 |
| 33 - 8 Capitol St. | 155 | 19 | 12.26 | 163 | 16 | 9.82 | 146 | 17 | 11.64 |
| 34 - 499 41st Ave. | 110 | 19 | 17.27 | 106 | 20 | 18.87 | 100 | 16 | 16.00 |
| 35 - Pier 22 1/2 | 221 | 47 | 21.27 | 228 | 51 | 22.37 | 194 | 36 | 18.56 |
| 36 - 109 Oak St. | 701 | 129 | 18.40 | 784 | 168 | 21.43 | 773 | 167 | 21.60 |
| 37 - 798 Wisconsin St. | 72 | 4 | 5.56 | 74 | 8 | 10.81 | 83 | 10 | 12.05 |
| 38 - 2150 California St. | 224 | 23 | 10.27 | 225 | 25 | 11.11 | 233 | 16 | 6.87 |
| 39 - 1091 Portola Dr. | 64 | 7 | 10.94 | 86 | 20 | 23.26 | 79 | 15 | 18.99 |
| 40 - 2155 18th Ave. | 103 | 11 | 10.68 | 122 | 14 | 11.48 | 132 | 15 | 11.36 |
| 41 - 1325 Leavenworth St. | 233 | 27 | 11.59 | 207 | 19 | 9.18 | 245 | 28 | 11.43 |
| 42 - 2430 San Bruno Ave. | 133 | 19 | 14.29 | 137 | 24 | 17.52 | 148 | 13 | 8.78 |
| 43 - 720 Moscow St. | 216 | 26 | 12.04 | 218 | 13 | 5.96 | 196 | 15 | 7.65 |
| 44 - 1298 Girard St. | 138 | 12 | 8.70 | 158 | 8 | 5.06 | 145 | 8 | 5.52 |
| 48 - 800 Avenue I, TI | 39 | 3 | 7.69 | 49 | 12 | 24.49 | 32 | 5 | 15.63 |
| 51 - 218 Lincoln Blvd | 47 | 9 | 19.15 | 47 | 8 | 17.02 | 54 | 7 | 12.96 |

Community Paramedic Monthly Fire Commission Report

Program Overview

The success of EMS6 has led to the development of other community paramedic programs. All community paramedics work under the same engagement protocols established in the California State Community Paramedic Pilot Project for EMS6 and are trained to an equivalent level.

| Program | Vulnerable population | Launch date |
|-------------------------------|--|-------------------|
| EMS6 | Frequent 911 users | January 31, 2016 |
| Street Crisis Response Team0 | Community members in behavioral crisis | November 30, 2020 |
| Street Overdose Response Team | Overdose response | August 2, 2021 |
| Street Wellness Response Team | Persons requiring a wellbeing check | January 24, 2022 |

Community Paramedicine Highlights

The Memorandum of Understanding between the Department of Public Health and the Department regarding training designated paramedics to write involuntary mental health holds is on a final draft, and training dates have been calendarized for May 25 and June 1. It is expected that in early June our captain level community paramedics will have the ability to place 5150 holds.

Community Paramedicine training (cohort four) started on April 18 and will conclude on May 27. Two of the 24 members in the training will begin working on the seventh Street Crisis Response Team on May 28. The remaining members will go back to their current assignments until June 25, when they will staff the second Street Overdose Response Team and four more Street Wellness Response Teams.

Chief Pang represented the SFFD in a Budget and Appropriations Committee of the SF Board of Supervisors on 4/20/22 (File #220366).

- 1 in 4 of person-to-person engagements of the Street Crisis Response and Street Wellness Response Teams results in an individual being transported to appropriate care
- That the SCRT is currently responding to 62% of police code 800B (with the SFPD responding to the remaining 38%). This reflects the growing number of 800B calls—14,000 annually now, compared to 10,000 annually in 2019. If 800B call volume had remained static at approximately 10,000/year, the SCRT would be effectively responding to 85% of the calls.
- Recommendation from Budget and Legislative Analyst’s report
 - Ensure that SCRT is meeting the City’s objectives of removing law enforcement from responses to street mental health crises, suggest that DEM, DPH, SFFD and SFPD improve their data collection efforts to record the entity that responded to all mental health crisis calls, including SCRT, SFPD, and paramedics. This data should also identify whether SFPD responded to a mental health crisis call at the request of SCRT or under other circumstances.

Street Crisis Response Team will begin to be dispatched using the Emergency Medical Dispatch (EMD) in early June 2022.

Currently, the Department of Emergency Communications has dispatched SCRT units using a “tied” call system in which either a SCRT unit *or* a SFPD unit responds to an 800B. Using this process, if a

SCRT is not available to respond to the 800B, SFPD covers the call. If neither SCRT or SFPD is available, the call pends until either SCRT or SFPD is able to respond.

When EMD begins, all calls that would have been assigned as 800B will now be processed using the medical dispatching system. What this means is that there will effectively be no more 800B calls, as all calls for service will be answered by some combination (depending on the medical acuity) of:

- SCRT
- SCRT plus an ambulance
- Ambulance (if the nature of the call indicates that the person will likely require transport to an ER)

EMS6 Report, 4/1/22 to 4/30/22

Total encounters: 363
 Average encounters per day: 12
 Average connection rate to resource: 53%
 Utilization change of top 20 utilizers engaged by EMS6 from the month before the operational period to current: -34%

| Encounter Type | Current |
|-----------------------------|---------|
| Outreach | 177 |
| Consult | 86 |
| 911 - EMS6 special call | 49 |
| 911 - EMS6 self-assigned | 35 |
| Case Conference | 7 |
| 911 - System | 7 |
| Conservator Show of Support | 1 |
| <i>Total</i> | 362 |

Connections Made:

| Resource | Referrals Offered | Connections Made | Connection Rate |
|--|-------------------|------------------|-----------------|
| Sobering Center | 26 | 19 | 0.730769231 |
| Shelter - Long Term | 10 | 7 | 0.7 |
| Social Services | 10 | 6 | 0.6 |
| Psychiatric Services | 9 | 5 | 0.555555556 |
| Clinic | 4 | 1 | 0.25 |
| Shelter - Short Term | 10 | 2 | 0.2 |
| Navigation Center - Time Limited | 2 | 0 | 0 |
| Substance/Dual Diagnosis Treatment | 2 | 0 | 0 |
| Homeless Outreach Team | 1 | 0 | 0 |
| Hummingbird | 1 | 0 | 0 |
| Joe Healy Detox | 1 | 0 | 0 |
| Homeward Bound | 0 | 0 | 0 |
| Navigation Center - Pathway to Housing | 0 | 0 | 0 |
| Total | 76 | 40 | 52.6% |

Successes:

In last month’s report I wrote about a developmentally delayed adult that had become dependent on EMS services after her parent and primary caretaker died. In March, this individual used SFFD ambulances 36 times and on 14 occasions used more than one ambulance per day. In April she became an EMS-6 managed client and was connected to her extended family and a program specially designed to assist people who are developmentally delayed. She has had zero 911 calls in the previous three weeks.

An elderly, previously frequent 911 utilizer recently reappeared in San Francisco. This individual first began using emergency services in 2020, when he used Department ambulances 7 times. In 2021 his utilization increased to 43. After stabilization at a skilled nursing facility in late 2021, he was placed in a board and care in a neighboring county. In April, he returned to San Francisco and when an ambulance responded to him EMS-6 rapidly intervened, contacted his care team, and advocated for placement. He is admitted and is currently in the process of finding a more suitable board and care facility.

Street Crisis Response Team (SCRT) Report, 4/1/22 to 4/30/22

Total Calls for Service: 758
Average Response Time: 16.66 minutes
Average on Scene Time: 31.61 minutes

Disposition All Calls for Service

| | | |
|--|------------|--------|
| Non-ambulance transport to non-ED resource | 30 | 3.96% |
| Remained in community | 194 | 25.59% |
| Ambulance transport to ED | 42 | 5.54% |
| Walked away | 24 | 3.17% |
| Information exchange | 4 | 0.53% |
| Unable to locate | 447 | 58.97% |
| Other | 17 | 2.24% |
| Total | 758 | |

Disposition Engaged Individuals Only

| | | |
|--|------------|--------|
| Non-ambulance transport to non-ED resource | 30 | 10.45% |
| Remained in community | 194 | 67.60% |
| Ambulance transport to ED | 42 | 14.63% |
| Other | 21 | 7.32% |
| Total | 287 | |

5150

| Type | Quantity | Percentage |
|------------------|-----------|------------|
| Grave disability | 8 | 72.73% |
| Self-harm | 1 | 9.09% |
| Harm to others | 2 | 18.18% |
| Total | 11 | |

Police Requested

| | | |
|--------------|------------|--------|
| No | 783 | 99.24% |
| Yes | 6 | 0.76 % |
| Total | 789 | |

Police Requested Reason

| | | |
|---|----------|--------|
| Immediate danger to personnel or public | 5 | 83.33% |
| Passive resistance while on 5150 | 0 | |
| Active resistance | 0 | |
| Traffic control | 1 | 16.67% |
| Other | 0 | |
| Total | 6 | |

Street Overdose Response Team (SORT) Report, 4/1/22 to 4/30/22

| | |
|---|-----|
| Total Encounters: | 136 |
| Total encounters with confirmed OD: | 54 |
| Buprenorphine starts: | 3 |
| Clients that accepted harm reduction supplies: | 21 |
| Clients that accepted Project FRIEND Narcan Rescue Kit: | 29 |

SORT Highlights:

As mentioned in last month’s report, the Department has been approved for a state EMSA pilot program to administer buprenorphine to opioid overdose survivors. Evidence shows that buprenorphine assisted treatment greatly reduces the risk of accidental overdose death. The 8-hour training will be conducted on May 18 and May 25 and will be for all community paramedics. Still to be resolved is whether there are regulatory barriers to have pharmacists at Poison Control—as proscribed in the pilot program—provide dosing and verify inclusion criteria. If this is not addressed in a satisfactory or timely way, we will consider other alternatives for medical control

Street Wellness Response Team (SWRT) Report, 4/1/22 to 4/30/22

| | |
|---------------------------------------|-----|
| Total Encounters: | 294 |
| Average Encounters per 12-hour shift: | 10 |

Call Origin:

| Type | Quantity | Percentage |
|-------------------------------|------------|------------|
| Onview | 237 | 80.61% |
| Self-assigned to 911 incident | 61 | 19.38% |
| Total | 294 | |

Disposition of Calls for Service

| | | |
|-------------------------|------------|--------|
| Remained in community | 223 | 75.85% |
| Non-emergency transport | 49 | 16.67% |
| Ambulance transport | 14 | 4.76% |
| Unable to locate | 3 | 1.02% |
| Other | 5 | 1.70% |
| Total | 294 | |

Destination of Non-Emergency Transport

| | | |
|---------------------------------|-----------|--------|
| Shelter | 30 | 61.22% |
| Community Clinic | 10 | 20.41% |
| Sobering Center | 3 | 6.12% |
| Linkage Center | 2 | 4.08% |
| Urgent or Primary Care | 1 | 2.04% |
| Substance Use Treatment Program | 1 | 2.04% |
| Hygiene Center | 1 | 2.04% |
| Other | 1 | 2.04% |
| Total | 49 | |

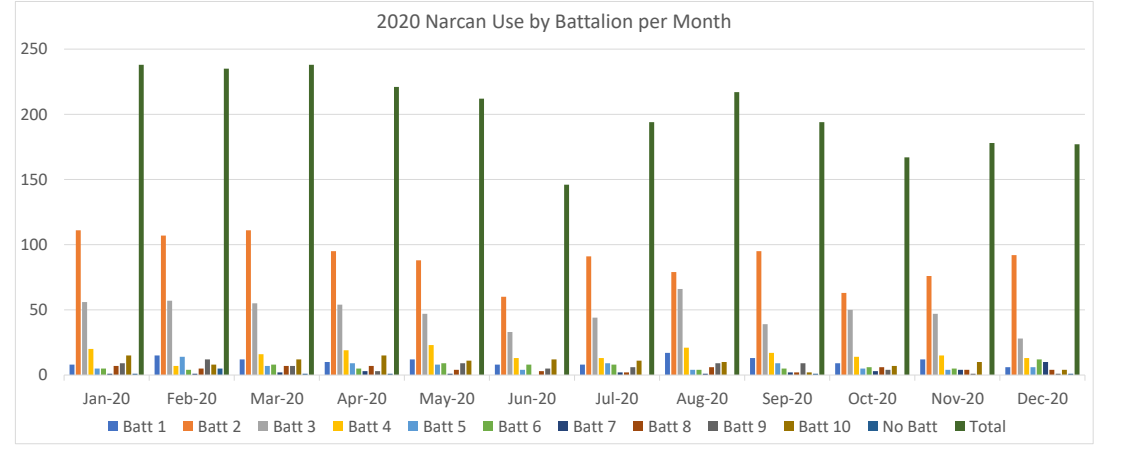
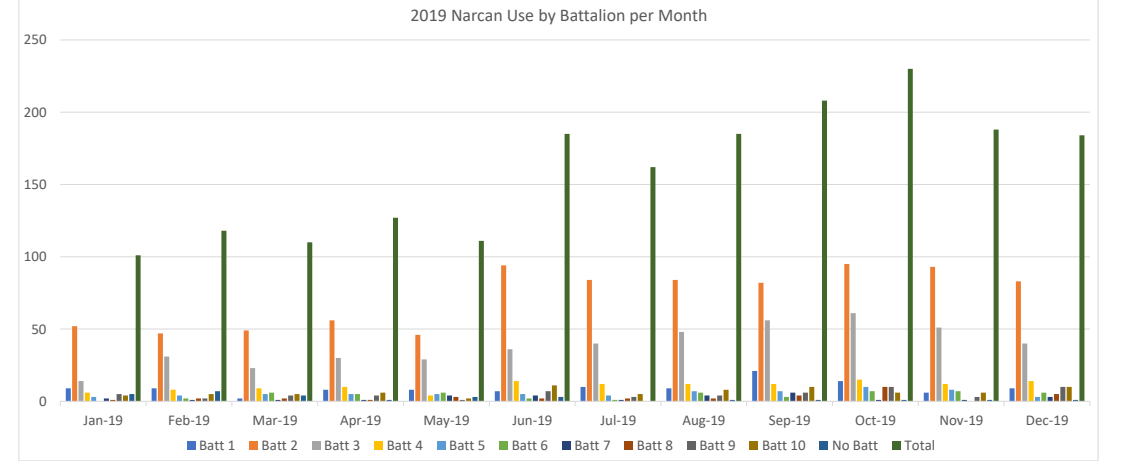
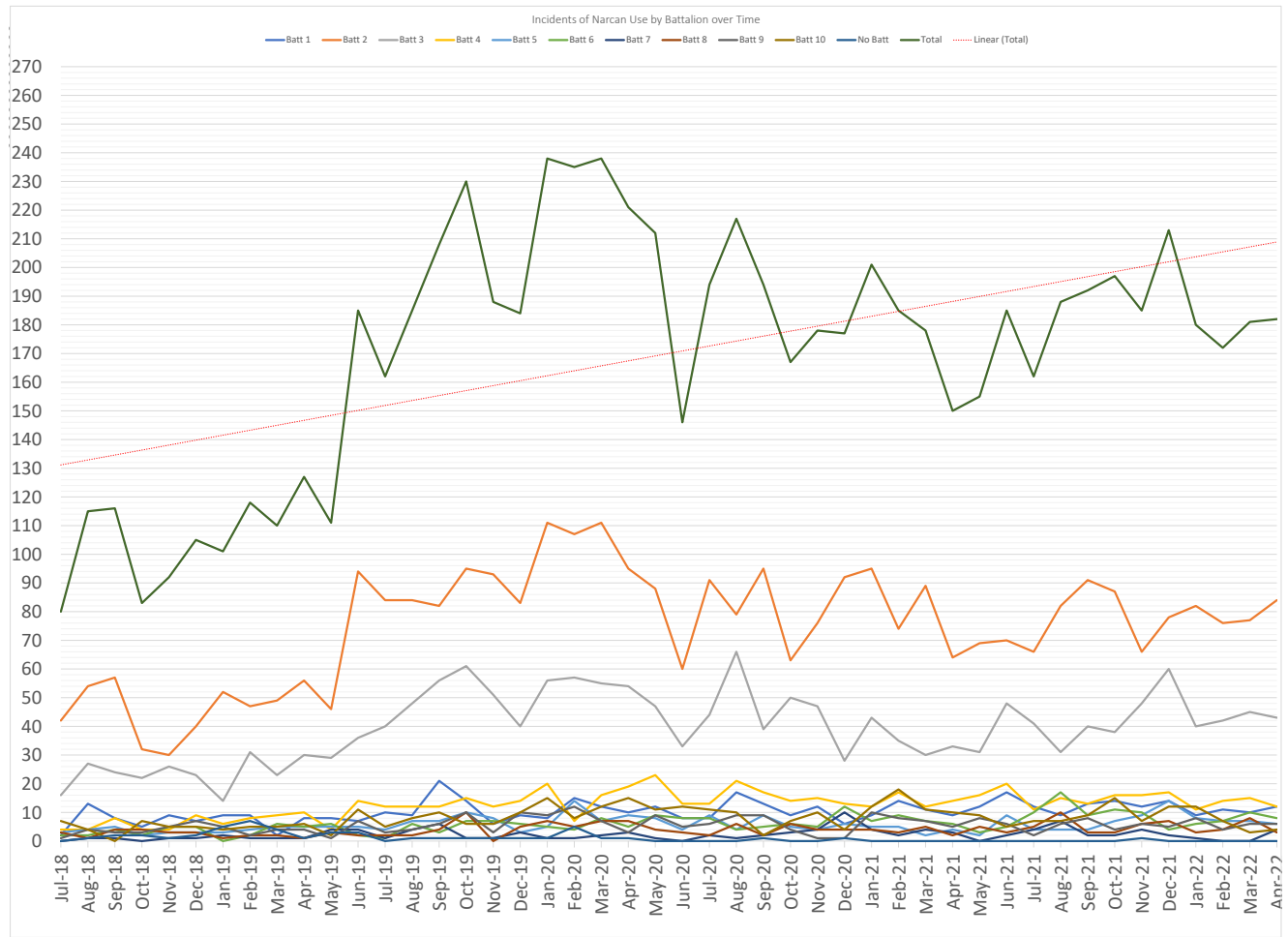
Successes:

Cumulative data since inception on January 24, 2022, show that one out of every four Street Wellness Response Team engagements result in someone being physically transported from the street to emergency shelter, medical care, or other appropriate care destinations.

It was reported in last month’s report that the Street Wellness Response Team repeatedly engaged a 69-year-old man with a history of mental illness and substance use disorder that had been experiencing homelessness on City streets since at least 2019. This individual, a frequent user of emergency resources, was often found sleeping on steaming sewer grates. On one occasion, he received severe steam burns that required him to be hospitalized. On another occasion he had several ribs broken after being assaulted in the street. After earning his trust, the Street Wellness Response Team first connected him to an emergency stabilization room. Since then, he has moved into permanent supportive housing. In addition, his assigned case management team, who had previously been unable to locate him, is now in contact with him.

Narcan Administration

| | Jul-18 | Aug-18 | Sep-18 | Oct-18 | Nov-18 | Dec-18 | Jan-19 | Feb-19 | Mar-19 | Apr-19 | May-19 | Jun-19 | Jul-19 | Aug-19 | Sep-19 | Oct-19 | Nov-19 | Dec-19 | Jan-20 | Feb-20 | Mar-20 | Apr-20 | May-20 | Jun-20 | Jul-20 | Aug-20 | Sep-20 | Oct-20 | Nov-20 | Dec-20 | Jan-21 | Feb-21 | Mar-21 | Apr-21 | May-21 | Jun-21 | Jul-21 | Aug-21 | Sep-21 | Oct-21 | Nov-21 | Dec-21 | Jan-22 | Feb-22 | Mar-22 | Apr-22 | | | |
|------------------------|-----------|--------|--------|--------|--------|--------|--------|--------|--------|--------|--------|--------|--------|--------|--------|--------|--------|--------|--------|--------|--------|--------|--------|--------|--------|--------|--------|--------|--------|--------|--------|--------|--------|--------|--------|--------|--------|--------|--------|--------|--------|--------|--------|--------|--------|--------|--------|--------|-----|
| Incidents | Batt 1 | 2 | 13 | 8 | 5 | 9 | 7 | 9 | 9 | 2 | 8 | 8 | 7 | 10 | 9 | 21 | 14 | 6 | 9 | 8 | 15 | 12 | 10 | 12 | 8 | 8 | 17 | 13 | 9 | 12 | 6 | 9 | 14 | 11 | 9 | 12 | 17 | 12 | 9 | 13 | 14 | 12 | 14 | 9 | 11 | 10 | 12 | | |
| | Batt 2 | 42 | 54 | 57 | 32 | 30 | 40 | 52 | 47 | 49 | 56 | 46 | 94 | 84 | 84 | 82 | 95 | 93 | 83 | 111 | 107 | 111 | 95 | 88 | 60 | 91 | 79 | 95 | 63 | 76 | 92 | 95 | 74 | 89 | 64 | 69 | 70 | 66 | 82 | 91 | 87 | 66 | 78 | 82 | 76 | 77 | 84 | | |
| | Batt 3 | 16 | 27 | 24 | 22 | 26 | 23 | 14 | 31 | 23 | 30 | 29 | 36 | 40 | 48 | 56 | 61 | 51 | 40 | 56 | 57 | 55 | 54 | 47 | 33 | 44 | 66 | 39 | 50 | 47 | 28 | 43 | 35 | 30 | 33 | 31 | 48 | 41 | 31 | 40 | 38 | 48 | 60 | 40 | 42 | 45 | 43 | | |
| | Batt 4 | 4 | 4 | 8 | 4 | 4 | 9 | 6 | 8 | 9 | 10 | 4 | 14 | 12 | 12 | 12 | 15 | 12 | 14 | 20 | 7 | 16 | 19 | 23 | 13 | 13 | 21 | 17 | 14 | 15 | 13 | 12 | 17 | 12 | 14 | 16 | 20 | 11 | 15 | 13 | 16 | 16 | 17 | 11 | 14 | 15 | 12 | | |
| | Batt 5 | 3 | 4 | 5 | 2 | 3 | 3 | 4 | 5 | 5 | 5 | 5 | 4 | 7 | 7 | 10 | 6 | 3 | 5 | 14 | 7 | 9 | 8 | 4 | 9 | 4 | 5 | 4 | 6 | 5 | 4 | 6 | 5 | 4 | 2 | 9 | 4 | 4 | 4 | 7 | 9 | 14 | 8 | 7 | 6 | 6 | | | |
| | Batt 6 | 2 | 2 | 4 | 2 | 5 | 5 | 0 | 2 | 6 | 5 | 6 | 2 | 1 | 6 | 3 | 7 | 7 | 6 | 5 | 4 | 8 | 5 | 9 | 8 | 8 | 4 | 5 | 6 | 5 | 12 | 7 | 9 | 7 | 6 | 3 | 5 | 10 | 17 | 9 | 11 | 10 | 4 | 6 | 7 | 10 | 8 | | |
| | Batt 7 | 0 | 1 | 1 | 0 | 1 | 1 | 2 | 1 | 1 | 1 | 4 | 4 | 1 | 4 | 6 | 1 | 1 | 3 | 1 | 1 | 2 | 3 | 1 | 0 | 2 | 1 | 2 | 3 | 4 | 10 | 4 | 2 | 4 | 3 | 0 | 2 | 4 | 7 | 2 | 2 | 4 | 2 | 1 | 0 | 4 | 4 | | |
| | Batt 8 | 3 | 1 | 4 | 4 | 3 | 3 | 1 | 2 | 2 | 1 | 3 | 2 | 2 | 2 | 4 | 10 | 0 | 5 | 7 | 5 | 7 | 7 | 4 | 3 | 2 | 6 | 2 | 6 | 4 | 4 | 4 | 4 | 3 | 5 | 2 | 5 | 3 | 5 | 10 | 3 | 3 | 6 | 7 | 3 | 4 | 8 | 3 | |
| | Batt 9 | 1 | 4 | 3 | 3 | 5 | 7 | 5 | 2 | 4 | 1 | 7 | 3 | 4 | 6 | 10 | 3 | 10 | 9 | 12 | 7 | 3 | 9 | 5 | 6 | 9 | 9 | 4 | 1 | 10 | 8 | 7 | 5 | 8 | 6 | 2 | 6 | 8 | 4 | 6 | 5 | 8 | 4 | 6 | 6 | 6 | 6 | | |
| | Batt 10 | 7 | 4 | 0 | 7 | 5 | 5 | 4 | 5 | 5 | 6 | 2 | 11 | 5 | 8 | 10 | 6 | 10 | 15 | 8 | 12 | 15 | 11 | 12 | 11 | 10 | 2 | 7 | 10 | 4 | 12 | 18 | 11 | 10 | 9 | 5 | 7 | 9 | 12 | 7 | 12 | 7 | 3 | 3 | 4 | 4 | | | |
| | No Batt | 0 | 1 | 2 | 2 | 1 | 2 | 5 | 7 | 4 | 1 | 3 | 3 | 0 | 1 | 1 | 1 | 1 | 1 | 1 | 5 | 1 | 1 | 0 | 0 | 0 | 0 | 1 | 0 | 0 | 1 | 0 | 0 | 0 | 0 | 0 | 0 | 0 | 0 | 0 | 0 | 1 | 0 | 0 | 0 | 0 | 0 | 0 | 0 |
| | Total | 80 | 115 | 116 | 83 | 92 | 105 | 101 | 118 | 110 | 127 | 111 | 185 | 162 | 185 | 208 | 230 | 188 | 184 | 238 | 235 | 238 | 221 | 212 | 146 | 194 | 217 | 194 | 167 | 178 | 177 | 201 | 185 | 178 | 150 | 155 | 185 | 162 | 188 | 192 | 197 | 185 | 213 | 180 | 172 | 181 | 182 | | |
| Financing Homelessness | % YES | N/A | N/A | N/A | N/A | N/A | N/A | N/A | N/A | N/A | N/A | N/A | N/A | N/A | N/A | N/A | N/A | N/A | N/A | N/A | N/A | N/A | N/A | N/A | N/A | N/A | N/A | 102 | 80 | 73 | 83 | 71 | 81 | 62 | 66 | 53 | 53 | 56 | 57 | 72 | 60 | 65 | 64 | 74 | 70 | 63 | 77 | 62 | |
| | % NO | N/A | N/A | N/A | N/A | N/A | N/A | N/A | N/A | N/A | N/A | N/A | N/A | N/A | N/A | N/A | N/A | N/A | N/A | N/A | N/A | N/A | N/A | N/A | N/A | N/A | N/A | 47.00% | 41.24% | 43.71% | 46.63% | 40.11% | 40.30% | 33.51% | 37.08% | 35.33% | 34.19% | 30.27% | 35.19% | 38.30% | 31.25% | 32.99% | 34.59% | 34.74% | 38.89% | 36.63% | 42.54% | 34.07% | |
| | % Unknown | N/A | N/A | N/A | N/A | N/A | N/A | N/A | N/A | N/A | N/A | N/A | N/A | N/A | N/A | N/A | N/A | N/A | N/A | N/A | N/A | N/A | N/A | N/A | N/A | N/A | N/A | 38 | 40 | 34 | 37 | 29 | 39 | 51 | 35 | 31 | 31 | 38 | 37 | 35 | 41 | 41 | 39 | 55 | 38 | 40 | 39 | 45 | |
| Reliable Home Address | % No | 49 | 66 | 69 | 45 | 53 | 64 | 59 | 72 | 69 | 81 | 58 | 119 | 105 | 117 | 139 | 147 | 122 | 147 | 146 | 146 | 151 | 144 | 91 | 120 | 13 | N/A | N/A | N/A | N/A | N/A | N/A | N/A | N/A | N/A | N/A | N/A | N/A | N/A | N/A | N/A | N/A | N/A | N/A | N/A | N/A | N/A | N/A | N/A |
| | % YES | 61.25% | 57.39% | 59.48% | 54.22% | 57.61% | 60.95% | 58.42% | 61.02% | 62.73% | 63.78% | 52.25% | 64.32% | ### | 63.24% | 66.83% | 63.91% | 64.89% | 68.30% | 61.76% | 62.13% | 61.34% | 68.33% | 67.92% | 62.33% | 61.86% | 5.99% | N/A | N/A | N/A | N/A | N/A | N/A | N/A | N/A | N/A | N/A | N/A | N/A | N/A | N/A | N/A | N/A | N/A | N/A | N/A | N/A | N/A | N/A |



The background of the slide features a large, semi-transparent seal of the U.S. Department of Justice, Bureau of Fire Prevention and Investigation. The seal is circular and contains an eagle with spread wings at the top. Below the eagle is a shield with a landscape scene. On either side of the shield are two figures: a man in a hat on the left and a man in a uniform on the right. At the bottom of the seal is a banner with the Latin motto "EN GUERRA ORO EN PAZ FIERRO". The seal is rendered in a light blue and white color scheme, set against a dark grey background with a red laurel wreath border.

Deputy Chief of Operations
Robert Postel

Report to the Commission

Bureau of Fire Prevention
and Investigation

Division of Fire Prevention and Investigation
 Division Update – April 1 to April 30, 2022
Fire Marshal Kenneth Cofflin

San Francisco Fire Department
 Division of Fire Prevention and Investigation
 Acronyms/Abbreviations/Terms

| Term / Acronym | Definition |
|------------------|--|
| BFP | Bureau of Fire Prevention |
| AFM | Assistant Fire Marshal |
| NOV | Notice of Violation |
| DPH | Dept. of Public Health |
| DPW | Dept. of Public Works |
| DBI | Dept. of Building Inspection |
| ACE | Accelerated Code Enforcement |
| FEP | Facility Emergency Plan (High-Rise Bldg.) |
| EVAC | Evacuation Plan |
| DSS | Depot. Of Social Services |
| SRO | Single Room Occupancy |
| R-2 | Residential Building (Apts. or Condos, 3+ units) |
| ERRCS | Emergency Responder Radio Coverage System |
| R1/R2 Inspection | Residential Building Inspection Program |
| CN | Canceled |
| OR | Order of Recission (rescind the order to Abate) |
| ADU | Accessory Dwelling Unit |
| TASC | Transportation Advisory Safety Committee |
| OTC | Over The Counter |

BFP Head Quarters Update: High-Rise, Schools, Residential Care Facilities, Fire Complaints, Community Outreach, Training- AFM Bowden
 Facilities, Fire Complaints, Community Outreach, Training – A/AFM Tse

Inspections Completed April 2022:

| Types of Inspection /Activity | Number | Hours |
|--------------------------------------|---------------|--------------|
| NOV | 107 | 75.3 |
| Complaints | 235 | 154.6 |
| Referrals (DPH Non-Haz., DPW) | 26 | 13.7 |
| Referrals (DPH Haz., EC) | 1 | 1.0 |
| Referrals (SFPD) | 17 | 13.0 |
| DBI | 572 | 521.3 |
| Fire Alarm Inspection | | |
| Greater Alarm Inspection | | |
| Permit Annual | 321 | 240.6 |
| Permit Approvals | 63 | 52.9 |
| Permit Follow-Up | 4 | 9.0 |
| Port Permit Annuals | 5 | 4.5 |
| Port Permit Approvals | 3 | 2.5 |

| Types of Inspection /Activity | Number | Hours |
|---|---------------|---------------|
| Port Pipeline Permits | 4 | 4.0 |
| Event Plan Review (Non-DBI) | 2 | 1.0 |
| Place of Assembly Detail | 7 | 58.5 |
| Administrative Citation | | |
| Hearing Re-Inspection | 31 | 19.3 |
| City Attorney Referral/ACE | 1 | 1.5 |
| Order to Abate Re-inspection | 2 | 1.0 |
| High-Rise Annuals | 54 | 150.9 |
| High-Rise Follow-Up | | |
| FEP Review, EVAC Plan Review & High-Rise Report Writing | 7 | 14.0 |
| School Annuals | | |
| School Inspection Follow-Up | | |
| Day Care | | |
| DPH-CCSF (Aids Clinic, Mental Health) | | |
| DSS (Community Care Licensing, Alcohol/Drugs) | | |
| Onsite Consultation | 30 | 32.1 |
| OSHPOD Referral | | |
| Other Referrals (Dept. of Corrections, Community Behavioral Health Services, Licensing) | | |
| Public Education/Community Outreach | | |
| Sprinkler Ordinance | | |
| Airport Fit Test | | |
| Airport Truck Fueler Hydrant Inspection | | |
| ERRCS Upgrade | | |
| Shared Spaces (Temporary) | 16 | 4.1 |
| Fire Clearance Request | 20 | 20.4 |
| Follow-Up Inspection | 28 | 17.8 |
| Initial Inspection | 23 | 21.3 |
| SRO Fire Prevention Workshop | | |
| Tank Installation | | |
| UL Certification | | |
| Traccess Installation/Maintenance | 8 | 5.0 |
| File Research | 14 | 15.5 |
| Others (Fire Investigation, Special System, Technical Construction Inspection, No Time Charged, Special System, Etc.) | 10 | 0.8 |
| PSD Counter | 43 | 153.0 |
| Administration (Email, Voicemail, Data Entry, etc.) | 669 | 988.0 |
| Code Research | 43 | 64.0 |
| Car Service | 29 | 24.3 |
| Training | 76 | 138.8 |
| Total | 2471 | 2823.7 |

Annual High-Rise Inspections

| | |
|--|-------|
| Total Annual Permit Inspections | 636 |
| Completed | 487 |
| Open | 30 |
| Pending | 119 |
| % Completed | 81.3% |
| % Target Completion (8.3% per month) Fiscal year 21-22 | 83.3% |

Annual Port Inspections

| | |
|---|-----|
| Total Annual Permit Inspections | 104 |
| Completed | 65 |
| Open | 8 |
| Pending | 31 |
| % Completed (by 4/26/22) | 70% |
| % Target Completion (8.3% per month) Fiscal year (by 4/30/22) | 83% |

Annual School Inspections

| | |
|----------------------------------|------|
| Total Annual School Inspections | 251 |
| Completed | 251 |
| Open | 0 |
| Pending | 0 |
| % Completed by 1/28/22 | 100% |
| % Target Completion by Dec. 2021 | 100% |

Fire Complaints:

| | |
|---|------|
| Total Overall Open Complaints (as of April 26, 2022): | 1290 |
| Overall Open Complaints (R2 Inspections): | 616 |
| Overall Open Complaints (Other Sources): | 674 |
| Total Number of Complaints Received (April 28, 2022): | 264 |
| Total Number of Complaints Received Through R2 Inspections: | 148 |
| Total Number of complaints Received Through Other Sources: | 116 |
| Total Number of Complaints Closed (April 27, 2022): | 228 |
| Number of Complaints Closed (R2 Inspections): | 106 |
| Number of Complaints Closed (Other Sources): | 122 |

Closed Complaints by Disposition (April 2022):

| | CC | CI | DC | NA | NJ | NM | PM | RB | RE | RP | VI | Total |
|---------|-----|----|----|----|----|----|----|----|----|----|-----|-------|
| 2022/04 | 109 | | 2 | 7 | | 46 | | 2 | 1 | | 61 | 228 |
| 2022/03 | 182 | | 15 | 1 | 2 | 53 | | 5 | 4 | | 62 | 324 |
| 2022/02 | 166 | 1 | 3 | 1 | | 73 | | 2 | | | 57 | 303 |
| 2022/01 | 114 | | 9 | | 1 | 39 | | 1 | | | 60 | 224 |
| 2021/12 | 131 | | 17 | 1 | | 53 | | 3 | | 1 | 109 | 315 |
| 2021/11 | 138 | | 11 | 2 | | 61 | | 1 | | | 162 | 375 |
| 2021/10 | 122 | | 2 | | | 61 | | 1 | 1 | | 112 | 299 |

| | | | | | | | | | | | | |
|---------|-----|--|----|---|---|----|---|---|----|--|-----|-----|
| 2021/09 | 64 | | 2 | 1 | | 33 | | 1 | | | 100 | 201 |
| 2021/08 | 61 | | 11 | | | 31 | 1 | | 18 | | 81 | 203 |
| 2021/07 | 95 | | 7 | 1 | 2 | 40 | | 1 | 1 | | 78 | 225 |
| 2021/06 | 60 | | 2 | | 3 | 23 | | 4 | 4 | | 80 | 176 |
| 2021/05 | 49 | | 1 | | | 15 | | | | | 72 | 137 |
| 2021/04 | 93 | | 2 | | 1 | 26 | | 1 | 2 | | 217 | 342 |
| 2021/03 | 108 | | 5 | | 1 | 37 | | 1 | 1 | | 68 | 221 |
| 2021/02 | 78 | | 8 | | 1 | 40 | | 3 | 2 | | 86 | 218 |

CC: Condition Corrected; DC: Duplicate Complaint; NA: Non-Applicable; NJ: No Jurisdiction; NM: No Merit; PM: Night-Time Inspection; RB: Referred to DBI; RE: Referred to EID; RP: Referred to DPH; VI: NOV Issued

Total Number of Complaint ITEMS (April 2022): 298

Total Number of Complaint ITEMS Open (April 2022): 134

Total Number of Complaint ITEMS Closed (April 2022): 164

Types of Complaints Items (April 2022):

| Description of Complaint | Open | Closed | Total |
|-------------------------------|------------|------------|------------|
| Alarm Systems | 70 | 55 | 125 |
| Blocked Exits | 10 | 22 | 32 |
| Combustible Materials | 4 | 11 | 15 |
| Electrical Systems | 2 | 8 | 10 |
| Elevators Not Working | 3 | 2 | 5 |
| Exit Maintenance | 16 | 24 | 40 |
| Extinguishers | 47 | 39 | 86 |
| Fire Escape | 7 | 8 | 15 |
| General Hazardous Materials | 3 | 6 | 9 |
| Hoarding | 1 | 2 | 3 |
| Illegal Occupancy | 1 | | 1 |
| Multiple Fire Code Violations | 2 | 46 | 48 |
| Open Vacant Building | | | |
| Operating Without A Permit | 3 | 4 | 7 |
| Overcrowded Place Of Assembly | | | |
| Refused Hood + Duct Service | | | |
| Roof Access | 1 | | 1 |
| Shared Spaces | 5 | 5 | 10 |
| Sprinkler/Standpipe Systems | 37 | 25 | 62 |
| Street Numbering | 2 | 9 | 11 |
| UL Cert Verification | | | |
| Unapproved Place Of Assembly | | | |
| Uncategorized Complaint | 13 | 11 | 24 |
| Weeds And Grass | | 3 | 3 |
| Total | 227 | 280 | 507 |

Number of Open Violations (NOV) Before April 2022: 499
 New Violations issued during the month of April 2022: 54
 Violations resolved during the month of April 2022: 72
 NOVs as of 3/31/2022: 481
 Open High-Rise NOVs: 199
 Pending High-Rise NOVs: 110
 Open School NOVs: 26
 Pending School NOVs: 3

Administrative Hearings:

| Hearing Date | Violation ID | Decision | Status | Comments |
|-----------------|----------------------|-----------------|----------------|--------------------|
| 3/31/2022 | 2104-0090 | OR | C | - |
| 3/31/2022 | 2110-0054 | OR | C | - |
| 3/31/2022 | 2105-0095 | OR | C | - |
| 3/31/2022 | 2104-0134 | OA | O | 56-Day OA |
| 3/31/2022 | 2105-0071 | OA | O | 56-Day OA |
| 3/31/2022 | 2106-0001 | CN | O | - |
| 4/14/2022 | 2104-0113 | OA | O | 56-Day OA |
| 4/14/2022 | 2104-0161 | CN | O | 70-Day Continuance |
| 4/14/2022 | 2111-0421 | CN | O | 70-Day Continuance |
| 4/14/2022 | 2110-0338 | OR | C | - |
| 4/14/2022 | 2102-0033 | CN | O | 56-Day Continuance |
| 4/14/2022 | 2107-0030 | CN | O | 56-Day Continuance |
| 4/14/2022 | 2111-0076 | OR | C | - |
| No. of Hearings | Orders of Recissions | Cases Continued | Order to Abate | Order to Vacate |
| 2 | 5 | 5 | 7 | 0 |

Sunshine/Public Record Requests 2021

| | NEXT REQUEST | NON-NEXT REQUEST | |
|--------------|--------------|------------------|------------|
| MONTH | # Requests | # Requests | TOTAL |
| January | 44 | 3 | 47 |
| February | 75 | 1 | 76 |
| March | 82 | 5 | 87 |
| April | 51 | 5 | 56 |
| Total | 252 | 14 | 266 |

Community Outreach Education Events

| Date | Event Name | Address | Number of Community Contacts | Number of Volunteers |
|--------------------|--|------------------------------------|------------------------------|----------------------|
| 4/9/22 to 4/10/22 | 55 th Annual Cherry Blossom Festival | Webster & Post streets | 500 | 1 |
| 4/16/22 to 4/17/22 | 55 th Annual Cherry Blossom Festival | Webster & Post streets | 500 | 6 |
| 4/21/22 | Stop the Bleed Presentation | Pier 96 | 18 | 2 |
| 4/21/22 | FSIH Workshop Zoom for Community Living Campaign | Zoom | 26 | 1 |
| 4/23/22 | SF Chinatown Springtime Festival | Waverly Place at Sacramento Street | 500 | 1 |
| 4/30/22 | One Treasure Island Spring Fling/Wellness Fair | Gateview/Northpoint | 300 | 2 |

Permit Application (April 2022)

| | |
|-------------------------------|-----|
| Total Permits Issued | 265 |
| Number of Operational Permits | 24 |
| Number of Temporary Permits | 241 |

Types of Operational Permits Issued (April 2022)

| Operational Permit Description | Number |
|--|---------------|
| Aboveground Stationary Tank, Storage & Use | |
| Application of Flammable/Combustible Finishes | |
| Battery System, Storage & Use | |
| Cannabis & Plant Extraction System | |
| Combustible Dust-Producing Operations | |
| Combustible Materials, Miscellaneous, Storage, Handling | |
| Compressed Gas, Fueling Station, Operation | |
| Compressed Gas, Storage, Use, & Handling | 1 |
| Cryogenic Fluids, Storage & Use | |
| Dry Cleaning Plant, Operation | |
| Firefighter Air System, Maintenance, Testing | |
| Flammable/Combustible Liquid, Portable Containers | 2 |
| Flammable/Combustible Finishes, Spray Painting Application | |
| Fruit & Crop Ripening Operation | |
| Hazardous Materials, Store, Transport, Dispense, Use, Handle | |
| High-Piled Storage | |
| Hot work Operations, Weld, Cut, Grind, Braze, Solder | 2 |
| Hot Work Operations, Jeweler, Grind, Braze, Solder | |
| Hot Work Operations, Roofer, Open Flame Device, Conduct | |
| Industrial Oven, Baking/Drying Operation | |
| Limited Application of Flammable/Combustible Finishes | |
| Liquefied Petroleum Gas, Mobile Caterer (Food Truck) | 2 |
| Liquefied Petroleum Gas, Portable Cylinders | 3 |
| Liquefied Petroleum Gas, Roofer, Storage, Use | |

| Operational Permit Description | Number |
|--|---------------|
| Liquefied Petroleum Gas, Tank, Storage, Use | |
| Mobile Fuel Dispensing | 1 |
| Motor Fuel Facility, Operation | |
| Motor Fuel Facility, Self-Service, Operation | |
| Open Flame (Sternos, Candles, BBQ) | |
| Place of Assembly Operation | 12 |
| Refrigeration Equipment Operation | 1 |
| Tires, Scrap/Tire Byproducts, Storage | |
| Underground Stationary Tank, Storage & Use | |
| Vehicle Repair Garage, Major | |
| Vehicle Repair Garage, Minor | |
| Waste Handling, Operation | |
| Total | 24 |

Total Permit Annual Inspections

| | |
|--|-------|
| Total Annual Permit Inspections | 3233 |
| Completed | 1694 |
| Open | 713 |
| Pending | 826 |
| Pending Mobile/Citywide Pending (No Fixed Address) | 115 |
| Pending Port | 41 |
| Actual Total Annual Permit Inspections (Without Fixed Address) | 3077 |
| Actual Still Pending (Without No Fixed Address) | 670 |
| % Completed | 78.2% |
| % Target Completion | 83.3% |

Permit Annual Inspections by Section (Permit)

| | |
|---------------------------------|-------|
| Total Annual Permit Inspections | 2218 |
| Completed | 1070 |
| Open | 667 |
| Pending | 481 |
| % Completed | 78.3% |
| % Target Completion | 83.3% |

Permit Annual Inspections by Section (High-Rise):

| | |
|---------------------------------|-------|
| Total Annual Permit Inspections | 794 |
| Completed | 569 |
| Open | 36 |
| Pending | 189 |
| % Completed | 76.2% |
| % Target Completion | 83.3% |

Permit Annual Inspections (Business):

| | |
|---------------------------------|-------|
| Total Annual Permit Inspections | 112 |
| Completed | 79 |
| Open | 11 |
| Pending | 22 |
| % Completed | 70.5% |
| % Target Completion | 75% |

Permit Annual Inspections by Section (Port):

| | |
|---------------------------------|-----|
| Total Annual Permit Inspections | 107 |
| Completed | 55 |
| Open | 10 |
| Pending | 41 |
| % Completed | 61% |
| % Target Completion | 83% |

Major Upcoming Events:

| | |
|----------------------------|---|
| Date: | 5/28/2022 and 5/29/22 |
| Hours: | |
| Location: | Harrison Streets between 16 th St and 24 th streets |
| Name of Event: | SF Carnaval 2022 |
| SFFD Regulated Activities: | Propane, Tents, Generators, Open Flame, Fencing, Crowd Control, Cannibus |
| SFFD Permit No.: | TBD |
| No. of Insp. Working: | 6 |

| | |
|----------------------------|---|
| Date: | 6/12/2022 |
| Hours: | 1000 – 1800 Hours |
| Location: | Haight Street between Masonic and Stanyan Street; Ashbury Street between Page and Waller Street |
| Name of Event: | Haight Ashbury Street Fair 2022 |
| SFFD Regulated Activities: | Propane, Tents, Generators, Street Closure |
| No. of Inspectors Working: | 2 |

Upcoming/Pending COE Events

| Date/Time | Event |
|-----------------------|---|
| 5/6/2022 | BDFP Safety Fair |
| 5/11/2022 | FSIH Workshop at Park Sunset Apartments |
| 5/12/2022 | SFAA Trade Show @ Fort Mason |
| 5/14/2022 – 5/15/2022 | Bay to Breakers |
| 5/21/2022 | American Red Cross Sound The Alarm |
| 5/22/2022 | Sunday Streets Bayview |
| 6/12/2022 | Haight Street Fair |
| 6/18/2022 | North Beach Festival |

| | |
|-----------------------|---|
| 6/25/2022 – 6/26/2022 | Pride |
| 7/10/2022 | Sunday Streets Mission |
| 8/2/2022 | National Night Out |
| 8/6/2022 – 8/7/2022 | Nihonmachi Festival |
| 8/12/2022 – 8/14/2022 | Outside Lands |
| 8/21/2022 | Sunday Streets SOMA |
| 8/27/2022 – 8/29/2022 | Autumn Moon Festival |
| 9/18/2022 | Sunday Streets Western Addition |
| 10/2/2022 | Castro Street Fair |
| 10/7/2022 – 10/9/2022 | Fleet Week |
| 10/16/2022 | Phoenix Day |
| 10/3/2022 – 10/9/2022 | Fire Prevention Week |
| Pending | FSIH Workshop at Chinatown Community Developmental Center |
| Pending | FSIH Workshop at Jelani Family Residential Step-Down |
| Pending | FSIH Workshop at Mercy Housing |

San Francisco Fire Department Bureau of Fire Investigations

Summary Report From 03/30/2022 To 04/27/2022

| | | YTD 07/01/2021 To 04/27/2022 | | | 03/30/2022 To 04/27/2022 | | |
|------------------------------|-----------------------|------------------------------|---------------------|--------------------|--------------------------|--------------------|--------------------|
| | | Count | Property Loss | Contents Loss | Count | Property Loss | Contents Loss |
| STRUCTURE FIRES | ACCIDENTAL | 19 | \$8,465,500 | \$830,150 | 0 | | |
| | INCENDIARY | 35 | \$2,646,100 | \$548,195 | 4 | \$115,600 | \$5,200 |
| | UNDER INVESTIGATION | 5 | \$2,576,500 | \$441,000 | 3 | \$1,700,000 | \$190,000 |
| | UNDETERMINED | 25 | \$7,888,101 | \$3,118,600 | 5 | \$4,580,000 | \$1,508,000 |
| STRUCTURE FIRES TOTAL | | 84 | \$21,576,201 | \$4,937,945 | 12 | \$6,395,600 | \$1,703,200 |
| VEHICLE FIRES | ACCIDENTAL | 4 | \$329,867 | \$25,000 | 0 | | |
| | INCENDIARY | 41 | \$385,591 | \$1,000 | 2 | \$25,000 | |
| | UNDER INVESTIGATION | 2 | | | 0 | | |
| | UNDETERMINED | 36 | \$282,045 | | 3 | \$27,200 | |
| VEHICLE FIRES TOTAL | | 83 | \$997,503 | \$26,000 | 5 | \$52,200 | |
| OTHER INCIDENTS | | 102 | \$510,920 | \$51,590 | 8 | \$71,200 | \$40,100 |
| STRUCTURE FIRES | COMMERCIAL | 36 | \$5,641,500 | \$1,885,800 | 4 | \$220,000 | \$42,000 |
| | RESIDENTIAL | 48 | \$15,925,100 | \$3,052,145 | 8 | \$6,175,600 | \$1,661,200 |
| STRUCTURE FIRES TOTAL | | 84 | \$21,566,600 | \$4,937,945 | 12 | \$6,395,600 | \$1,703,200 |
| GREATER ALARMS | 2ND ALARMS | 6 | | | 1 | | |
| | 3RD ALARMS | 3 | | | 1 | | |
| | 4TH ALARMS | 0 | | | 0 | | |
| | 5TH ALARMS | 0 | | | 0 | | |
| GREATER ALARMS TOTAL | | 9 | | | 2 | | |
| OTHER | ARRESTS | 33 | | | 2 | | |
| | DEATHS | 4 | | | 0 | | |
| | INJURIES | 30 | | | 0 | | |
| | JUVENILE FIRE SETTERS | 0 | | | 0 | | |
| | SUBPOENAS REQUESTED | 240 | | | 20 | | |

04/28/2022

Plan Check and Operational Permits: Assistant Fire Marshal Harold
 Fire Plan Check Section Update:

| | | |
|--|---|----------------------------|
| Permit applications submitted (permits approved): | April '22 706 (637) | March. '22 934 (846) |
| Summary: | | |
| Total Plans in Fire Review Report: | 888 | 877 |
| No. of Plans reviewed but awaiting responses ("ON HOLD"): | 749 | 773 |
| No. of Plans waiting for review: | 139 | 104 |
| Water flow/ Record Analysis | 74/37 | 57/23 |

Plan Check (April 2022)

| Types of Inspection/Activity | Number | Hours |
|-------------------------------------|------------|---------------|
| Plan Check Pre-App Meeting | 29 | 60.3 |
| Plan Check Preliminary/Consultation | 11 | 11.0 |
| Plan Check Review – DBI Referral | | |
| Plan Check Public Assembly | | |
| Plan Review | 496 | 650.4 |
| Plan Review/OTC | 347 | 223.3 |
| Plan Review Re-Check | 25 | 36.5 |
| Water Flow Street Test | 7 | 23.0 |
| Water System Flow Test | 27 | 49.6 |
| Total | 942 | 1054.1 |

Large Community Development Projects, ADU, SFO: AFM Russell

The horizontal design review includes review of street maps and site plans for Fire Department vehicle access (to project site), access to water supplies (LPWSS), and building access.

Community Development: Vertical & Horizontal Design. Mayor’s Office of Housing and Community Development (MOHCD) and 100% Affordable Housing- April 2022

- **201905170931** YBI -4Y -37 Meadow Drive Building 23 Arch/MEP- Comments submitted.
- **201905170929** YBI-4Y-35 Meadow Drive Building 21- Arch/MEP- Comments submitted.
- **202203220578** -301 Mission Street. Shoring permit, under review.
- **BALBOA RESVOIR-AUXILLARY WATER SUPPLY SYSTEM -MASTER PLAN-** Horizontal Design- Comments sent to DPW
- **Stonestown project-** Horizontal Design- Reviewing Street Improvements plans.
- **Parkmerced- COA-** SFFD letter approving the streets is acceptable.
- **201912230270-** 921 Howard St., addendum 7, Plans approved.
- **201912230270-** 921 Howard St., addendum 8, metal stairs 3 &4 – Plans approved.
- **201912230270-** 921 Howard St., addendum9, Fire Sprinkler. Comments submitted.
- **202006108345-** 1801 25th St., Arch/MEP addendum 3, Rev 1. Comments submitted.
- **201602179818-** 879 La Salle Ave. Fire Protection Addendum 5. Comments submitted.
- **201912099009-** 1360 43rd Ave., Shirley Chisholm Village, addendum 2. Plans approved.
- **Potrero Power Station Phase 1 SIP-** Submittal 3- Comments submitted.
- **India Basin Park-** Street Vacation Recirculation and PUE Vacations- reviewed by SFFD.
- **201802211851-** 681 Florida St., addendum 7, Rev 4. Plans approved.

- **202203220578-** 301 Mission St. Plans approved.
- **201905170934-** 38 Meadow Dr., AMEP. Plans approved.
- **201905170935-** 36 Meadow Dr., AMEP. Plans approved.
- **201804136335 S11-** 145 Leavenworth, N/A for fire Storefront system.
- **201804136335 S8- Rev 1-** 146 Leavenworth. Plans approved.
- **202104269364S2-** 11 Innes Ct., Arch-Comments Submitted.
- **201903195605-S6-** 4840 Mission St., Fire Alarm + ECS Reviewing revision.
- **201810223762-S6-** 1 Avenue of the Palms. Solar. Reviewing revision.
- **201901039599-S12-** 1 Brady St-EBM System-reviewing Plans
- **201901039599-S6-** 1 Brady St., Fire Alarm & ECS. Comments submitted.
- **201901281440-S6-** 410 China Basin St., 2way ECS. Plans Approved.
- **20188137195-S8-** 201 Macalla Rd., EBM System. Plans Approved.
- **201808137195-S9-** 201 Macalla Rd., Solar PV. Plans Approved.
- **201807033677-** 2340 San Jose Ave., Fire Alarm & ECS. Approval waiting on Battery sys Comment.
- **201912169614-** 1 Avenue of the Palms Bldg. C-2.2- Site Permit, comments submitted.

Accessory Dwelling Units (ADU) and Unit Legalization

- Total Accessory Dwelling Units (ADU) reviewed and approved - 44 units
- Reviewed and sent comments of Accessory Dwelling Units (ADU) and Unit Legalization plans – 26 units

Pre-Application Meetings

- Attended 3 pre-applications meetings

Port, Districts, Fire Investigation, TASC: AFM Law

Port of San Francisco

| INSPECTIONS | | |
|-----------------------------------|--------------|-----------|
| Inspection Type | Number | Hours |
| Initial | 1 | 1 |
| Follow-Up | | |
| Re-Inspection (No Fee) | | |
| DBI Inspection | 11 | 13.5 |
| DPH Referral – Non HazMat | | |
| Onsite Consultation | 12 | 12.5 |
| Complaint | 1 | 1 |
| Notice of Violation (NOV) | | |
| Operational Permit Approval | | |
| Port Permits (Construction) | | |
| Permit Approval Inspection | 9 | 6.5 |
| Port Annuals (Property) | 4 | 3.5 |
| Permit Annuals (Business) | 11 | 11.5 |
| Shared Spaces | 1 | 0.5 |
| Pipeline Applications | 4 | 4 |
| TRACcess Installation/Maintenance | | |
| | Total | |
| | 54 | 54 |

Port Plan Review

| Plan Review Activity | Number | Hours |
|---|-----------|-------------|
| Plan Check Meeting (Pre-App Meeting) | 2 | 4.5 |
| Plan Check Preliminary Meeting/Consultation | 11 | 11 |
| Plan Review | 17 | 43 |
| Plan Review/Re-Check | 5 | 7 |
| Plan Review Training | 0 | 0 |
| Total | 35 | 65.5 |

SFMTA - TASC, SDAT, DPW, BART, MUNI, Cruise and SFFD Fire Access

SFMTA: TASC (Transportation Advisory Safety Committee)

- All streetscape modification proposals impacting Fire Access reviewed bi-monthly. COVID-19 TASC review for Street Closures for Food Banks, Covid-19 Testing, Vaccination Sites, Shared Spaces and Safe Sleeping Sites.

SDAT (Street Design Advisory Team)

- Weekly meetings with SF Planning Department and City Agencies to review and provide comments on streetscape plans/proposals for building/ development projects.

DPW

- SFFD received **2** request(s) from DPW for SFFD plan review to provide comments on developer/contractor project requests that include street/sidewalk legislation, and street encroachment permits. SFFD conducts plan review to ensure SFFD apparatus has fire access to buildings, hydrants, fire department connections, fire escapes, etc.

BART/MUNI

- SFFD Liaison to BART/MUNI for Fire and Life Safety Annual Inspections. Continuing to work with the SFFD Transit Committee, the SFMTA Central Subway.

Cruise

- SFFD Liaison to the implementation of Autonomous Vehicles in San Francisco. Working with the Mayor's Office of Transportation and other City Agencies regarding training, minimum requirements prior to fully activating Autonomous vehicles. Cruise is currently producing a series of training videos in conjunction with SFFD Division of Training. These videos have been completed and have been released to Division of Training

SFFD

- Contact Fire Stations regarding Traffic Calming devices in their response area. Work with SFPD, DPW, SF Parks and Rec and the Presidio regarding the SFMTA Slow Streets and Shared Spaces ensuring Fire Access. Communicate and collaborate with the FDOC, SFPD, and SFFD units in the Field. Also, sending temporary street closures (ISCOTT) to Fire Administration Lieutenants for Distribution to the field.

SFMTA TASC VIRTUAL MEETINGS

April 14 and 28, 2022

| Type of Street Modification that Impacts Fire Access | SFFD Approval | SFFD Objection | Objection but Resolved | Held for later Hearing |
|---|---------------|----------------|------------------------|------------------------|
| Bike Share Stations | 0 | 0 | N/A | N/A |
| Bicycle Lanes, Class II | 0 | 0 | N/A | N/A |
| Bicycle Lanes, Class III | 0 | 0 | N/A | N/A |
| Bicycle Lanes, Class IV | 1 | 0 | N/A | N/A |
| Raised Crosswalk | 3 | 0 | N/A | N/A |
| Sidewalk Widening | 1 | 0 | N/A | N/A |
| Speed Humps | 0 | 20 | N/A | N/A |
| Speed Cushions | 28 | 0 | N/A | N/A |
| Speed Table | 0 | 0 | N/A | N/A |
| Various School Locations Citywide – Speed Cushions | 1 | 0 | N/A | N/A |
| Gilman Avenue, Btw. 3rd st & Bill Walsh Way – Speed Cushions | 1 | 0 | N/A | N/A |
| Anza Street, Btw. Blake & Parker Ave. – Speed Cushions | 1 | 0 | N/A | N/A |
| 34 th Avenue, Btw. Anza & Fulton St. – Speed Cushions | 1 | 0 | N/A | N/A |
| Bacon Street, Btw. Girard & Goettingen Street – Speed Cushions | 1 | 0 | N/A | N/A |
| Thornton Avenue, Btw. Neptune & Venus Street – Speed Cushion | 1 | 0 | N/A | N/A |
| 3 rd Avenue, Btw. Fulton & Cabrillo Street – Speed Cushions | 1 | 0 | N/A | N/A |
| Ivy Street, Btw. Laguna & Octavia Street – Sidewalk Extension and Raised Crosswalks | 1 | 0 | N/A | N/A |

| | | | | |
|--|---|---|-----|-----|
| Various School Locations Citywide – Speed Humps | 0 | 1 | N/A | N/A |
| 34 th Avenue, Btw. Quintara & Rivera Street – Speed Humps | 0 | 1 | N/A | N/A |
| Main Street, Btw. Howard & Market Street – Main Street Streetscape Project | 1 | 0 | N/A | N/A |

SFMTA COVID-19 TASC Projects

- Safe Sleeping Sites
 - District Inspections
- COVID-19 testing/vaccination sites
 - Walk up and drive through
- Slow Streets
 - Golden Gate, Sanchez, Lake, & Shotwell Streets approved as slow street extensions with the condition that they can be removed by SFMTA upon consultation with Fire Marshal
- Shared Spaces for parklets and street/alley closure requests
 - Lieutenant Sy is the lead with Postings/ Enforcement through task force coordination with DPW and SFMTA. Inspector Wong assists.
- Tenderloin Activations
 - Play Streets
 - Shared streets, road closures, and lane reduction
 - Parking protected bike lanes
- Various School Locations Citywide – Speed Cushions - **Approved.** Standard SFFD Policy on approving speed cushions since rigs can drive thru them.
- Gilman Avenue between 3rd & Bill Walsh Way; Anza Street between Blake and Parker Avenue; 34th Avenue between Anza & Fulton; Bacon Street between Girard and Goettingen; Thornton Avenue between Neptune and Venus Street; 3rd Avenue between Fulton and Cabrillo Street; Speed Cushions – **All Approved.** Standard SFFD Policy
- Ivy Street between Laguna Street and Octavia Street – Sidewalk Extension and Raised Crosswalks – **Approved.** Turn templates okay for SFFD vehicles after size and radius adjusted per SFFD request. Raised Crosswalks located at controlled intersection.
- Various School Locations Citywide – Speed Humps – **On Hold.** Current SFFD Policy to not approve any more speed humps while Third Party Report on increased SFFD Emergency Response Times is completed **and** the Fire Department has an opportunity to determine next steps to address this issue.
- 34th Avenue between Quintara and Rivera Street – Speed Humps- **On Hold.** Current SFFD Policy.
- Main Street between Howard and Market Street – Streetscape Project – **Approved** Establish Class IV Bikeway (Parking Protected). Project specifics adjusted during multiple meetings with SFFD to incorporate Fire Department requests for retaining access to hydrants, fire department connections, etc.
- 100 Golden Gate St. – After multiple site visits, forwarded to SFMTA Site Plan Drawing with Specific Mark Ups for SFFD requirements. Current Status – SFMTA awaiting direction from the Mayor’s Office.

Fire Investigation (Arson Unit)

The number of Open/Active Fire Investigation Reports for April 2022 is 62. The reports include the following types of fires:

- 26 Structure Fires
- 23 Vehicle Fires
- 18 Outside Fires
- 0 Other

The background of the slide features a large, semi-transparent seal of the U.S. Army Corps of Engineers. The seal is circular and contains an eagle with spread wings at the top, a shield in the center, and two figures (a soldier and a sailor) on either side. The shield depicts a landscape with a bridge and a ship. At the bottom, a banner reads "EN GUERRA ORO EN PAZ FIERRO". The text "U.S. ARMY CORPS OF ENGINEERS" is visible around the perimeter of the seal.

Deputy Chief of Operations
Robert Postel
Report to the Commission

Airport Division

SFFD Airport Division Recent Activities Division Update April 1 to April 30, 2022

ADC David Brown

- Participated in SFIA ECC Meeting & Presentation for new apparatus purchases
- Met with Neil Weingarten, SFIA Airside Operations
- Attended SFFD Chaplain Badge Pinning Ceremony
- Attended several meetings for FAA Part 139 Inspection preparation
- Attended Retirement Celebration for Reginald Saunders, SFIA Management
- Participated in 1906 Earthquake Commemoration activities and festivities
- Participated in several days of FAA annual Part 139 compliance certification testing
- Attended SFIA Outbriefing of FAA annual Part 139 compliance certification
- Met with Airport Division Battalion Chiefs to discuss Division projects
- Attended Dispatcher Appreciation Week Celebration at SFIA Communication Center
- Met with Training staff and Airport Division Members regarding Driver Initiative
- Met with Training Staff & SFIA Emergency Planning for Red Cap & future Training Exercises
- Met with SFIA Business & Finance regarding Budget & Operations Capital Projects
- Met with Airport Division Battalion Chiefs, Rescue Captains, Training, & Prevention personnel
- Participated in SFIA Covid-19 Recovery Plan Daily Briefings (virtually)
- Attended SFIA LRSAT & Ramp Safety Monthly Meeting (virtually)
- Attended one Fire Commission Meeting
- Monthly Check-in meeting with SFFD Deputy Chief Robert Postel
- Attended monthly SFIA Airfield Operations Meeting (virtually)
- Attended weekly SOG Meetings with SFIA COO Ralf Ruckelshausen
- Participated in Command Staff Monthly Check-In Meeting with CD1
- Attended SFIA bi-weekly Management Meetings (virtually)

Operations/Training – Captain Robinson, Lieutenant Merkins, and Specialists Farrugia, Hoaglin and Woo

- Attended Runway Safety Meeting (virtually)
- Attended monthly EOC Emergency Planning Meeting
- Attended monthly USCG SAR meeting
- Continued daily alert communications drills
- Conducted several live runway crossing exercises. (Day and Night)
- Conducted ARFF Driver Training Class
- Red Cap Planning Meetings
- Conducted Rescue Swimmer Course at Crystal Springs
- Participate with EOC 5th floor evacuation drill
- Coordinated training for Airfield Safety Officers
- Training records preparation for annual FAA inspection
- Participated in FAA annual Part 139 Inspection

- Attended FAA Inspection Outbriefing
- Training on ARFF driving simulator
- Participated in SFIA Ramp Safety meeting (virtually)
- Conduct monthly training update with Station Captains
- Participated in weekly Airfield Operations Briefing
- Ongoing training: HRET, Piercing Operations, & Cones Course driving
- Conducted ongoing AOA Familiarization, Communications, & Driver Training

Rescue Captains Anderson, Beckwith and Morley

- Responded to 52 medial calls, assisted/observed medics on other non-emergency calls
- Picked-up, reviewed, and graded written PCR's and delivered them to Station #49
- Attended daily Emergency Medical Service (EMS) conference calls
- Monitor and responded to Airport AED program
- Attended San Mateo County MCI Workgroup Meeting
- Updated AED batteries and equipment inside of AED cabinets throughout airport
- Trained SFIA employees in American Heart Association CPR and First Aid certification courses
- Coordinated and trained SFPD in an EMS refresher course
- Celebrated Dispatcher Appreciation Week with members of the communication center
- Trained 8 bike medic relief paramedics with airport familiarization and orientation
- Conducted Rapid COVID-19 testing for symptomatic members
- AHA BLS Instructor training for RCs and Medics (now have 8 certified AHA BLS Instructors)
- Attended daily airport conference calls with Battalion Chief at SFO
- Ensured all members compliant with Target Solutions and other online training
- Continued exposure reports from personnel for COVID-19 cases and work with CDC

CAD RUN TOTALS – April 2022

| TYPE | DESCRIPTION | COUNT |
|----------------|-------------------------|--------------|
| 519 | TRFC COLLISION - INJ | 3 |
| 520 | AIDED CASE | 352 |
| ALERT1 | ALERT ONE | 2 |
| ALERT2 | ALERT TWO | 6 |
| DRILL | DRILL | 1 |
| ELEV | ELEVATOR RESCUE | 15 |
| FIRE | FIRE ALARM | 33 |
| GASINV | GAS INVESTIGATION | 4 |
| ODORINV | ODOR INVESTIGATION | 2 |
| SEWAGE | SEWAGE LEAK | 1 |
| SMKINV | SMOKE INVESTIGATION | 1 |
| SPILL | SPILL OF MATERIAL | 6 |
| SVC | SERVICE CALL | 11 |
| SVCM | SERVICE CALL FOR MEDICS | 1 |
| | | |
| | TOTAL | 438 |
| | BIKE MEDIC TOTAL | 225 |



Deputy Chief of Operations

Robert Postel

Report to the Commission

Division of Training

SFFD Department of Training
Division Update April 1 to April 30, 2022
ADC Shayne Kaialoa

Meetings/Exercises/Training Attended:

April 4, 2022: Conducted the H10 check back meeting. Conducted L2 conferences. Attended the CAD Proposal meeting.

April 5, 2022: Attended the CAD proposal evaluator and SME meeting. Attended the CD1 Monthly Staff meeting. Attended the 9910-welcome address.

April 6, 2022: Attended the CD1 Staff meeting. Conducted EMS Recruit Conferences. Conducted the DOT Admin Meeting. Conducted the DOT Multi-Media Section Meeting. Attended the CAD Proposal Office Hours for Evaluators & SME meeting. Attended the PHUB Meeting with the Academy of Arts.

April 7, 2022: Attended the Mass Search and Rescue/Fire Suppression Discussion.

April 8, 2022: Development of the Surf Rescue Details. Conducted the CCSF SFFD Company Officer Course Meeting. Attended the CNY Annual Spring/Parade Banquet.

April 11, 2022: Development of the Type 6 Driver Sign-Ups. Attended the CAD Proposal Evaluator and SME meeting.

April 12, 2022: Conducted the DOT Staff Meeting. Attended the CD1 one on one meeting. Attended the Chaplains/Badge Pinning Ceremony.

April 13, 2022: Conducted the DOT Multi-Media Section meeting. Attended the monthly Fire Commission Meeting.

April 14, 2022: Attended the CAD Proposal Meeting. Attended the WMD Drill Planning meeting.

April 15, 2022: Development of the H-39 In Service Sign – Ups. Development of the H-16, H-28 Sign-Ups. Attended the L2 Graduation. Conducted a 9910 visit and Q&A at the DOT 19th street facility.

April 16, 2022: Attended the city-wide battalion control exercise.

April 18, 2022: Conducted the DOT Multi-Media Section Meeting.

April 19, 2022: Attended the Mutual Aid Operations Coordinator Meeting. Conducted the CCSF SFFD Officer classes meeting.

April 20, 2022: Conducted the Management Model Meeting. Attended the UI/FSRI Evidence Based Tactical Considerations meeting.

April 21, 2022: Attended the Training Workgroup Meeting with CD2 and Chief Treff. Attended the Training Work Group Meeting. Conducted a Executive Officer Meeting with A/BC Luttrup. Conducted the 129th suppression Live Fire Planning meeting.

April 22, 2022: Development of the Surf Rescue Session 2 details meeting. Conducted the Executive Officer Meeting #2. Conducted the 129th Live Fire Planning Meeting.

April 25, 2022: Delivered the SFFD/Leadership Class to the Lieutenants Academy.

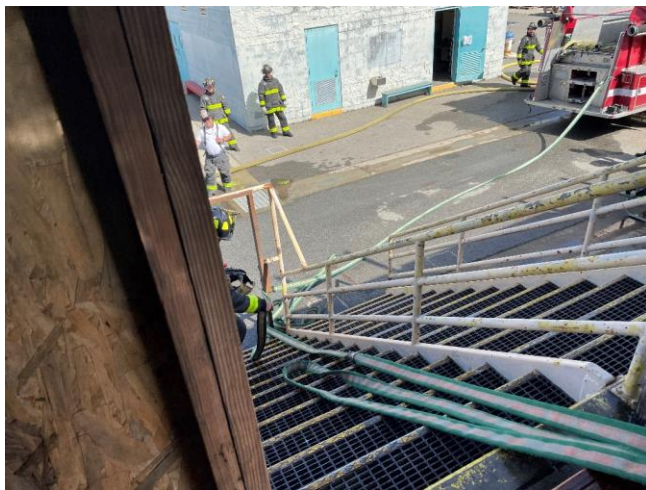
April 27, 2022: Development of the SRFC Details. Attended the CD2 Bi-Weekly meeting.

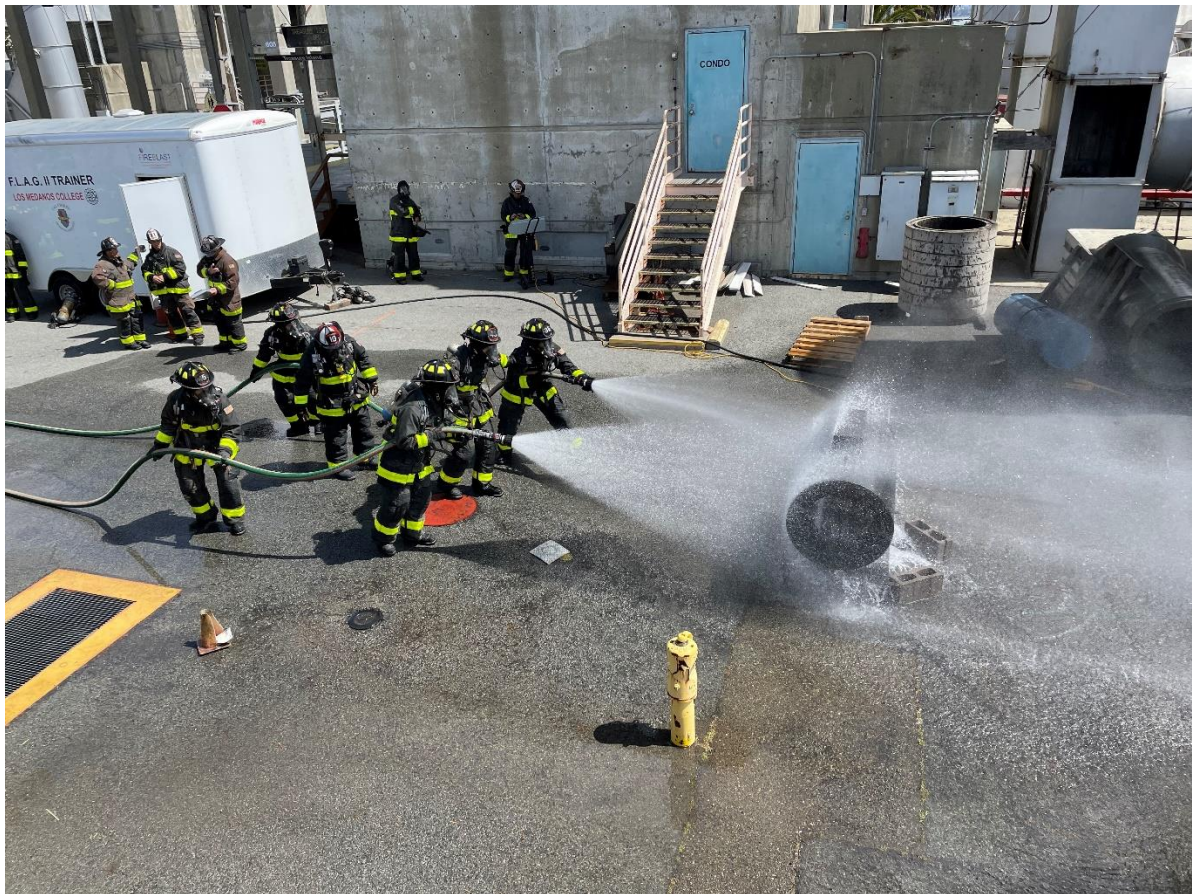
April 28, 2022: Conducted H-39 In-Service Interviews.

Safety 1: No activity.

Recruit Training

- 129th Recruit Class is on weeks. Forty seven recruits remain with three resignations, and two separated for deficiencies
- Physical Training has been steady with a mix of cardio, strength, and recovery days
- Drills and Instruction
 - Confined Space Awareness Class (1 day Orientation with RS1)
 - Flammable liquids training
 - High Rise Bundle lead off of Standpipe
 - Ready Line 150ft (Standard Load)
 - Ladder rescue
 - Make and Break 3 (Large line wye lead to 2nd floor, charged, then high rise bundle stretched, charged, bled and flowing while on SCBA.)
 - 50' extension ladder, obstruction raise
 - Bracing of the 50' extension ladder
 - Haz Mat First Responder Orientation (IAFF)
 - Wild Land Training (State Fire Marshal)







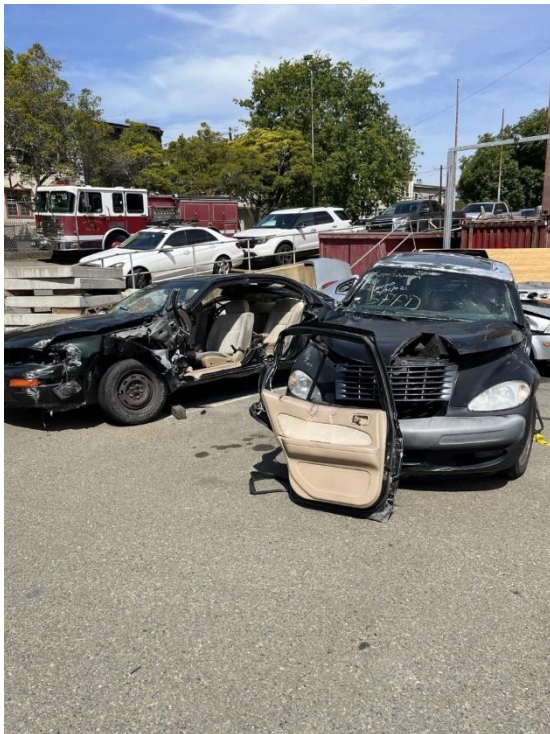






Auto Extrication Drills

- General Order 20 A-83 states that every Saturday one Truck Company and one Rescue Squad must report to the Division of Training for a Saturday Auto Extrication Drills. There is a schedule of which companies are due.
- There were 5 scheduled training days in the month of April 2022 at the Folsom Street Campus
- The following Companies were due to attend training this month with modifications and social distancing measures in place:
 - 4/2/22 Truck 08, Rescue Squad 1
 - 4/9/22 Truck 14, Rescue Squad 2
 - 4/23/22 Truck 15, Rescue Squad 1
 - 4/30/22 Rescue Squad 1



Suppression In-Service Drills and Instruction

- Back to Basics Module: With the focus on Hose Leads, Ladders, SCBA and Forcible Entry

- H-10 Academy Live Fire Component
- 2022 Sentinel Exercise in Sonoma County as part of a USAR Team
- Delivery of Gas/Electric Emergencies to the Lieutenants Academy
- Return to Duty

Total of 955 hours of training for 356 members

DOT/EMS Academy Drills and Instruction

- H3L2 Academy #6
- H3L1 #20 Academy
- EMS Advancement Academy #24
- 9910 City EMT Intern Academy
- Advanced Cardiac Life Support (ACLS)
- CPR Instructor
- 129th H2 EMS Instruction
- Target Solutions

Total of 8,337 hours of training for 2,336 members

Additional Work Performed

- Video work (filming, editing and voice overs)
- EMS Return to Duty Training
- Certification/Accreditation Tracking
- EMS10 In Service
- TEMS Training

The 127th Class began probation on June 26, 2021

- Class members are in assignments for second PX House
 - PX members have been all scheduled for practice drills for aerial, pump, and cones
- 128th Recruit Class began probation on December 23, 2021
 - Completed third month of probation at their first 6-month assignment
 - PX members have been all scheduled for practice drills for aerial, pump, and cones
- Oversee practice and testing of PX firefighters for Pump/Aerial tests, pre-trip inspections, and hose leads
 - 125 PX members
 - 242.5 total hours
- Fire Reserves
 - Training with Fire Reservices on Thursday nights
- Instructor updates
 - Prep for the 130th Class in progress.
 - Search for Cone Testing/Practice location.
 - City College availability may change. Upper lot being used for COVID. Lower lot is controlled by the PUC. Bill Teahan has given us permission to use. This is our primary option as of now.
 - Pier 96 is no longer optional due to PD's new contract with the Port.
 - South Shipping Lane of Pier 96 also unavailable until middle of 2021.
 - Pier 80 is a new possible option but has limited time available. It is an active commercial port used by Tesla. This option will cost \$2500 per day.

- Cow Palace is still an option with limited availability. We have been losing our scheduled dates to other paying customers of the Cow Palace
- Ongoing projects
 - Video Drill Manual –
 - AWSS (Auxiliary Water Supply System) training bulletin for reserves ongoing.
 - Maintenance projects: Vehicles, Training
 - Equipment, Inventory, and Auto Extrication

Neighborhood Response Team (NERT)

NERT is a free training program for individuals, neighborhood groups and community-based organizations in San Francisco. Through this program, individuals will learn the basics of personal preparedness and prevention. The training also includes hands-on disaster skills that will help individuals respond to a personal emergency as well as act as members of a neighborhood response team.



San Francisco is made up of many neighborhoods. We are training San Francisco residents to be one ready community when it counts. Together we can create a lifeline between your family and neighbors, and the City's emergency responders.

Drills and Instruction

April 16 Citywide Drill

- 84 registered, 80 showed up, despite rain. See photos below.
- 16 Triage volunteers present in moulage.
- 2 field survey teams, 2 triage rooms, 2 staging areas, ACS and HAM operations, Mobile Command present.

April 30 HAM Cram with Bay Area Emergency Amateur Radio society

- 45 registered, 37 participants.
- Lt. Galvin presented about NERT, Isaac Bentley presented on ACS and NERT HAM opportunities and distributed radios to NERT graduates who passed the class. Nathan Karkoski presenting on 2M Critical Mass event in San Francisco.

Miscellaneous

- Targeted Eventbrite Pre-Registration Groups
 - 650 new
 - 460 recertifications
- NERT pages on SF-Fire Website updated.
- NERT Advisory Board monthly meeting held on 4/19/22

Planned Items

- Review resumes of applicants for civilian NERT position with Chief Arteseros Brown.
- Train the Trainer planned to take place over 2 weekday sessions in May. Dates TBD
- Full NERT Training to follow completion of Train the Trainer, involving as many graduates as possible. Dates TBD
- Additional Full trainings and Recertification sessions
- October Citywide Drill planning

Ongoing Projects

- Maintenance of ACS equipment at Battalion Stations.
- Clean out and re-organize NERT office
- Review potential use of SQL Database created by advisory board member to both replace the current Access database and the need for Eventbrite.
- Completion of Train the Trainer participant's certification. On boarding of new instructors
- Interim coordinator involvement support of content involved activity such as participation with CERT programs and policy.
- Assisting/reviving coordination of neighborhood-level NERT teams (self-managed by volunteers)
- Maintenance of ACS equipment at Battalion Stations.

NERT Training Photos





San Francisco Fire Auxiliary Reserve Monthly Report
Drills and Instruction

- Forcible Entry, Make and Break
- SCBA's Search and Rescue, and Entrapment
- First in Engine Drills, 35' Ladder
- Gleeson, Forcible Entry

Total of 112 hours

Volunteering/Community Service 03/05/22 SFFD City Jobs Job Fair at Hollywood Park

- Cherry Blossom Festival
- Mission High EMT School
- SFFD Job Fair, City Hall
- PRIDE Planning Meeting

Total of 79.5 hours



