



SFFD Behavioral Health Unit

Battalion Chief Matthew Alba

Captain Heather Buren

Navigator Jennifer Greene



Agenda

- History
- Behavioral Health
Unit Overview
- Staffing
Structure/Expansion
- State of Affairs

History

1967

- The Posse

1979

- SFPD Stress Unit Founded

1986

- SFPD Stress Unit founded by Chief Ed Phipps

1987

- GO 87-A-44
- Father Greene created Stress Unit Committee
- BFA adds member to the Stress Unit

2019-2023

- Health Safety and Wellness Chief
- Peer Support Team established

Behavioral Health Unit Overview

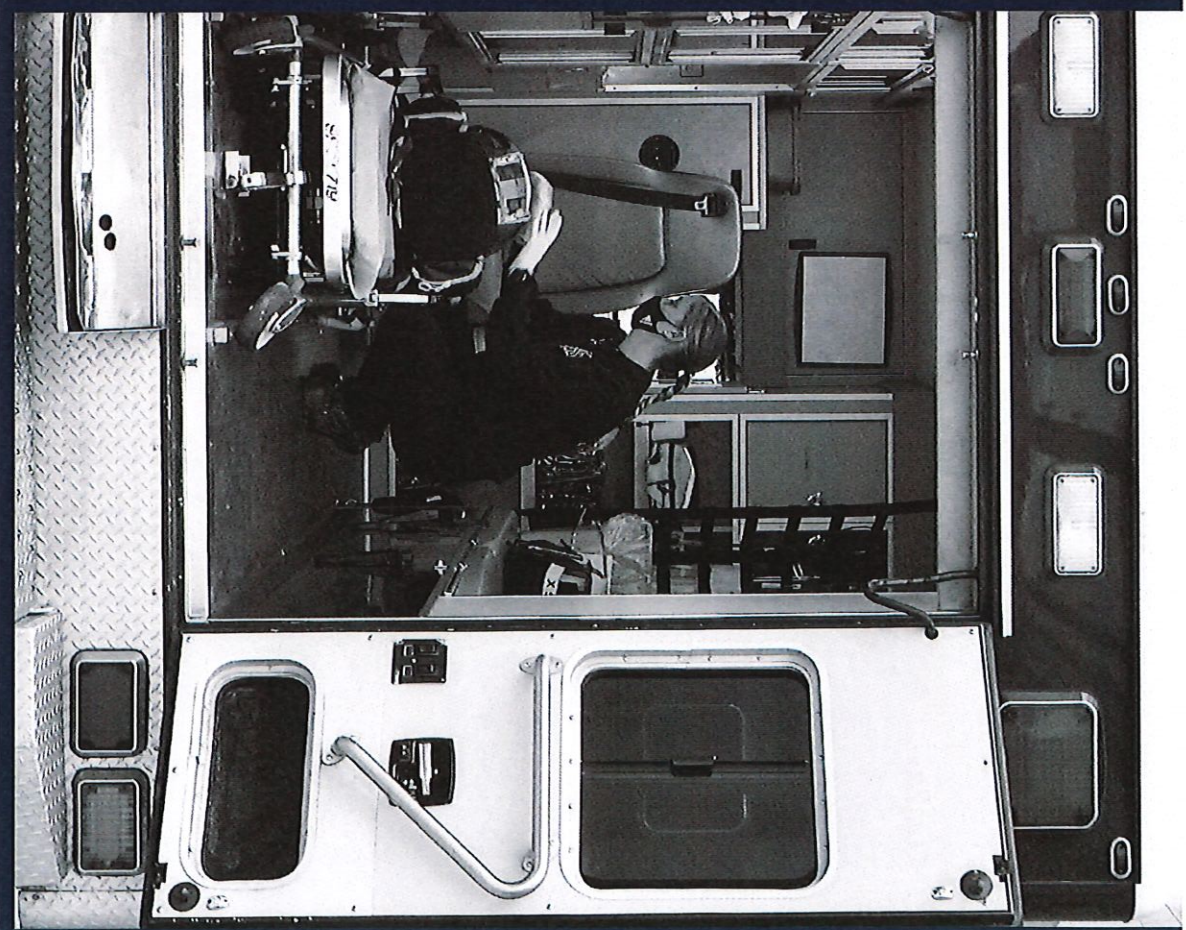
- BHU Navigators
- Peer Support Team
- Critical Incident Response Team
- Facility Canine Team
- Chaplains Program



Behavioral Health Unit

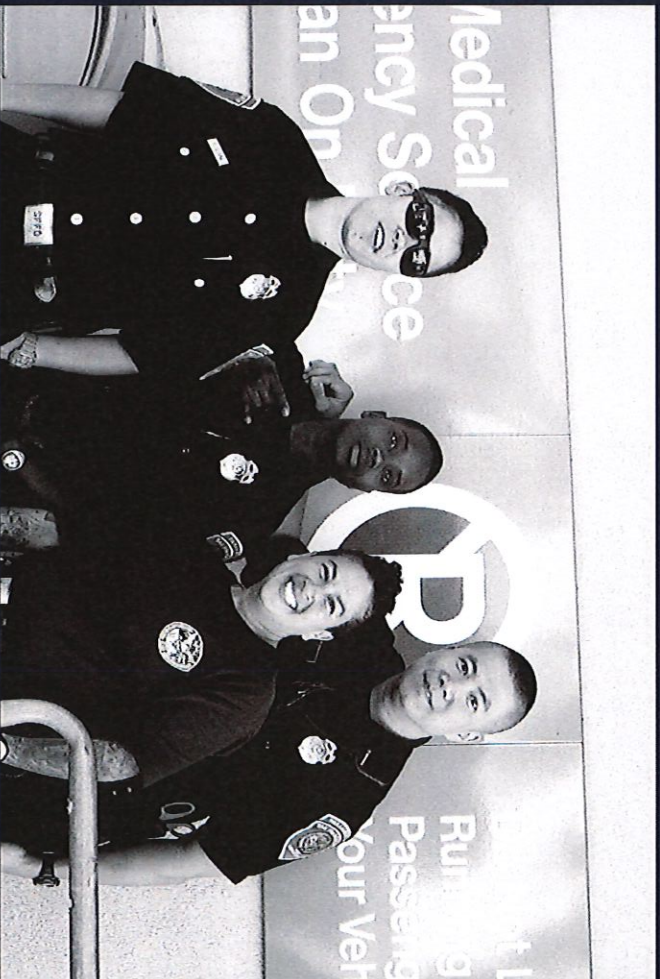
Navigators provide confidential assistance and support for 1400 active members and 1700 retirees and their families with:

- Addiction services
- Refer and assist members to access culturally competent clinicians
- Critical Incident Stress Debriefings and Diffusings
- Coordinate with EAP, private insurance, SFHSS to available resources
- Negotiate RFPs for Unit resources
- Education and classes to new recruits



Peer Support Team

“Peer support is based on the notion that those who have overcome the impact of stressful and traumatic events are uniquely qualified to assist others dealing with similar experiences”





Critical Incident Response Team

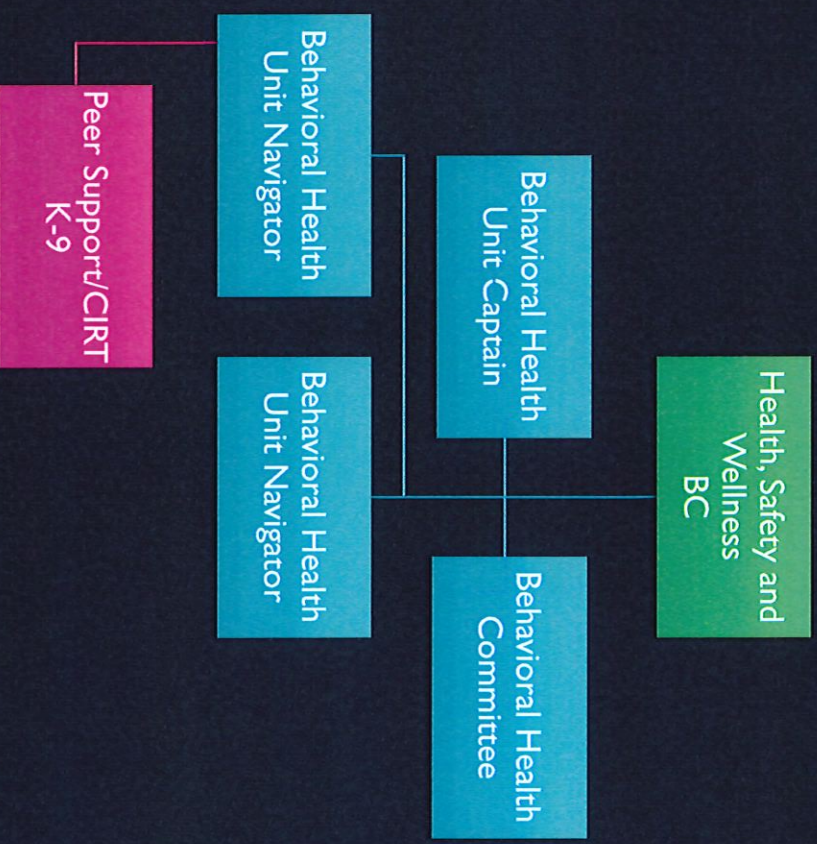
On-call 24 hour response team trained to assist in critical incidents by providing support and debriefing for members, dispatchers and family.

Facility Dogs

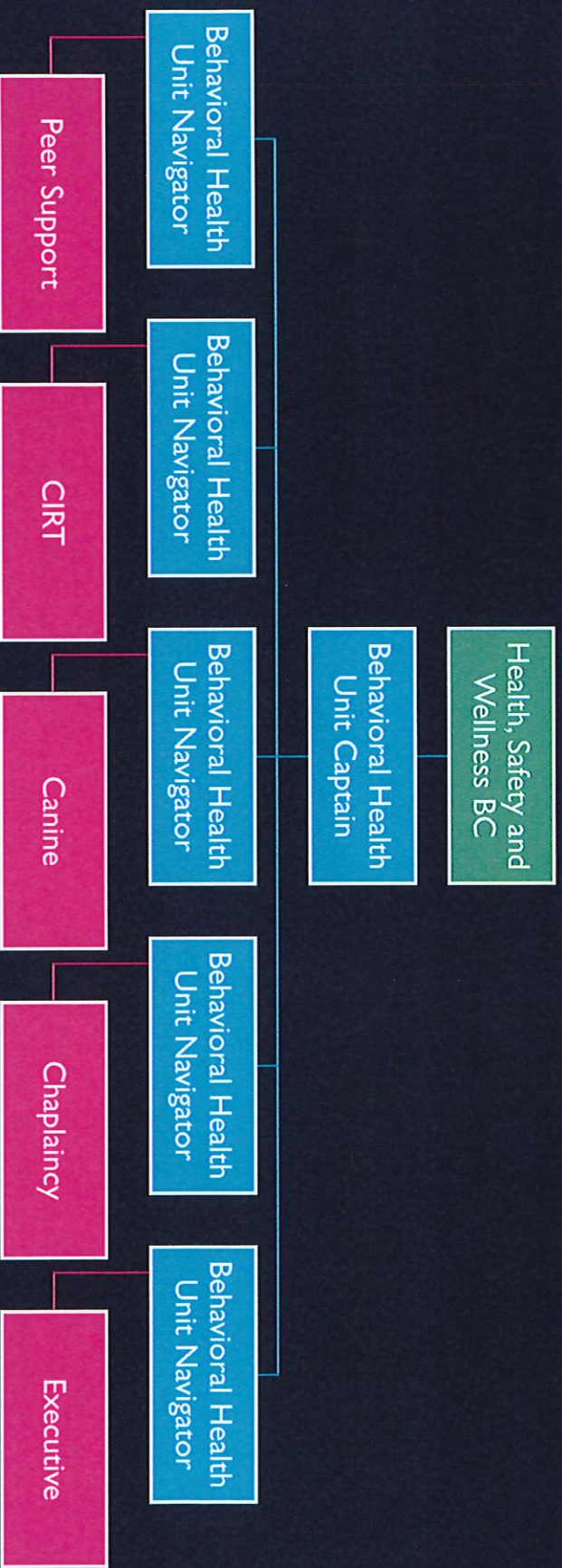
Canine support for SFFD members
working in conjunction with the CIRT
team and the BHU.



Current Behavioral Health Unit Structure



The Future of the Behavioral Health Unit





Issues with our members

Mandatory Overtime/Staffing

Increase in call volume

Members with less than 5 years

Addiction / functional addicts

Violence from patients directed at EMS crews

Pandemic & divisions because of the mandated vaccines & mistrust of one another

The time is now!