

# San Francisco Fire Department Airport Division



- The SFFD Airport Division supports the Fire Department's Mission by providing SFO with high quality Fire and EMS Response, as well as fire prevention services, to meet the needs and mission of San Francisco International Airport
- There are 105 members of the SFFD AP Division
- Members have at least 3 years of service in the SFFD prior to assignment to the AP Division
- Suppression members are required to undergo 40+ hours of specialized training before going out on the line
- EMS and Prevention members are required to undergo 10 hours of specialized training

## 2022 STATISTICS

42,158,352 Passengers  
970 Flights Per Day

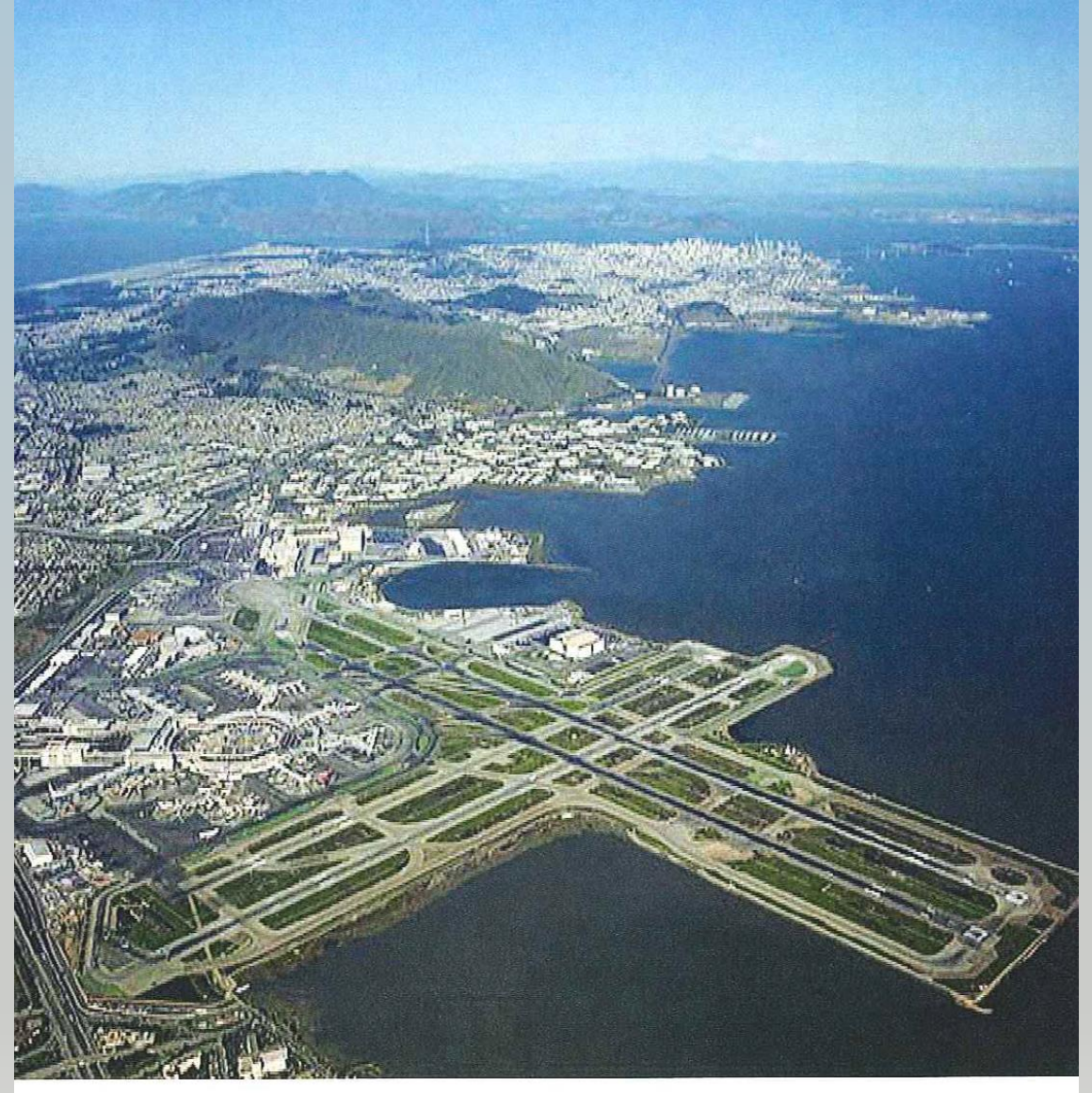
5475 Calls for Service

Response Area is 8 Square Miles  
AOA is 4.5 Square Miles

### *Four Runways*

- 28R/10L            11,870'
- 28L/10R            10,600'
- 01R/19R            8,409'
- 01L/19L            7,001'

- *Three Domestic Terminals*
- *One International Terminal*
- *Approximately 30,000 employees*
- *Over 300 structures*
- *Over 10 square miles of bay*



# *SFFD Airport Division Staffing*

## *Bureau of Fire Prevention*

- *1 Captain- Airport Fire Marshal*
- *2 Lieutenants*
- *2 Inspectors*
- *1 Fire Protection Engineer*
- *Provides Plan Check, New Construction Inspection, Operating Permits, Annual Fire Safety Inspections, and Extinguisher Inspection and Servicing*
- *Terminals: 3,067,500 Square Feet*

- 3 Stations
- 12 Staffed Apparatus
- Variety of crossed staffed special response apparatus including MCU, Rescue Watercraft, Fan Boat

# *SFFD Airport Division Daily Staffing*

- 1 Assistant Deputy Chief (Days)
- 1 Training Captain (Days)
- 1 Training Lieutenant (Days)
- 2 Firefighter Training Specialists (Days)
- 1 Executive Secretary: Sara Brown (Airport Commission Employee)
- 2 Bike Medics (12 Hr Shifts)
- Total of 25 members working daily 24 hour shifts
- 1 Battalion Chief
- 1 Rescue Captain
- 4 Company Officers
- 4 Firefighter/Paramedics
- 15 Firefighters

# Training and Administration

- FAA requires specific training in 16 different ARFF specific disciplines
- Training Records, Equipment, and Response Readiness are evaluated annually by the FAA in a week long inspection
- Training also includes special Apparatus Operator Training for the ARFF Trucks as well as for the Boats and Rescue Water Craft
- SFFD AP Division Firefighters must also maintain proficiency in standard Fire and EMS skills/knowledge
- The Division purchases and maintains supplies and equipment





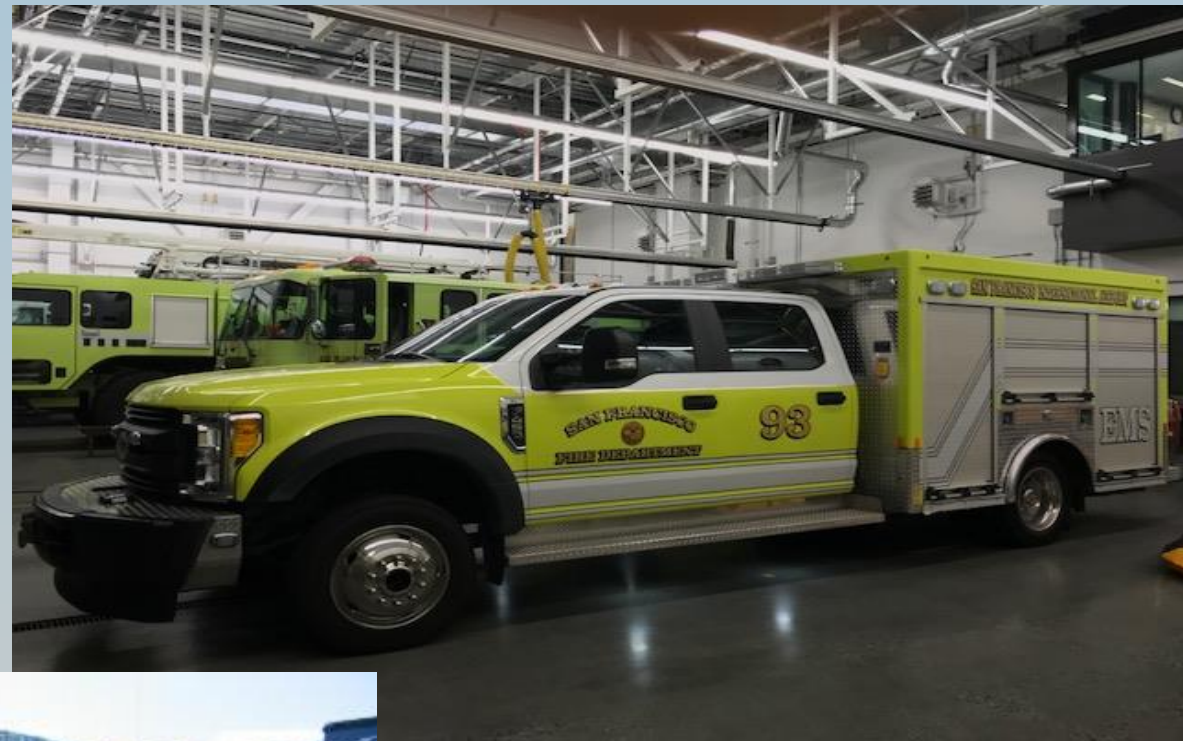




# OSH KOSH STRIKER 4500 CRASH TRUCKS

- 4500 Gallons of Water
- 500 lbs of Dry Chemical
- 460 lbs of Halon
- 2 Turrets – Bumper Mounted and High Reach Extendable
- Undertruck Sprinkler System











# City Units respond to "Boxes" ARFF units respond to "Alerts" (Warnings)

- **Alert 1**- Pilot reports minor mechanical problem, stations open apparatus doors, apparatus position on the apron and stand by.
- **Alert 2**- Pilot reports indicator lights show smoke, hydraulics, possible stuck land gear or flaps problem. Units stage at pre-designated locations on AOA.
- **Alert 3**- Pilot indicates engine fire/ failure, smoke/fire on board, navigational failure. Heaving landing is imminent. Units stage at predesignated locations. 101 (SFFD) & 303 (SMC) response is struck



# Bike Medic Program

## Staffed Daily 6am -12pm

- Bike Medics provide rapid response to medical calls in the terminals
- Each bike is fully equipped with a full set of ALS and BLS equipment
- Bike Medics can provide the same interventions provided by Engine/Ambulance Medics



# What's Coming for the AP Division?

- Transition from AFFF to FFF foam
- New Bike Medic station in the international terminal
- Upgraded Hazmat/Rescue training and capability
- Relocation of Station 1
- Annual Exercise
- Visit from the Commissioners?