

SFFD OFFICE OF EMPLOYEE HEALTH

Steven Chang, DO



JULY 2024 UPDATES

- Staff
- Office Refresh
- Medical Screenings
- Annual Wellness Exam
- Station Visits
- Health, Safety & Wellness Collaboration
- Electronic Health Record
- Continuous Quality Improvement



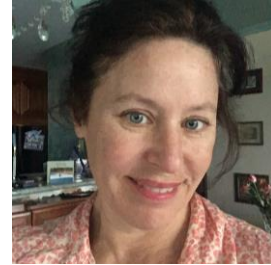
Steven Chang, DO

Department
Physician



Stephanie Phelps, NP

Nurse Practitioner



Janie Bryant, MD

Part-Time
Physician



Tretha Stroughter, MEA

Medical Assistant

OFFICE REFRESH

- ▶ Fresh paint
- ▶ Upcycled furniture
- ▶ Calming décor

New Weekly Team Meetings!



MEDICAL SCREENINGS IN 2024

96 pre-
employment
physical exams

18 promotional
exams

97 end of
probation
exams



- ▶ Previously known as “Health Check”
- ▶ New program
 - ▶ Developed with the Division of Health, Safety & Wellness
 - ▶ Member and Primary Care Provider (PCP) driven
- ▶ Approved by Administration and Local 798
- ▶ Next Steps: Implementation

ANNUAL WELLNESS EXAM



With Deputy Chief of Administration
CD3 Shayne Kaialoa

STATION VISITS



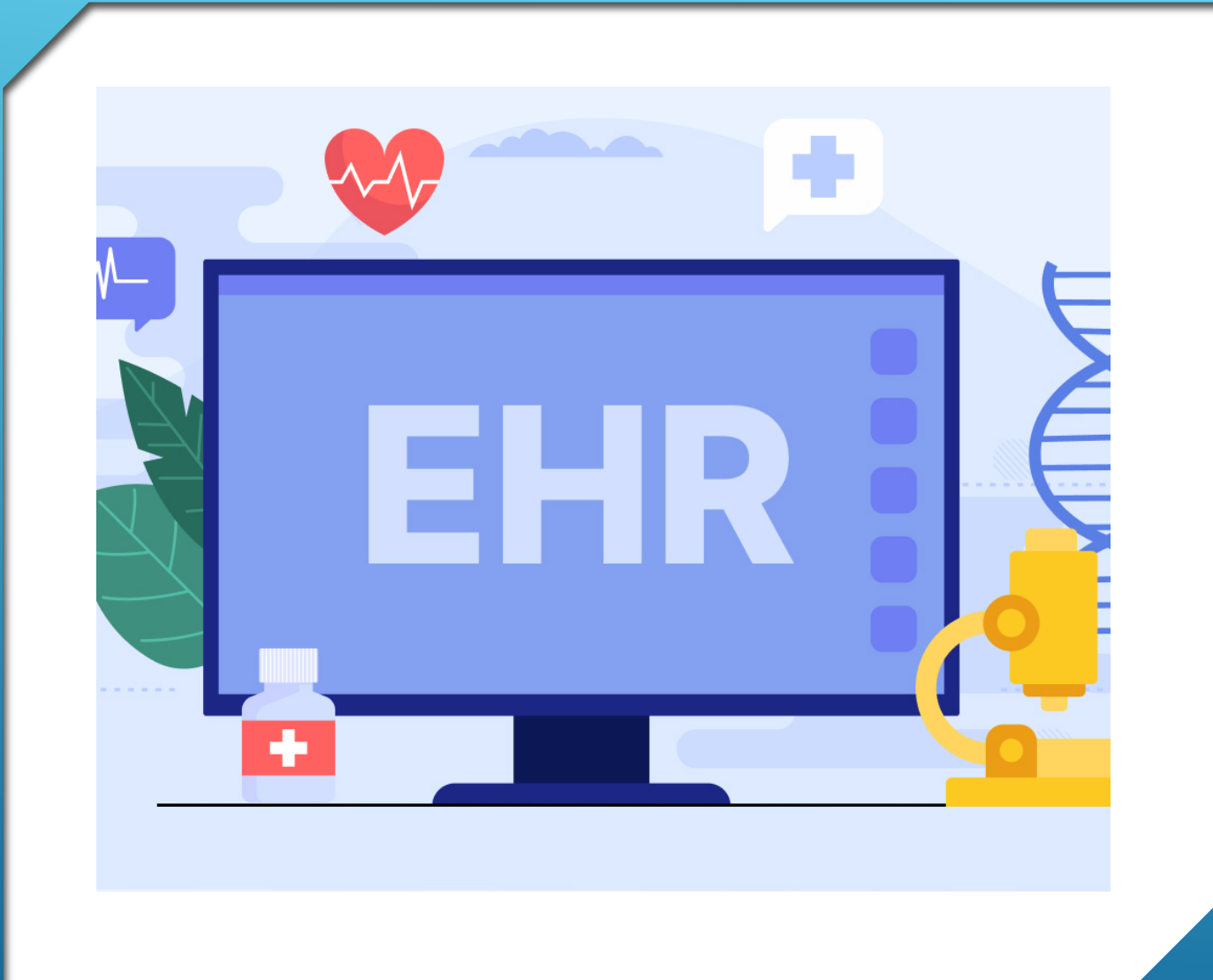
- ▶ **Health, Safety & Wellness**
 - ▶ BC Matt Alba
 - ▶ Annual Wellness Exam sub-committee
 - ▶ Fitness Program
- ▶ **Behavioral Health Unit**
 - ▶ Cpt Heather Buren
 - ▶ Regular meetings
 - ▶ Addiction Medicine learning
- ▶ **SFFD Industrial Hygienist Tony Boone**
 - ▶ Illness and Injury Prevention reporting
 - ▶ Bloodborne Pathogen Exposure control plan

HEALTH, SAFETY & WELLNESS COLLABORATION



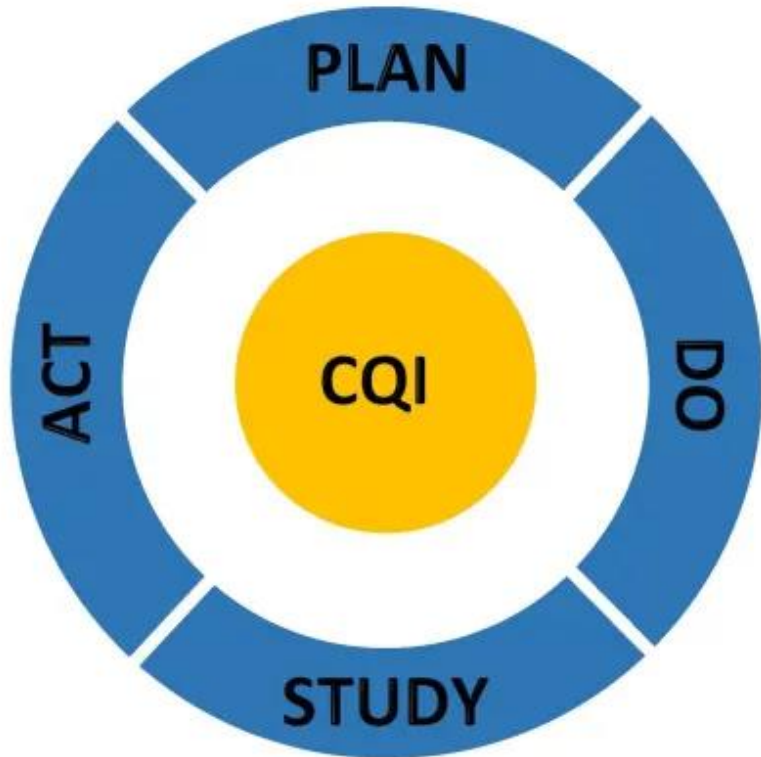
- **Electronic Health Record**
- **Continuous Quality Improvement**

ON THE HORIZON



ELECTRONIC HEALTH RECORD

- ✓ IT Manager Jesus Mora
- ✓ Deputy Director Finance and Planning Mark Corso



- ▶ **Continuous Quality Improvement (CQI)**
 - ▶ Progressive incremental improvement of processes, safety, and member care.
- ▶ **Examples:**
 - ▶ Annual Wellness Exam
 - ▶ TB Screening
 - ▶ Hearing Screening
 - ▶ Vaccinations
 - ▶ Work Status Reports

CONTINUOUS QUALITY IMPROVEMENT

THANK YOU

Office of Employee Health

415-558-3446

FireMD@sfgov.org

Steven Chang, DO

Steven.Chang@sfgov.org