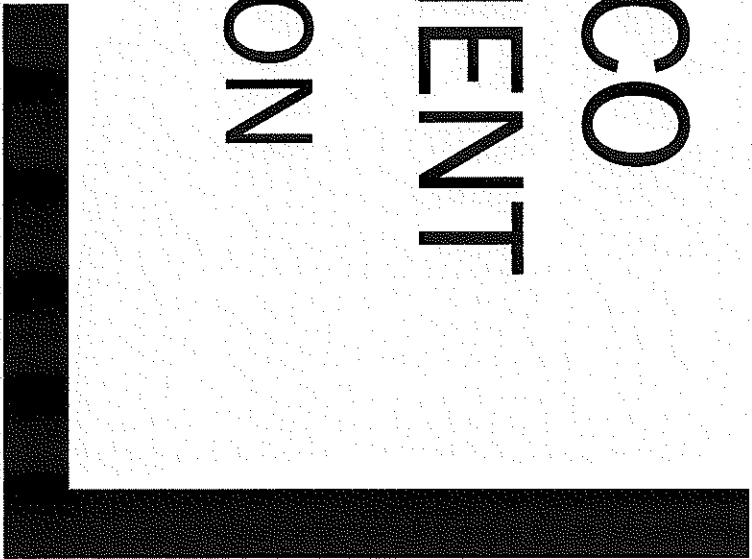


**SAN FRANCISCO  
FIRE DEPARTMENT  
AIRPORT DIVISION**

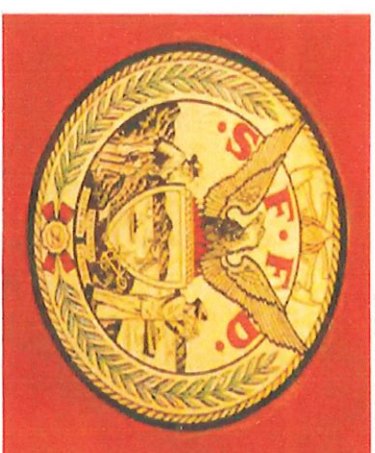


*Chief of Department  
Joanne Hayes-White*

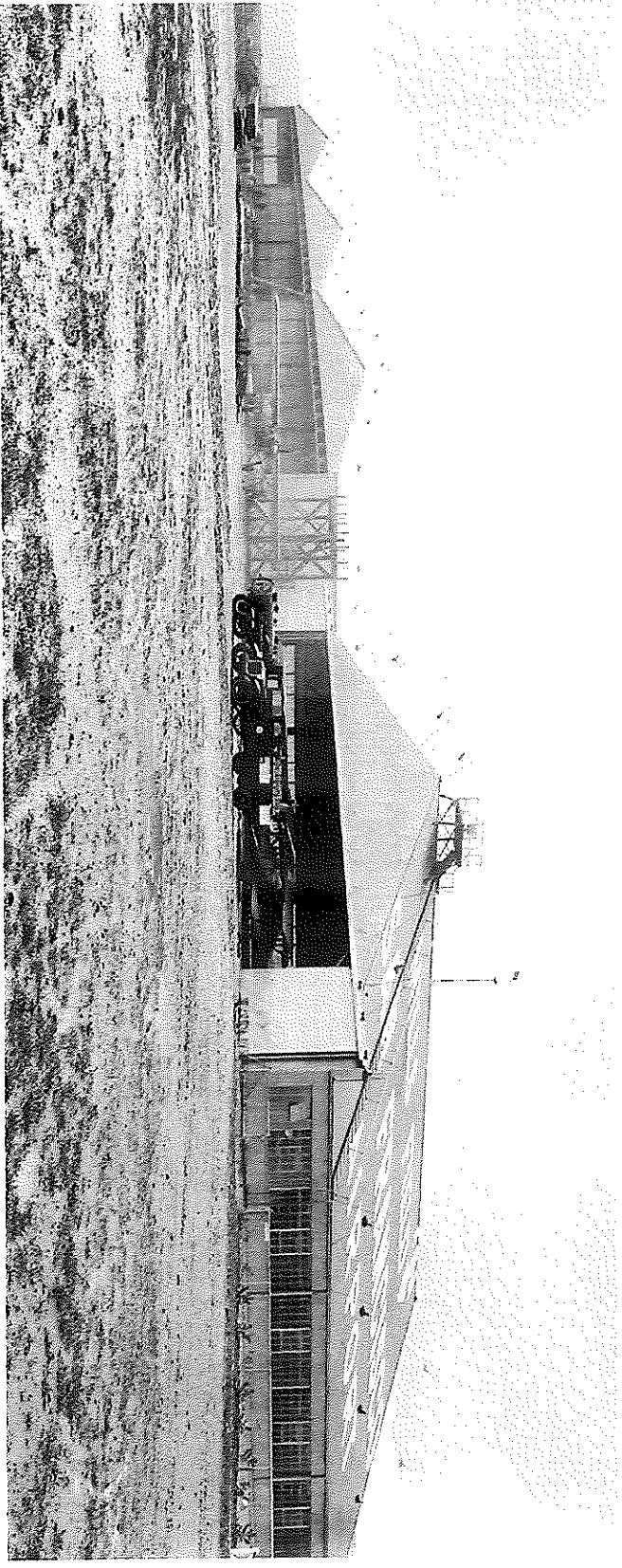
*Airport Director  
Ivar Satero*



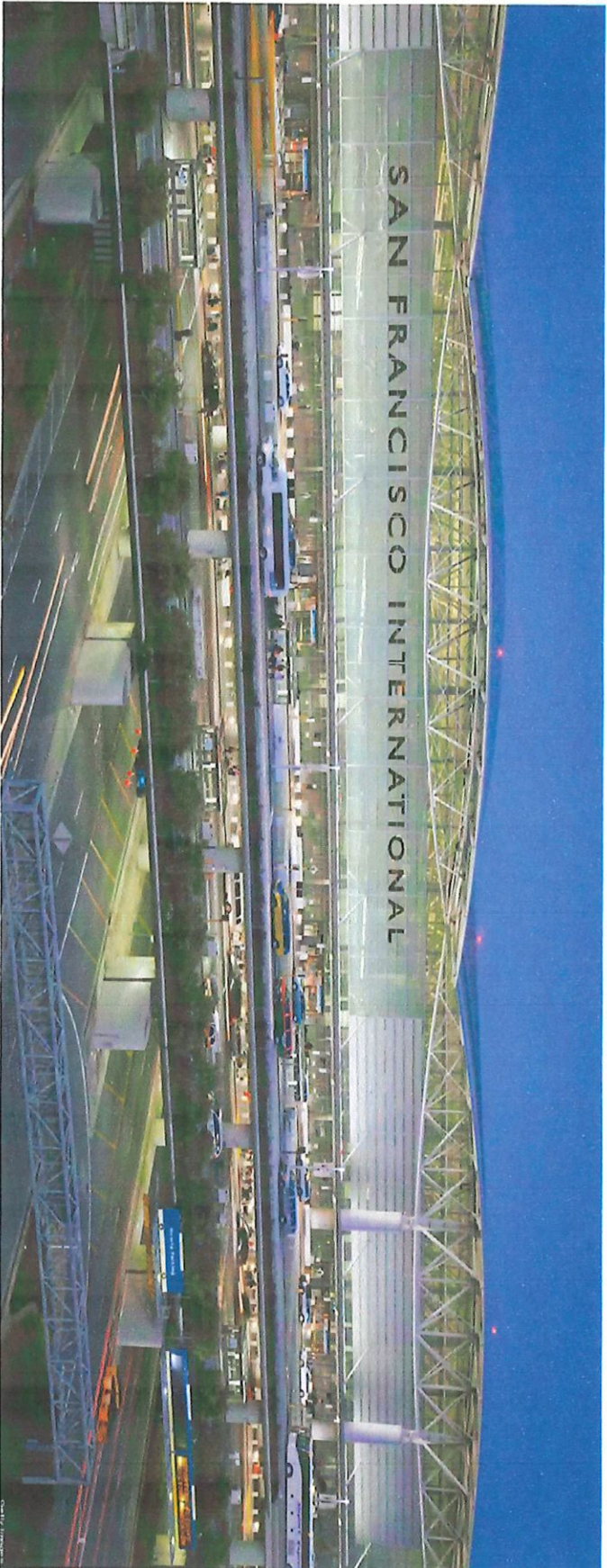
**San Francisco  
International  
Airport**



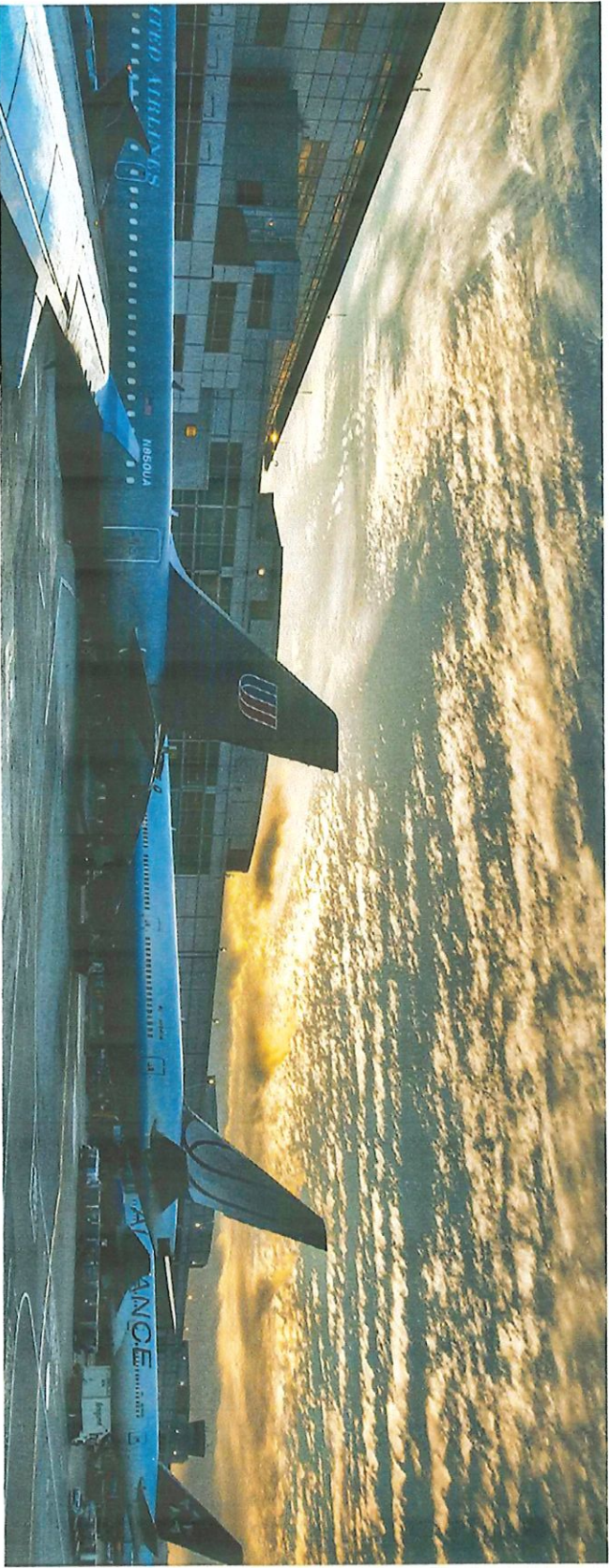
*San Francisco International Airport  
Then...*



... *And now*



*San Francisco International Airport is  
a Index "E" Facility*



## ***Airports are classified by an index, the index is determined by the following:***

- *The FAA Calculates the ARFF index by considering the length of the aircraft and the average daily departures of aircraft.*
- *There are 5 possible index classifications, A-E index. SFO is an Index E facility.*
- *The number of firefighting equipment required is determined by the index classification.*
- *Index E is given to airports that service aircraft 200' or longer and have 5 or more daily departures of that aircraft.*
- *Index E airports require 3 firefighting vehicles that together can discharge 6000 gallons of water, AFFF capabilities (Aqueous Film Forming Foam) a turret discharge rate of at least 600 gallons per minute. Dry Chemical, halon 1211 clean agent.*
- *SFFD airport division is equipped with 4 Osh Kosh Striker 4500 firefighting apparatus, 2 type 3 structure engines 1000 gallon tank capacity, 1 100' aerial platform truck, 2 medical apparatus, 2 MCU apparatus.*

## 2017 STATISTICS

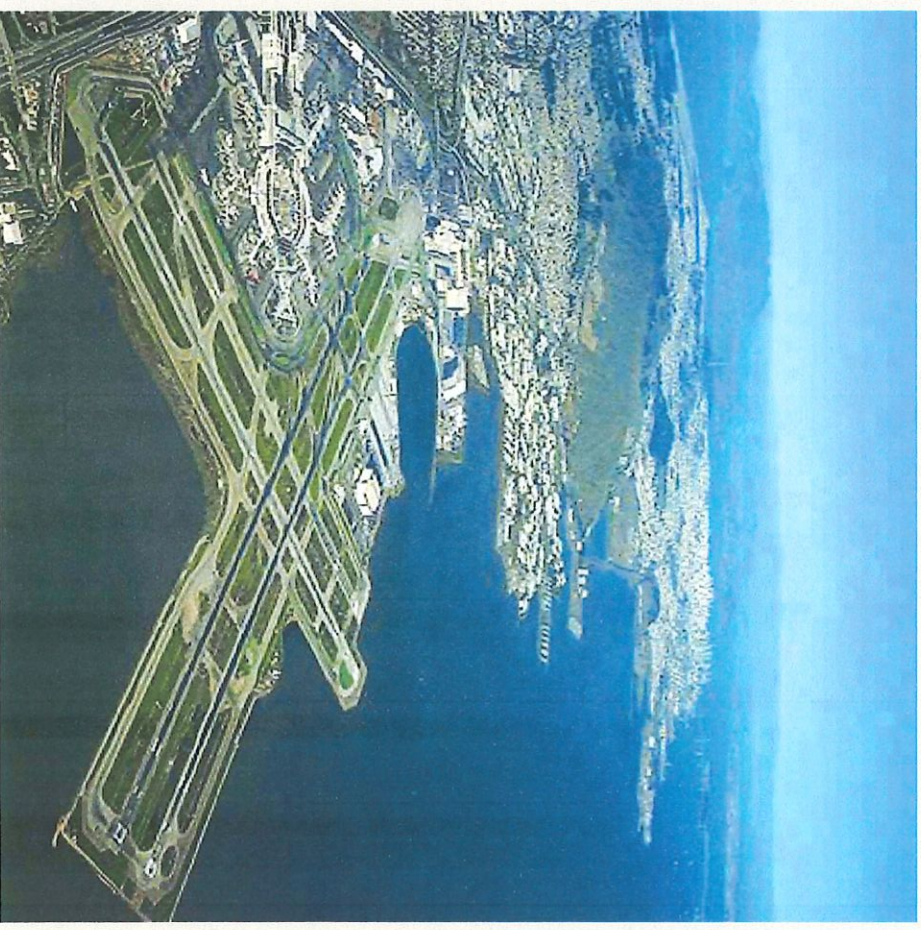
55,822,129 Passengers  
Largest Airport Northern California  
2nd Busiest in the state  
7th Largest Airport North America  
24th Largest Worldwide  
90th Anniversary

### Four Runways

- |           |         |
|-----------|---------|
| • 28R/10L | 11,870' |
| • 28L/10R | 10,600' |
| • 01R/19R | 8,409'  |
| • 01L/19L | 7,001'  |

All Runways are 200' wide

- Three Domestic Terminals
- One International Terminal
- Approximately 30,000 employees
- Over 300 structures



# SFFD Airport Division Staffing

- 1 Assistant Deputy Chief (Days)
- 1 Training Captain (Days)
- 1 Training Lieutenant (Days)
- 1 Battalion Chief (24 hours) ~~AD~~
- 1 Rescue Captain (24 hours)
- 1 Captain
- 3 Lieutenants
- 17 Firefighters
- 2 Medics
- 1 Bike Medic (Days)
- Total of 25 members working daily 24 hour shifts
- Mrs. Jayn Feyling Executive Secretary with over 37 years service



# APPARATUS

# Osh Kosh Striker 4500

- All Wheel Drive
- 4500 Gallons Water
- 630 Gallons AFFF Foam
- 500 lbs. Dry Chemical
- 460 lbs. Halon (Clean Agent)
- HRET - High Reach Extendable Turret

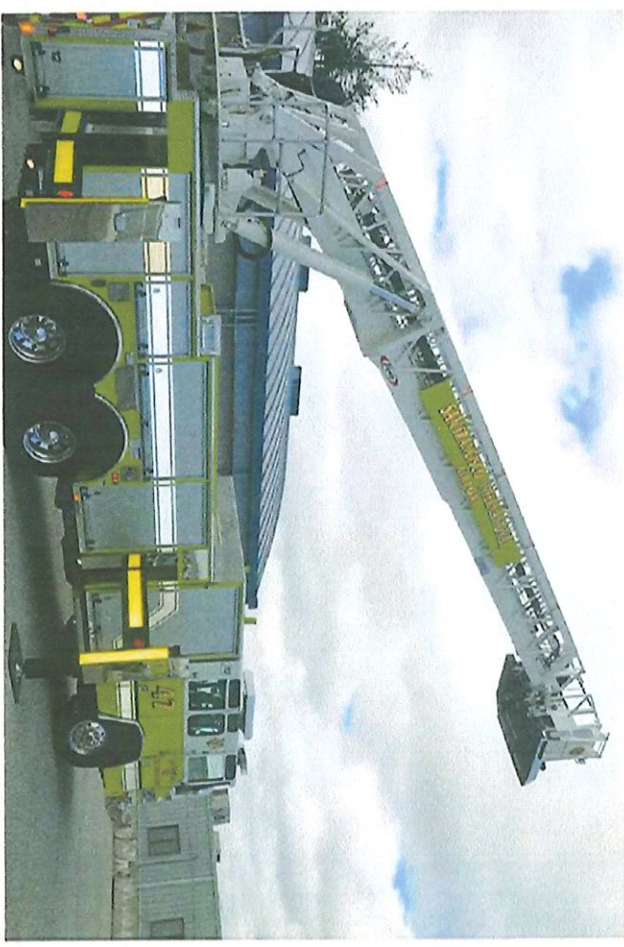


# *Additional Firefighting Apparatus*

*Rescue 33 1000 Gal Type 3  
Engine*



*Rescue 47 100'  
Platform Aerial Truck*



## 2 Medic Units- Rescue 91 & Rescue 93



***Mass Casualty Unit (MCU)  
"Rescue 81 & 83"  
Stores medical equipment to provide for 500 patients***





# MOBILE COMMAND VEHICLE M-211

Used by SFFD, SFPPD, EOC

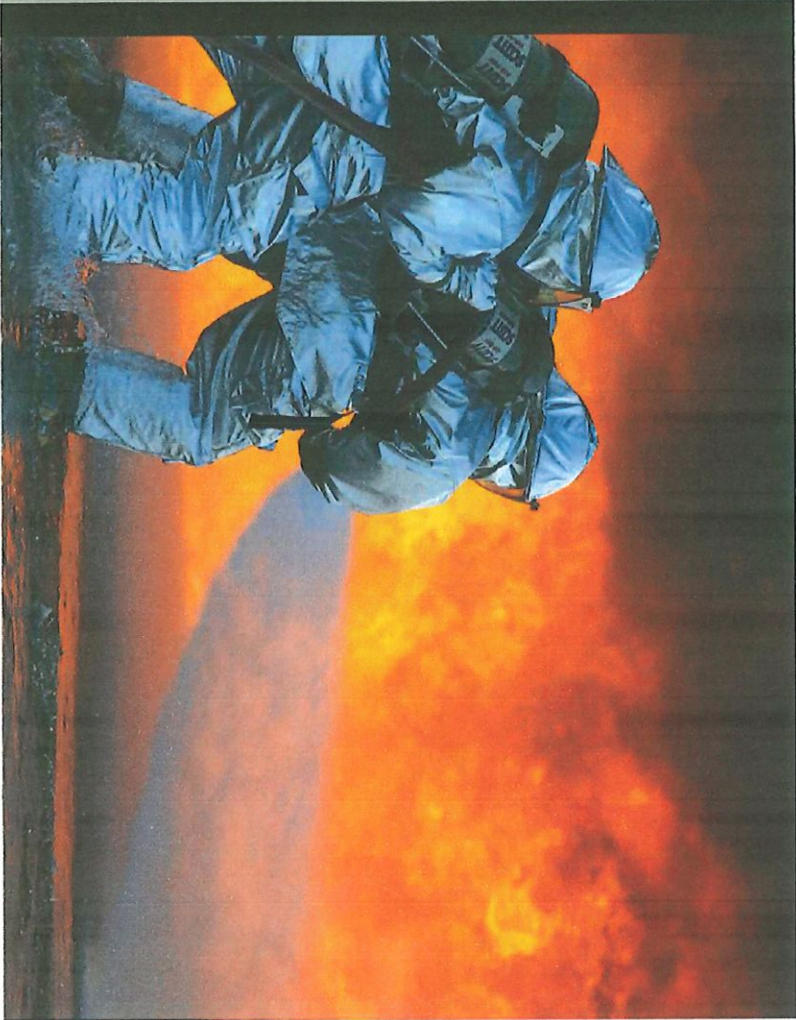


# *767 training aircraft*



# *Training Airport Rescue Firefighters \*ARFF\**

- *All current ARFF have gone through a new 40 hour curriculum*
- *All new ARFF training has increased from an 8 hour curriculum to the new 40 hour curriculum*
- *SFFD Assistant Chiefs and Battalion Chiefs as well as SMCC will go through a special ARFF command course*
- *ARFF members must recertify every year*





# City Units respond to "Boxes"

## ARFF units respond to "Alerts" (Warnings)

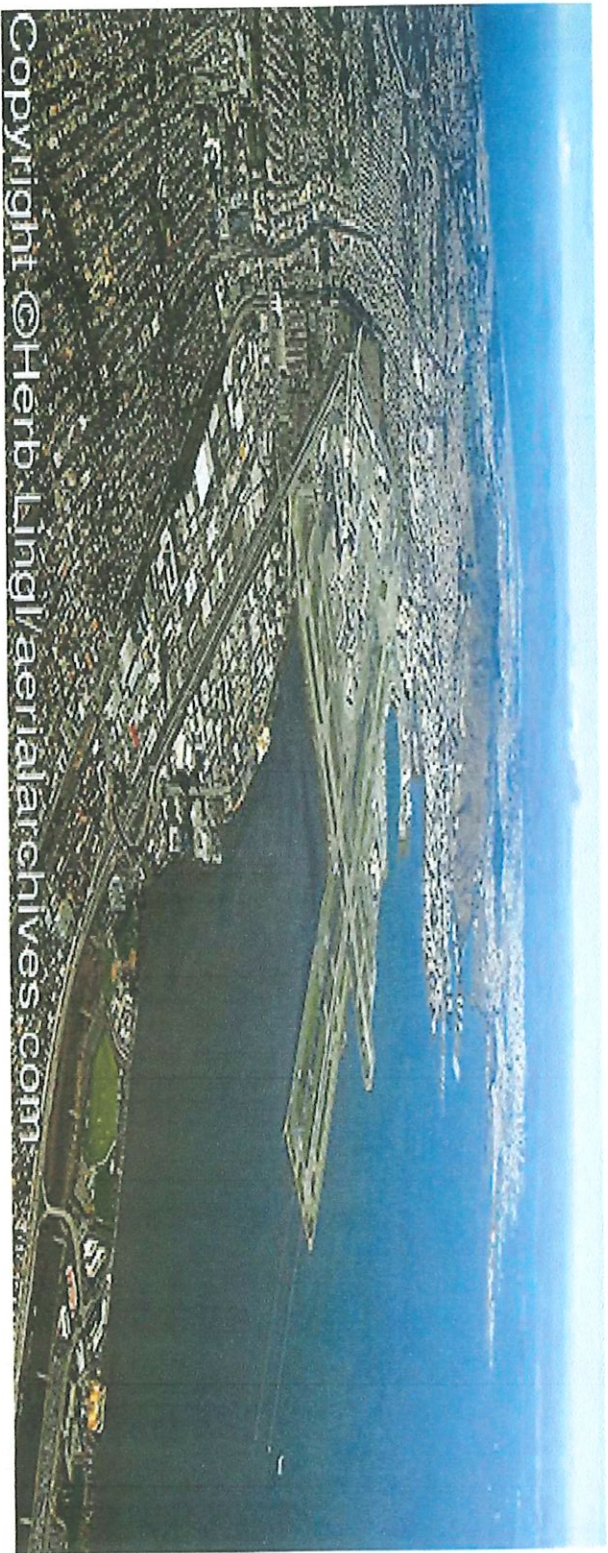
- **Alert 1** - Pilot reports minor mechanical problem, stations open apparatus doors, apparatus position on the apron and stand by.
- **Alert 2** - Pilot reports indicator lights show smoke, hydraulics, possible stuck land gear or flaps problem. Units stage at pre-designated locations on AOA.
- **Alert 3** - Pilot indicates engine fire/ failure, smoke/fire on board, navigational failure. Heaving landing is imminent. Units state at pre-designated locations. 101 (SFFD) & 303 (SMC) response is struck

*New underground hydrant system will expedite the refilling of apparatus without returning to the station to refill*

- *System will be underground and will not impede runway operations.*
- *Under ground hydrants will be located strategically at Taxiways Charlie, Foxtrot and Lima.*



*The vast majority of flight departures and arrivals will operate over bay waters. ARFF responders must be prepared for a marine disaster response*



Copyright ©Herb Lingl/aerialarchives.com

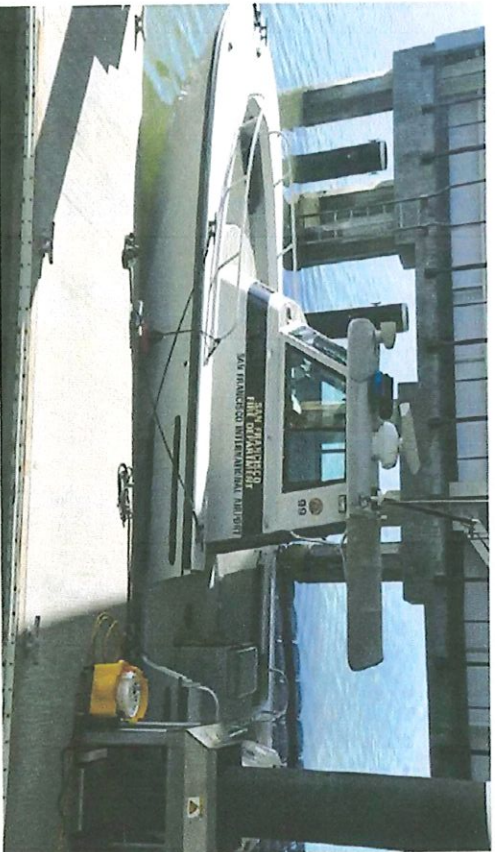
**\*MERF\***

***Marine Emergency Response Facility***



*Airport Division Marine Apparatus*

**Boston Whaler  
Rescue 99**

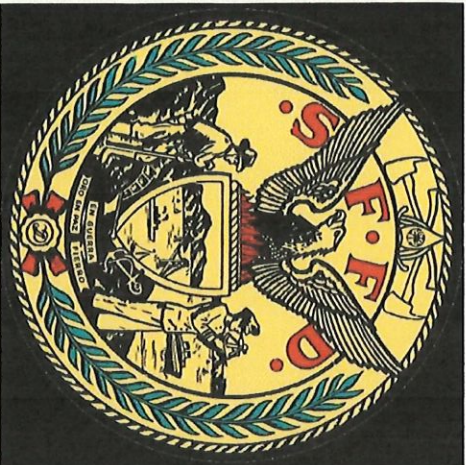


**Moose Boat  
Rescue 55**



*SFO marine resources*  
*PWC, Air boat, Zodiac fast boat*





## **Bike Medic Program**

**Staffed daily 10am -10pm**

**Since April 7, 2018**

**April -145 Calls**

**May- 169 Calls**





January 24, 2017





