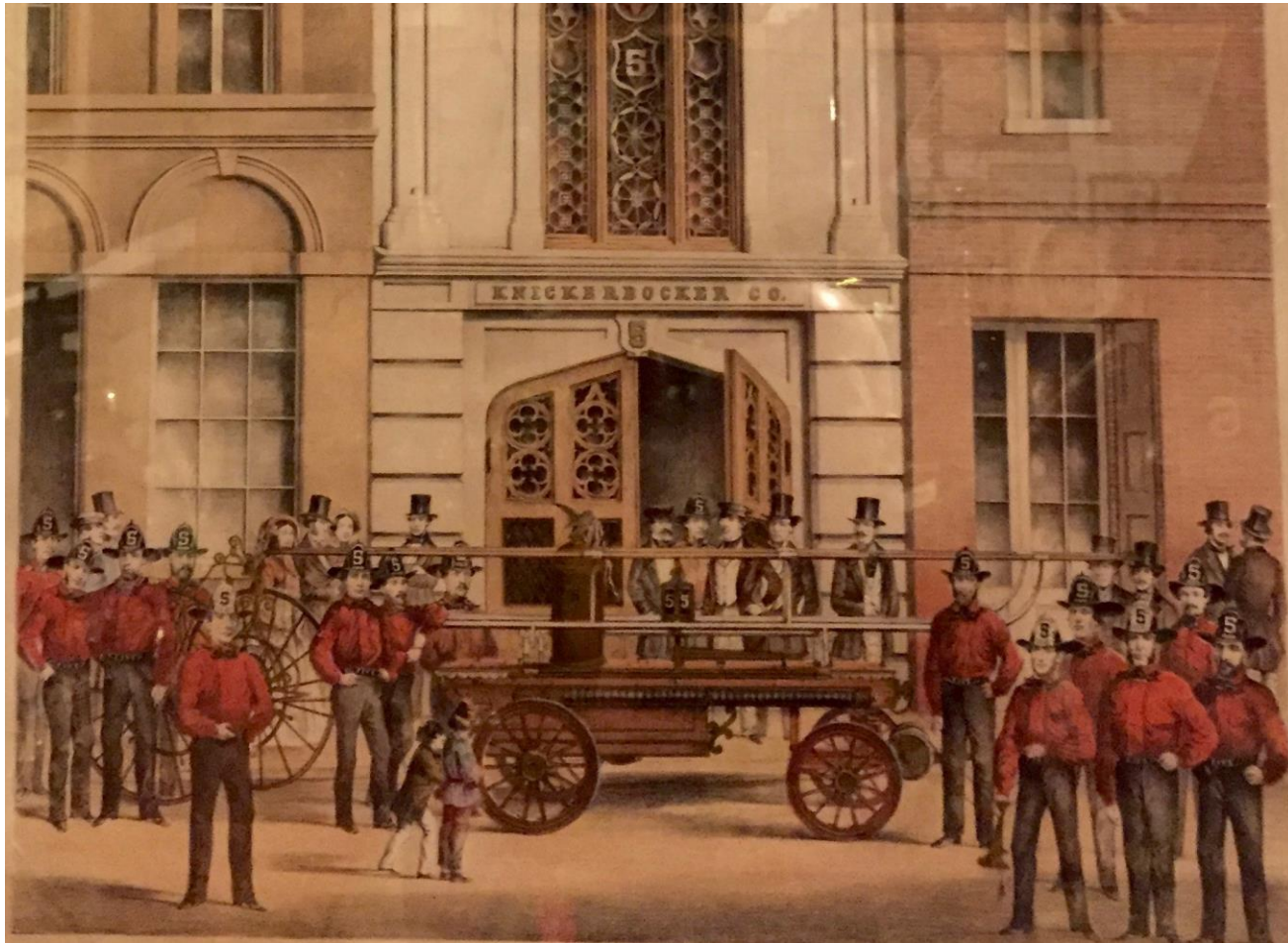


SAN FRANCISCO

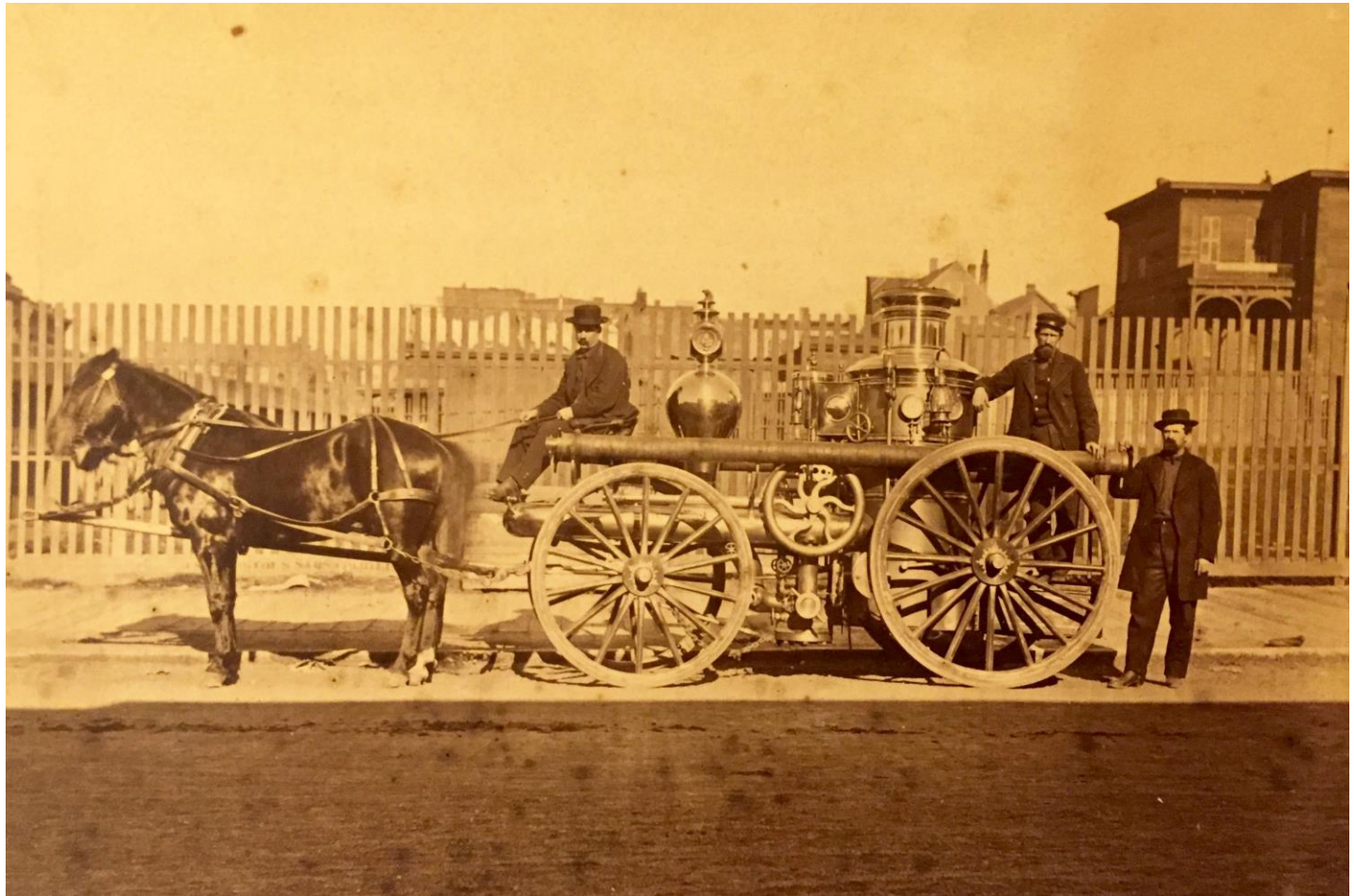


FIRE DEPARTMENT

End of the Volunteer Era?



Era of Steam Replaces the Era of Muscle



Chief F.E.R. Whitney and Chief David Scannell



The Exempt Fire Company



Disaster Strikes





Copyright 1911
by W. H. Gordon

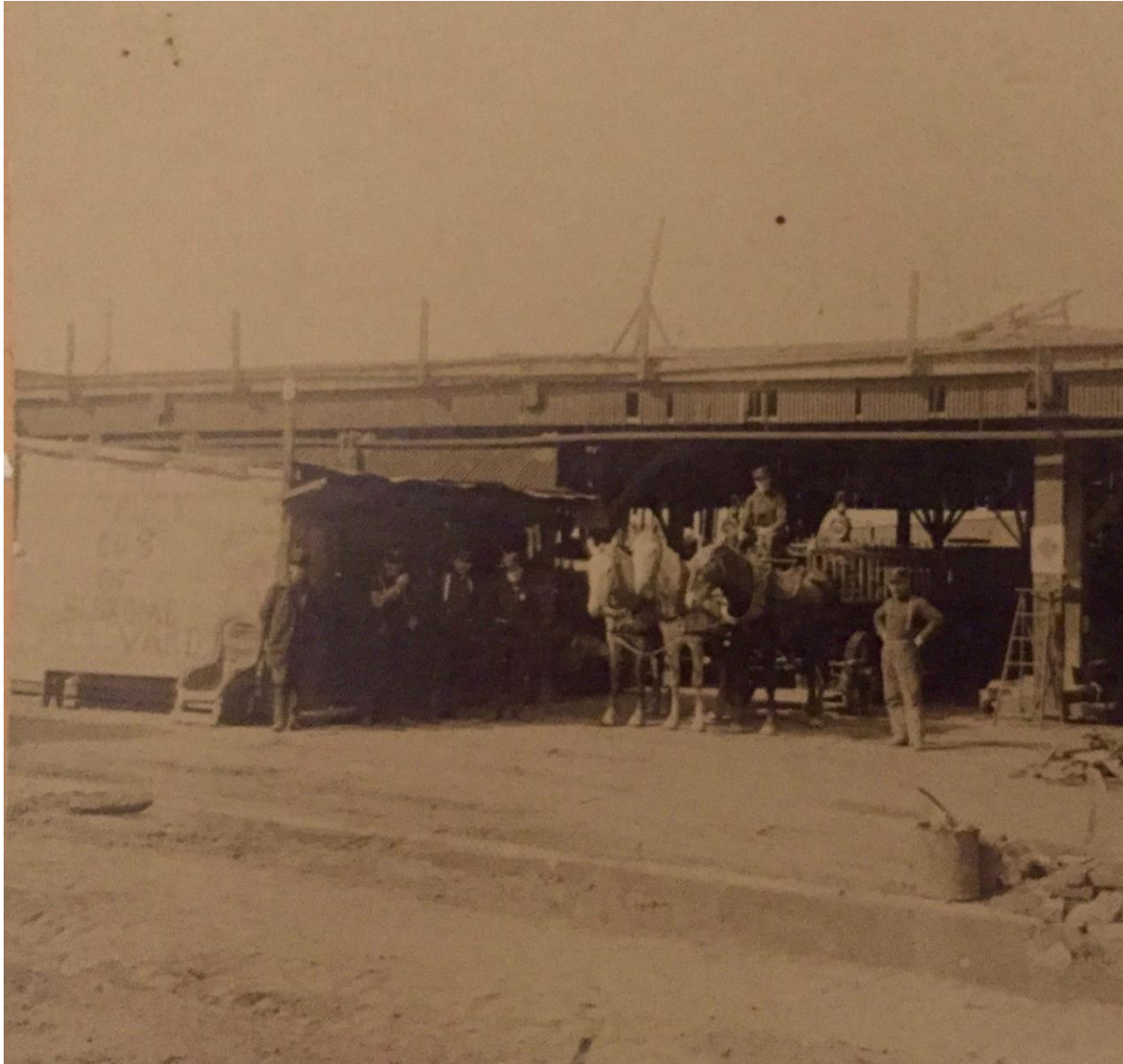
CALIFORNIA ST. NEAR SANSONE

Engine Crushed by a falling wall

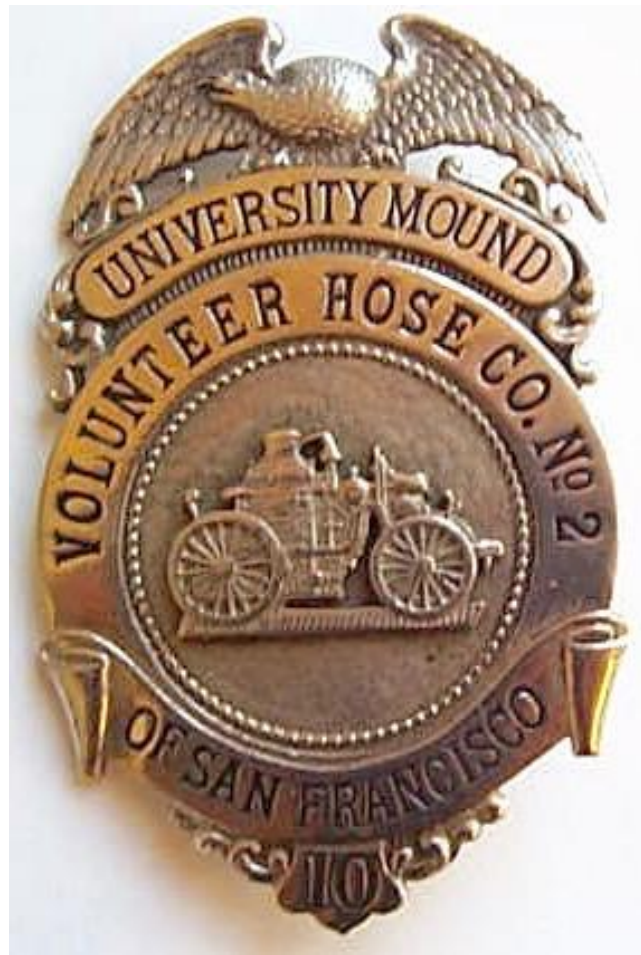


1906 A fire engine caught and crushed by a falling wall, Post St.,
San Francisco Disaster, U. S. A. Copyright 1906 by H. G. White Co.

Temporary Quarters of Truck 9: A Tent



Volunteers fill the gap in coverage
created by the earthquake



Knowing it could be days before they received help
in this remote part of town the residents of Glen
Park form a fire company



The motorized era and growth of the department.



Memorial to Volunteer Fire Department in Washington Square Park



Fire Auxiliaries: Soldiers of the home front.



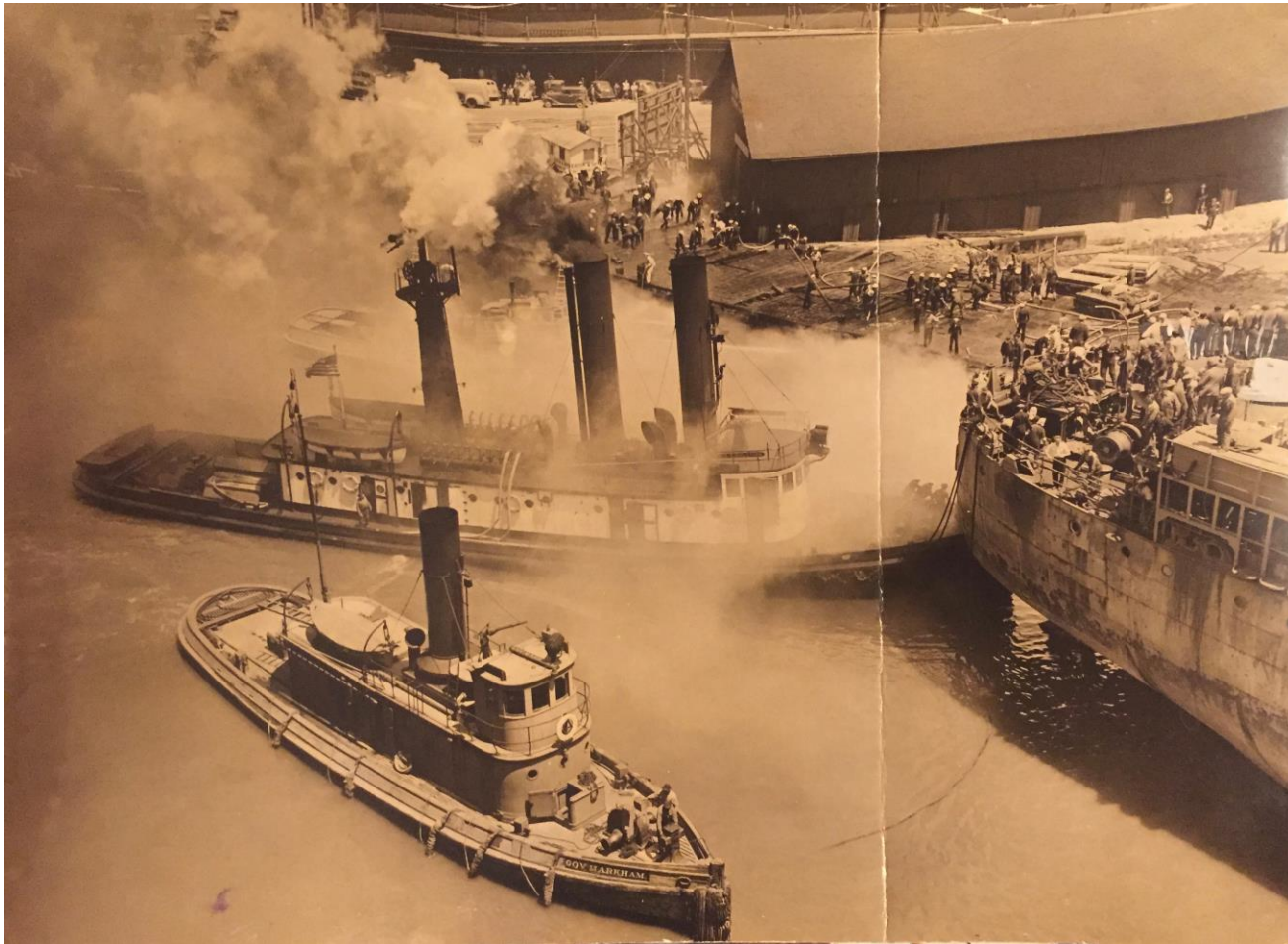
Using what we learned from the blitz.



Stirrup Pumps: Keeping small fires from becoming conflagrations



United Fruit Co. 6/23/1943



10,000 Trained Emergency Workers

Firefighter



First Aid Trained



4th and Harrison, September 1943



320 6th Ave, February 1943



Quartermaster Corps Warehouse, 5th and Channel, April 1944



The Fire Auxiliaries were the parents of two Emergency Responder Traditions



The start of the Civilian Defense Era 1951



1980s



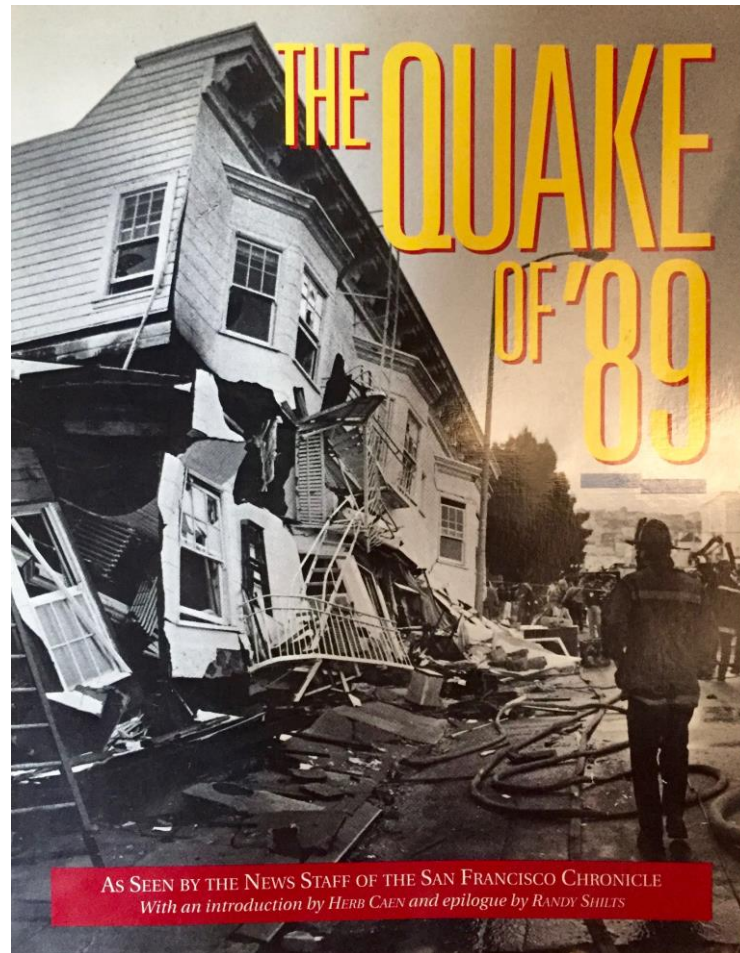
Fire Reserves look to the SFFD as their model for training, organization and discipline



Fire Reserve Engine

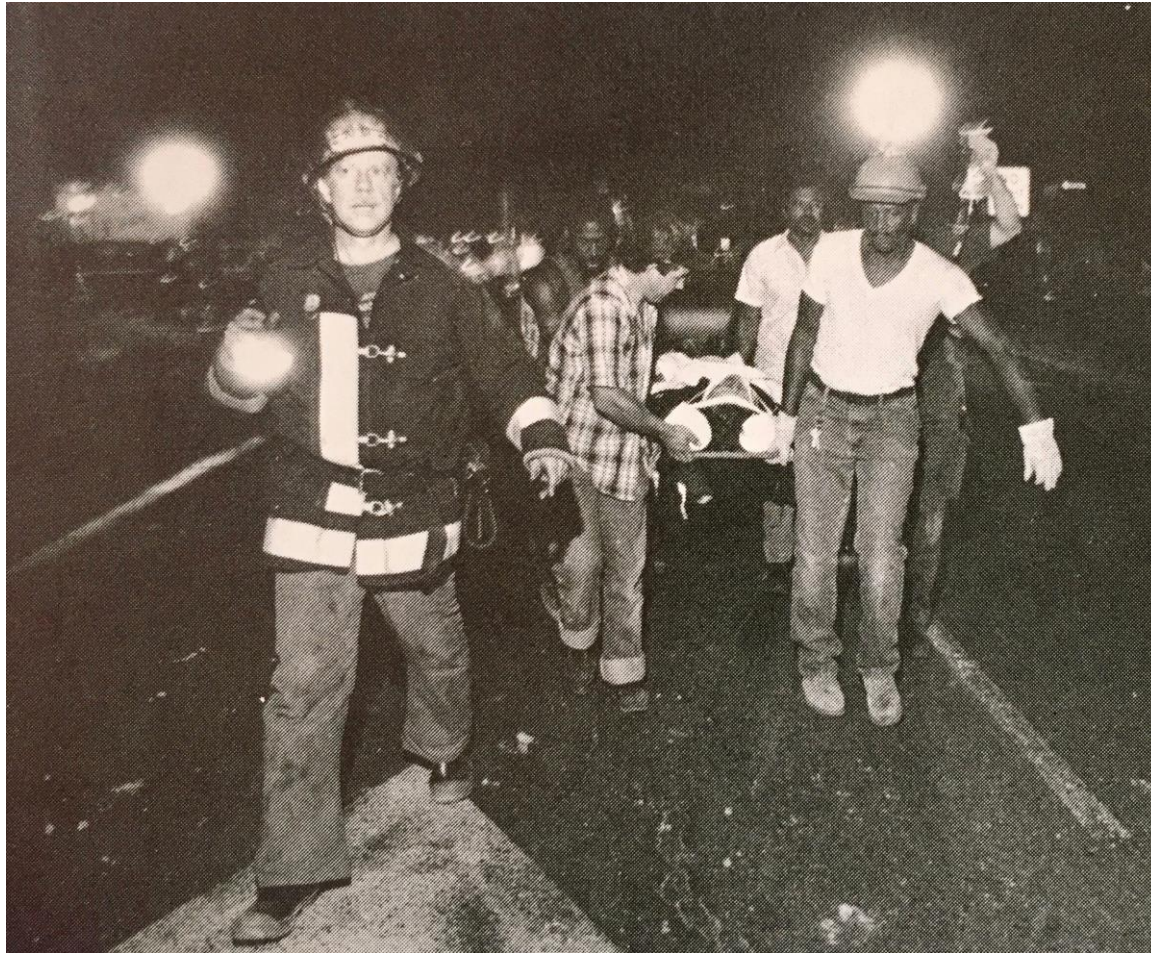


Loma Prieta



AS SEEN BY THE NEWS STAFF OF THE SAN FRANCISCO CHRONICLE
With an introduction by HERB CAEN and epilogue by RANDY SHILTS

Spontaneous Volunteers



Although trained and supervised by SFFD, NERT is more community based



Thank you,

Michael McDowell
Fire Department Historian



Reserve Captain McDowell on
the
Cypress Structure
Loma Prieta Earthquake