

# SAN FRANCISCO FIRE DEPARTMENT

Portable Water Supply System

PWSS

# Water Supply Systems

- ▣ Low Pressure – Domestic
- ▣ High Pressure Auxiliary Water Supply System
- ▣ Emergency Water Supplies

# LOW PRESSURE

- Supplied by Transmission Mains from the Peninsula Water Supply System
- 4 “Terminal” Reservoirs
  - Sunset- 177m gal
  - University Mound-141m gal
  - College Hill-13.5m gal
  - Merced Manor-9.5m gal
- Approx. 9,400 Low Pressure Hydrants



# HIGH PRESSURE AUXILIARY WATER SUPPLY SYSTEM AWSS

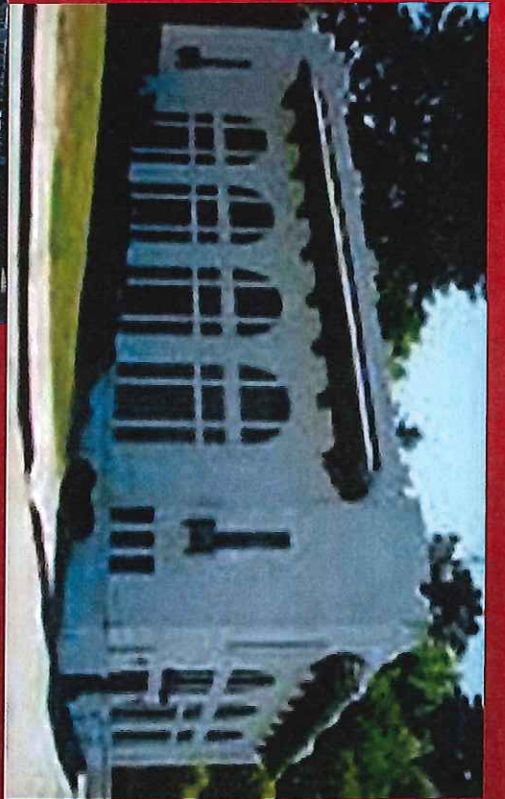
- Built after the 1906 Earthquake
- \$5.2m Dollars



# AWSSS

- Twin Peaks Reservoir - 10.5m gal, 758' el
- Ashbury Tank - 500k gal, 494' el
- Jones Street Tank - 750k gal, 369' el





# EMERGENCY WATER SUPPLIES

- Pools
- Reservoirs
- Tanks
- Cisterns
- Bay



# PWSS

- Recreate a grid High-Pressure water system above ground
- System is capable of moving water for long distances
- Portable
- Potable drinking water

CONIA PUEBLO 1989 \* FORMER  
NABUND HILLS 1991 / EXHIBIT ON ALTIMA '00 YEARS



# PWSSS

Portable Water Supply System



# PWSSS

## Key Components

Portable Hydrants



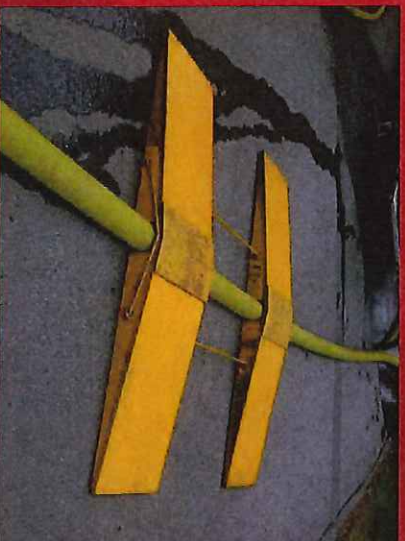
Gleason Valves



Gated Wyes

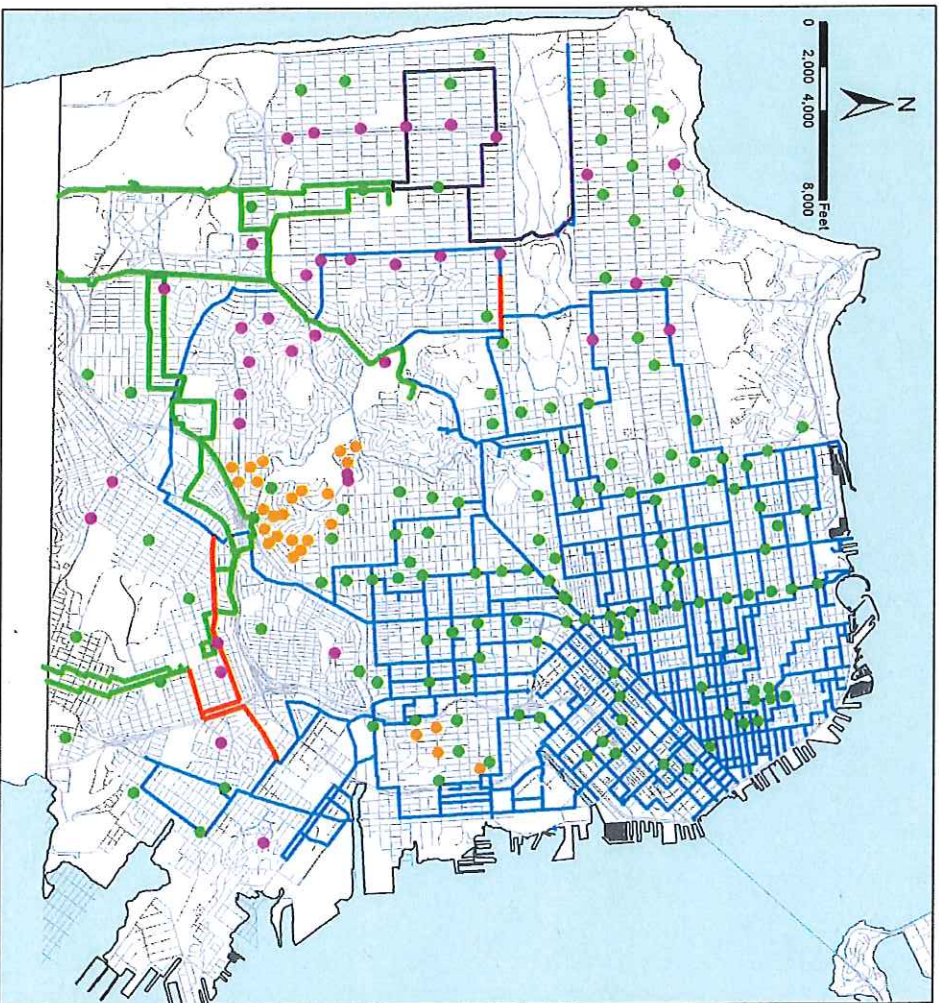
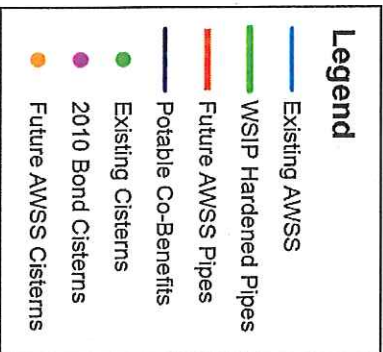


5 Inch Hose Hose Ramps





# Existing AWSS, Current Projects, and Recommended Future Projects



AECOM/AGS CS-199 AWSS  
Facilities Preliminary Options  
Study

# QUESTIONS